

AWA-PTP
**2022 WAGYU
SEMEN TENDER**

BIDDING OPENS 1 JULY at 8am
CLOSING 8 JULY at 5pm (AEST)

A COLLECTION OF
NEXT-GENERATION
WAGYU GENETICS

RARE and **HIGH-PERFORMANCE** genetics
SEMEN PACKAGES from **36 PTP sires**





While care has been taken to ensure that information contained in the AWA-PTP Semen Sale catalogue is true and correct at the time of publication, changes in circumstances after the time of publication may impact on the accuracy of this information.

Whilst great care has been taken to list all locations where semen may be exported, the AWA will take no responsibility for the accuracy of information provided to them by other parties for the purpose of compiling this catalogue.

Buyers should be aware that the AWA takes no responsibility for any semen marked Australia only regarding the conditions under which the semen has been collected and stored, animal health treatments or tests conducted prior to the AWA acquiring the semen for the purpose of the AWA-Progeny Test Program.

Buyers of semen are encouraged to undertake their own due diligence with respect to the purchasing of the semen prior to submitting their tender.

CONTENTS

04	CEO welcome
05	How to bid
05	Data driven genetic gains in Wagyu
06	Lot summary information
07	EBV lot summary
12	Cohort 2 - 2022 (Lots 1-19)
31	Cohort 1 - 2021 (Lots 20-36)
48	Percentile bands for 2020 born calves
49	Important notice
50	Wagyu BREEDPLAN EBVs
52	Wagyu genetic conditions

Wagyu Worlds Luxury Beef

All proceeds from the AWA-PTP semen sale are used to fund recording, testing and measurement of traits withing the AWA Progeny Test Program. No funds from the AWA-PTP semen sale are distributed to owners of the sires.

All AWA members are able to nominate sires for the AWA-PTP under the same standard conditions of entry.





AN IMPRESSIVE COLLECTION OF THE FINEST NEXT GENERATION WAGYU GENETICS

The **2022 AWA-PTP Semen Sale** is the second of the 2021-2031 AWA Progeny Test Program. Participating in the Semen Sale will enable you to secure semen lots that will link your herd to the core genetic improvement program that will drive the future of the global Wagyu sector. In turn, it will increase the linkage of your herd to the AWA-PTP genetic nucleus and allow you to benchmark your herd against the AWA-PTP, including increasing the accuracy of EBVs for your progeny and females in your herd.

On offer will be semen from 19 sires entered into COHORT 2 of the program and 16 sires from COHORT 1. These sires are at the forefront of Wagyu breeding, with many in the top 1% BREEDPLAN EBVs for key traits and the top 1% for Breed \$Indexes.

The sale will be held by tender on AuctionsPlus opening on 1 July 2022 at 8 am and closing at 5 pm on 8 July 2022 (AEST).

The Australian Wagyu Sector is going from strength to strength in terms of the rate of genetic progress for core profitability traits and increases in EBV accuracy. The AWA welcomes participants from around the world to share this unique opportunity to secure the finest of the next-generation Wagyu genetics available outside Japan.

We wish all buyers well with this opportunity to purchase some of the world's best Wagyu genetics linking your herd to the core global reference population for Japanese Black cattle.

Kind regards,

Dr Matt McDonagh
Chief Executive Officer
Australian Wagyu Association

Tender information

HOW TO BID?

The AWA-PTP Semen Sale is being conducted by the Australian Wagyu Association in conjunction with selling agents Grant Daniel & Long Pty Ltd as a confidential tender process through the AuctionsPlus selling platform.

Limited semen straws are available for each sire and the tender will be awarded to the most competitive bid.

KEY DATES

TENDERS OPEN 8am (AEST) Friday 1 July 2022

TENDERS CLOSE 5pm (AEST) Friday 8 July 2022

INTERNATIONAL BUYERS

Several lots have semen available for export to different countries across the globe.

Please ensure the semen you are wishing to tender for is exportable to your country before submitting your bid.

All prospective international purchases must contact Harvey at GDL to pre-register and receive trading approval.

TERMS AND CONDITIONS

The tender is to be conducted under AuctionsPlus User Agreement and Sale Terms. View these terms and the additional terms applicable to the conduct of the tender.



MORE INFORMATION

SELLING AGENT

Harvey Weyman-Jones

phone 0414 941 788

email harvey.veymanjones@gdlrural.com.au



web www.gdlrural.com.au

TENDER PLATFORM

AuctionsPlus

phone 02 9262 4222

email info@auctionsplus.com.au

You must be registered with AuctionsPlus as a buyer to participate in this sale.



web www.auctionsplus.com.au

LOT SUMMARY INFORMATION

COHORT 2 - 2022

LOTS 1 - 19 (pages 12-30) are sires nominated to participate in Cohort 2 of the AWA Progeny Test Program (PTP).

Lots 1 - 19 represent sires with a diverse range of EBVs and verified pedigrees. These sires will be further proven through the AWA-PTP, allowing buyers access to leading next-generation Sires. Joinings for COHORT 2 sires will commence in October 2022, with data collection on calves to commence in July 2023.

By securing and using COHORT 2 semen sires in the 2022 joining season within your production system, you will create a direct link between your herd the animals in the AWA-PTP, increasing EBV accuracy within your Wagyu herd.

LIMITED UNITS ARE AVAILABLE ten packages of 10 straws are available for each sire. The tender will be awarded to the most competitive bid.

COHORT 1 - 2021

LOTS 20 - 36 (pages 31-47) are sires accepted in 2021 to participate in Cohort 1 of the AWA Progeny Test Program (PTP).

Joinings for Cohort 1 are complete, and the calving of Cohort 1 Progeny is expected to commence in early July 2022. Subsequently, these 2021 sires will be the first of the PTP to receive high-accuracy EBVs through the data collection of key fertility, growth, and carcass traits on their progeny.

Buyers should consider this a unique opportunity to secure genetics from some of the first sires included in the AWA-PTP, linking your herd to the global Japanese Black Wagyu reference population.

LIMITED UNITS ARE AVAILABLE a maximum of four packages of 10 straws available for each sire. The tender will be awarded to the most competitive bid.

EBV LOT SUMMARY

SEE PAGES 12 to 19 for full lot listing

TOP 1% within a trait / index

TOP 5% within a trait / index

MACQUARIE WAGYU M0554

SIRE OWNER MACQUARIE WAGYU

LOT 1 COHORT 2	GL	BW	200	400	600	MCW	MILK	CWt	EMA	RUMP	RBY	MS	MF	WBI	SRI	FTI	F1I
	-0.5	-0.6	-1	-2	-3	7	-2	-1	7.1	-4.7	1.7	2.4	0.37	184	205	173	176
	79%	76%	84%	85%	82%	71%	68%	75%	66%	67%	62%	68%	63%	JULY 2022 WAGYU GROUP BREEDPLAN			

MACQUARIE WAGYU P0006

SIRE OWNER MACQUARIE WAGYU

LOT 2 COHORT 2	GL	BW	200	400	600	MCW	MILK	CWt	EMA	RUMP	RBY	MS	MF	WBI	SRI	FTI	F1I
	-1.8	1.5	18	33	46	37	2	29	-1.1	-5.9	1.5	1.1	0.12	171	147	129	100
	68%	77%	78%	75%	75%	66%	67%	71%	64%	65%	58%	67%	59%	JULY 2022 WAGYU GROUP BREEDPLAN			

LENDARLOU HLKFS009

SIRE OWNER LEONARD & DARREN HENSCHALL

LOT 3 COHORT 2	GL	BW	200	400	600	MCW	MILK	CWt	EMA	RUMP	RBY	MS	MF	WBI	SRI	FTI	F1I
	-1.3	1.3	14	18	32	29	1	36	5.1	-1.5	1.1	1.9	0.34	229	230	185	168
	61%	69%	70%	69%	68%	58%	58%	64%	58%	60%	53%	59%	53%	JULY 2022 WAGYU GROUP BREEDPLAN			

LMR YUKI 9273G

SIRE OWNER LONE MOUNTAIN CATTLE CO

LOT 4 COHORT 2	GL	BW	200	400	600	MCW	MILK	CWt	EMA	RUMP	RBY	MS	MF	WBI	SRI	FTI	F1I
	-1.1	-1	-2	-6	-6	-8	-3	5	1.8	0.8	-1.3	2.9	0.39	149	190	198	208
	62%	70%	71%	71%	71%	63%	65%	69%	66%	61%	59%	64%	62%	JULY 2022 WAGYU GROUP BREEDPLAN			

LMR ITOSHIGENAMI 0397H

SIRE OWNER LONE MOUNTAIN CATTLE CO

LOT 5 COHORT 2	GL	BW	200	400	600	MCW	MILK	CWt	EMA	RUMP	RBY	MS	MF	WBI	SRI	FTI	F1I
	2.2	-3.1	-11	-19	-30	-28	-4	-12	6	1.6	-0.6	3	0.4	132	188	198	221
	64%	70%	71%	70%	71%	65%	66%	70%	66%	64%	61%	66%	64%	JULY 2022 WAGYU GROUP BREEDPLAN			

M6 RANCH ITOSHIGENAMI R0122H

SIRE OWNER LANDGRAF RANCH

LOT 6 COHORT 2	GL	BW	200	400	600	MCW	MILK	CWt	EMA	RUMP	RBY	MS	MF	WBI	SRI	FTI	F1I
	-0.5	5.2	32	51	74	69	3	67	4.4	-1.8	0.9	2.4	0.35	348	326	277	233
	60%	68%	68%	67%	67%	57%	57%	63%	55%	55%	46%	57%	49%	JULY 2022 WAGYU GROUP BREEDPLAN			

M6 RANCH ITOSHIGENAMI R073H

SIRE OWNER M6 CATTLE CO

LOT 7 COHORT 2	GL	BW	200	400	600	MCW	MILK	CWt	EMA	RUMP	RBY	MS	MF	WBI	SRI	FTI	F1I
	0.2	6.2	33	54	80	74	4	61	2.3	0	0.1	2.3	0.35	339	312	266	219
	59%	67%	67%	66%	66%	56%	57%	62%	54%	55%	47%	56%	50%	JULY 2022 WAGYU GROUP BREEDPLAN			

MOONDARRA KUMANAMI 051

SIRE OWNER ARUBIAL PTY LTD

LOT 8 COHORT 2	GL	BW	200	400	600	MCW	MILK	CWt	EMA	RUMP	RBY	MS	MF	WBI	SRI	FTI	F1I
	-1.3	-0.7	1	-5	-8	-6	-8	-17	8.5	-4.4	2.2	1.6	0.15	173	202	137	141
	63%	72%	74%	73%	73%	64%	65%	69%	62%	64%	55%	65%	59%	JULY 2022 WAGYU GROUP BREEDPLAN			

EBV LOT SUMMARY

SEE PAGES 20 to 27 for full lot listing

TOP 1% within a trait / index

TOP 5% within a trait / index

MOYHU SHIKIYASU 2

SIRE OWNER WAGYU GENETICS VICTORIA PTY LTD

LOT 9 COHORT 2	GL	BW	200	400	600	MCW	MILK	CWt	EMA	RUMP	RBY	MS	MF	WBI	SRI	FTI	F1I
	0.9	1.5	3	5	5	15	-6	0	3.9	-5.1	1.4	1.6	0.25	136	145	109	105
	62%	75%	72%	71%	71%	65%	64%	68%	62%	63%	57%	64%	59%	JULY 2022 WAGYU GROUP BREEDPLAN			

OLIVE GROVE WAGYU R18

SIRE OWNER AOA QLD PTY LTD

LOT 10 COHORT 2	GL	BW	200	400	600	MCW	MILK	CWt	EMA	RUMP	RBY	MS	MF	WBI	SRI	FTI	F1I
	-0.9	4.5	23	39	46	59	-5	43	1.4	-3.4	0.2	2.3	0.46	280	277	225	198
	59%	69%	71%	70%	70%	60%	61%	66%	58%	60%	51%	61%	52%	JULY 2022 WAGYU GROUP BREEDPLAN			

WITHDRAWN

LOT 11 COHORT 2	GL	BW	200	400	600	MCW	MILK	CWt	EMA	RUMP	RBY	MS	MF	WBI	SRI	FTI	F1I
														JULY 2022 WAGYU GROUP BREEDPLAN			

LOT 11
WITHDRAWN
FROM SALE

SUNNYSIDE R0009

SIRE OWNER RN KRAUSE & CO

LOT 12 COHORT 2	GL	BW	200	400	600	MCW	MILK	CWt	EMA	RUMP	RBY	MS	MF	WBI	SRI	FTI	F1I
	-2.8	-0.5	13	23	32	24	2	41	6.9	-2.8	1.4	2.7	0.41	290	304	277	260
	64%	71%	74%	73%	73%	63%	66%	71%	65%	65%	56%	68%	57%	JULY 2022 WAGYU GROUP BREEDPLAN			

WITHDRAWN

LOT 13 WITHDRAWN	GL	BW	200	400	600	MCW	MILK	CWt	EMA	RUMP	RBY	MS	MF	WBI	SRI	FTI	F1I
														JULY 2022 WAGYU GROUP BREEDPLAN			

LOT 13
WITHDRAWN
FROM SALE

Q WAGYU FUJI

SIRE OWNER QUEENSLAND WAGYU

LOT 14 COHORT 2	GL	BW	200	400	600	MCW	MILK	CWt	EMA	RUMP	RBY	MS	MF	WBI	SRI	FTI	F1I
	0.7	0.2	6	13	15	22	-6	14	1.2	-1	-0.1	1.7	0.36	176	191	157	151
	59%	69%	69%	68%	68%	59%	58%	64%	57%	58%	50%	60%	53%	JULY 2022 WAGYU GROUP BREEDPLAN			

RANGER R459H

SIRE OWNER BRENNER CATTLE COMPANY

LOT 15 COHORT 2	GL	BW	200	400	600	MCW	MILK	CWt	EMA	RUMP	RBY	MS	MF	WBI	SRI	FTI	F1I
	0.1	0.6	11	23	30	27	6	38	8.6	-0.4	1.6	2.3	0.39	255	255	242	224
	64%	71%	71%	70%	70%	61%	62%	67%	60%	60%	52%	62%	56%	JULY 2022 WAGYU GROUP BREEDPLAN			

COOCHIN MICHIFUKU 086

SIRE OWNER TRENT BRIDGE WAGYU STUD

LOT 16 COHORT 2	GL	BW	200	400	600	MCW	MILK	CWt	EMA	RUMP	RBY	MS	MF	WBI	SRI	FTI	F1I
	0	4.1	31	41	54	62	-4	41	0	-1.4	-0.2	2.2	0.41	302	297	237	207
	81%	74%	87%	78%	77%	64%	60%	69%	55%	56%	47%	56%	48%	JULY 2022 WAGYU GROUP BREEDPLAN			

EBV LOT SUMMARY

SEE PAGES 28 to 35 for full lot listing

TOP 1% within a trait / index

TOP 5% within a trait / index

HAMILTON PARK WAGYU 0057

SIRE OWNER HAMILTON PARK PASTORAL COMPANY

LOT 17 COHORT 2	GL	BW	200	400	600	MCW	MILK	CWt	EMA	RUMP	RBY	MS	MF	WBI	SRI	FTI	F1I
	1.6	2.5	24	34	41	36	-2	50	4	-1.9	0.7	2.5	0.43	297	254	230	292
	64%	69%	72%	67%	71%	61%	64%	69%	63%	63%	54%	66%	55%	JULY 2022 WAGYU GROUP BREEDPLAN			

STARTZ TORUKU

SIRE OWNER STARTZ CATTLE CO

LOT 18 COHORT 2	GL	BW	200	400	600	MCW	MILK	CWt	EMA	RUMP	RBY	MS	MF	WBI	SRI	FTI	F1I
	-0.2	0.9	11	20	23	29	-3	28	3.4	-3.2	1.5	1.2	0.21	180	178	132	118
	51%	63%	65%	64%	64%	54%	55%	60%	52%	53%	45%	54%	47%	JULY 2022 WAGYU GROUP BREEDPLAN			

SUNLAND YOI REI R35

SIRE OWNER SUNLAND CATTLE COMPANY PTY LTD

LOT 19 COHORT 2	GL	BW	200	400	600	MCW	MILK	CWt	EMA	RUMP	RBY	MS	MF	WBI	SRI	FTI	F1I
	1.6	-3.8	-9	-19	-32	-39	1	-20	7.2	3.7	-0.7	2.4	0.37	114	168	190	214
	61%	68%	70%	69%	69%	62%	64%	67%	63%	63%	57%	64%	60%	JULY 2022 WAGYU GROUP BREEDPLAN			

MAYURA LIMESTONE L0081

SIRE OWNER MAYURA PTY LTD

LOT 20 COHORT 1	GL	BW	200	400	600	MCW	MILK	CWt	EMA	RUMP	RBY	MS	MF	WBI	SRI	FTI	F1I
	-0.5	0.8	6	10	20	16	0	32	4.1	1.8	-0.1	1.9	0.39	178	188	167	158
	66%	91%	86%	86%	85%	72%	65%	79%	74%	73%	66%	76%	67%	JULY 2022 WAGYU GROUP BREEDPLAN			

MAYURA Q2140

SIRE OWNER WRIGHT PASTORAL NSW P/L

LOT 21 COHORT 1	GL	BW	200	400	600	MCW	MILK	CWt	EMA	RUMP	RBY	MS	MF	WBI	SRI	FTI	F1I
	-1.7	-0.5	9	13	12	2	2	14	6.9	1.5	0.9	1.3	0.07	184	196	180	174
	64%	71%	73%	72%	72%	65%	66%	69%	65%	65%	57%	66%	59%	JULY 2022 WAGYU GROUP BREEDPLAN			

TYDDEWI N3709

SIRE OWNER GRASSLAND WAGYU

LOT 22 COHORT 1	GL	BW	200	400	600	MCW	MILK	CWt	EMA	RUMP	RBY	MS	MF	WBI	SRI	FTI	F1I
	-0.5	0.6	13	13	25	22	3	20	1.3	-0.3	-0.2	2.2	0.32	186	189	174	163
	66%	80%	76%	75%	75%	67%	65%	71%	65%	66%	58%	66%	60%	JULY 2022 WAGYU GROUP BREEDPLAN			

HAMILTON PARK WAGYU SHIG TANI 0031

SIRE OWNER HAMILTON PARK PASTORAL COMPANY

LOT 23 COHORT 1	GL	BW	200	400	600	MCW	MILK	CWt	EMA	RUMP	RBY	MS	MF	WBI	SRI	FTI	F1I
	-1.8	-0.6	9	14	14	6	4	6	5.2	0	0.7	2	0.23	207	220	203	198
	63%	71%	72%	71%	71%	64%	65%	68%	63%	63%	56%	65%	57%	JULY 2022 WAGYU GROUP BREEDPLAN			

HAMILTON PARK WAGYU 0065

SIRE OWNER HAMILTON PARK PASTORAL COMPANY

LOT 24 COHORT 1	GL	BW	200	400	600	MCW	MILK	CWt	EMA	RUMP	RBY	MS	MF	WBI	SRI	FTI	F1I
	-1.4	2.5	20	37	42	51	-2	41	0.5	0.8	-0.3	1.6	0.34	253	250	205	182
	61%	72%	70%	69%	69%	61%	61%	66%	59%	61%	52%	62%	53%	JULY 2022 WAGYU GROUP BREEDPLAN			

EBV LOT SUMMARY

SEE PAGES 36 to 43 for full lot listing

TOP 1% within a trait / index

TOP 5% within a trait / index

HAMILTON PARK WAGYU MICHIFUKU 0518

SIRE OWNER HAMILTON PARK PASTORAL COMPANY

LOT 25 COHORT 1	GL	BW	200	400	600	MCW	MILK	CWt	EMA	RUMP	RBY	MS	MF	WBI	SRI	FTI	FII
	-1.2	-0.6	0	3	5	12	3	11	4.1	1	-1.1	2.5	0.42	198	231	225	228
	65%	74%	73%	72%	72%	66%	65%	69%	63%	64%	56%	65%	58%	JULY 2022 WAGYU GROUP BREEDPLAN			

IRONGATE MICHIFUKU F126 JNR M352

SIRE OWNER IRONGATE WAGYU

LOT 26 COHORT 1	GL	BW	200	400	600	MCW	MILK	CWt	EMA	RUMP	RBY	MS	MF	WBI	SRI	FTI	FII
	-3.3	0.1	12	21	20	12	7	29	3.2	0.5	0.1	2	0.36	219	230	211	203
	94%	97%	96%	96%	96%	81%	68%	82%	70%	72%	65%	70%	61%	JULY 2022 WAGYU GROUP BREEDPLAN			

IRONGATE MICHIFUKU M352 JNR P788

SIRE OWNER IRONGATE WAGYU

LOT 27 COHORT 1	GL	BW	200	400	600	MCW	MILK	CWt	EMA	RUMP	RBY	MS	MF	WBI	SRI	FTI	FII
	-1.4	-0.1	11	8	7	8	2	10	5.5	2	-0.6	2.1	0.39	220	251	226	226
	71%	88%	79%	77%	76%	66%	58%	68%	56%	57%	49%	57%	50%	JULY 2022 WAGYU GROUP BREEDPLAN			

IRONGATE MICHIFUKU P1002

SIRE OWNER IRONGATE WAGYU

LOT 28 COHORT 1	GL	BW	200	400	600	MCW	MILK	CWt	EMA	RUMP	RBY	MS	MF	WBI	SRI	FTI	FII
	2.1	2.3	14	27	37	36	-1	29	1.4	0.8	-0.5	1.8	0.33	224	225	194	175
	89%	94%	82%	81%	81%	69%	65%	72%	61%	62%	52%	64%	55%	JULY 2022 WAGYU GROUP BREEDPLAN			

STUD MR NAMI SUZUTANI 325H R325

SIRE OWNER KENTUCKY STUD WAGYU

LOT 29 COHORT 1	GL	BW	200	400	600	MCW	MILK	CWt	EMA	RUMP	RBY	MS	MF	WBI	SRI	FTI	FII
	0	0.1	2	6	1	-1	-3	0	3.7	-2	0.5	2.1	0.27	164	186	170	171
	62%	68%	70%	69%	69%	63%	64%	67%	63%	63%	58%	64%	60%	JULY 2022 WAGYU GROUP BREEDPLAN			

STUD MR NAMI SUZUTANI 327H R327

SIRE OWNER KENTUCKY STUD WAGYU

LOT 30 COHORT 1	GL	BW	200	400	600	MCW	MILK	CWt	EMA	RUMP	RBY	MS	MF	WBI	SRI	FTI	FII
	-1.2	-1.6	0	1	0	5	-5	-6	4.3	-0.8	0.6	1.2	0.16	141	161	126	128
	64%	71%	72%	71%	71%	66%	66%	69%	65%	65%	60%	66%	62%	JULY 2022 WAGYU GROUP BREEDPLAN			

MOYHU K00194

SIRE OWNER MOYHU WAGYU

LOT 31 COHORT 1	GL	BW	200	400	600	MCW	MILK	CWt	EMA	RUMP	RBY	MS	MF	WBI	SRI	FTI	FII
	3	5.7	29	43	54	53	1	38	1.6	-1.2	1	0.3	0.14	185	151	122	86
	69%	84%	79%	78%	78%	72%	71%	75%	69%	70%	65%	70%	66%	JULY 2022 WAGYU GROUP BREEDPLAN			

PUTZ WAGYU BEEF YASUFUKUSTAR

SIRE OWNER PUTZ WAGYU BEEF

LOT 32 COHORT 1	GL	BW	200	400	600	MCW	MILK	CWt	EMA	RUMP	RBY	MS	MF	WBI	SRI	FTI	FII
	0.9	2.4	18	31	39	31	3	40	4.6	-3.9	1.6	1.3	0.19	219	206	187	163
	55%	67%	70%	69%	69%	59%	60%	65%	57%	58%	50%	59%	52%	JULY 2022 WAGYU GROUP BREEDPLAN			

EBV LOT SUMMARY

SEE PAGES 44 to 47 for full lot listing

TOP 1% within a trait / index

TOP 5% within a trait / index

SHADAI FARM Q0026

SIRE OWNER AUSTRALIAN COUNTRY CHOICE PROPERTIES

LOT 33 COHORT 1	GL	BW	200	400	600	MCW	MILK	CWt	EMA	RUMP	RBY	MS	MF	WBI	SRI	FTI	FII
	-1.2	-0.5	6	16	25	30	1	23	3.7	-0.1	-0.1	2.7	0.37	264	285	251	241
	84%	74%	77%	74%	74%	66%	66%	71%	63%	65%	56%	67%	59%	JULY 2022 WAGYU GROUP BREEDPLAN			

WITHDRAWN

LOT 34 WITHDRAWN	GL	BW	200	400	600	MCW	MILK	CWt	EMA	RUMP	RBY	MS	MF	WBI	SRI	FTI	FII

LOT 34
WITHDRAWN
FROM SALE

JULY 2022 WAGYU GROUP BREEDPLAN

SYNERGY TF148 SUZUTANI 533G ET

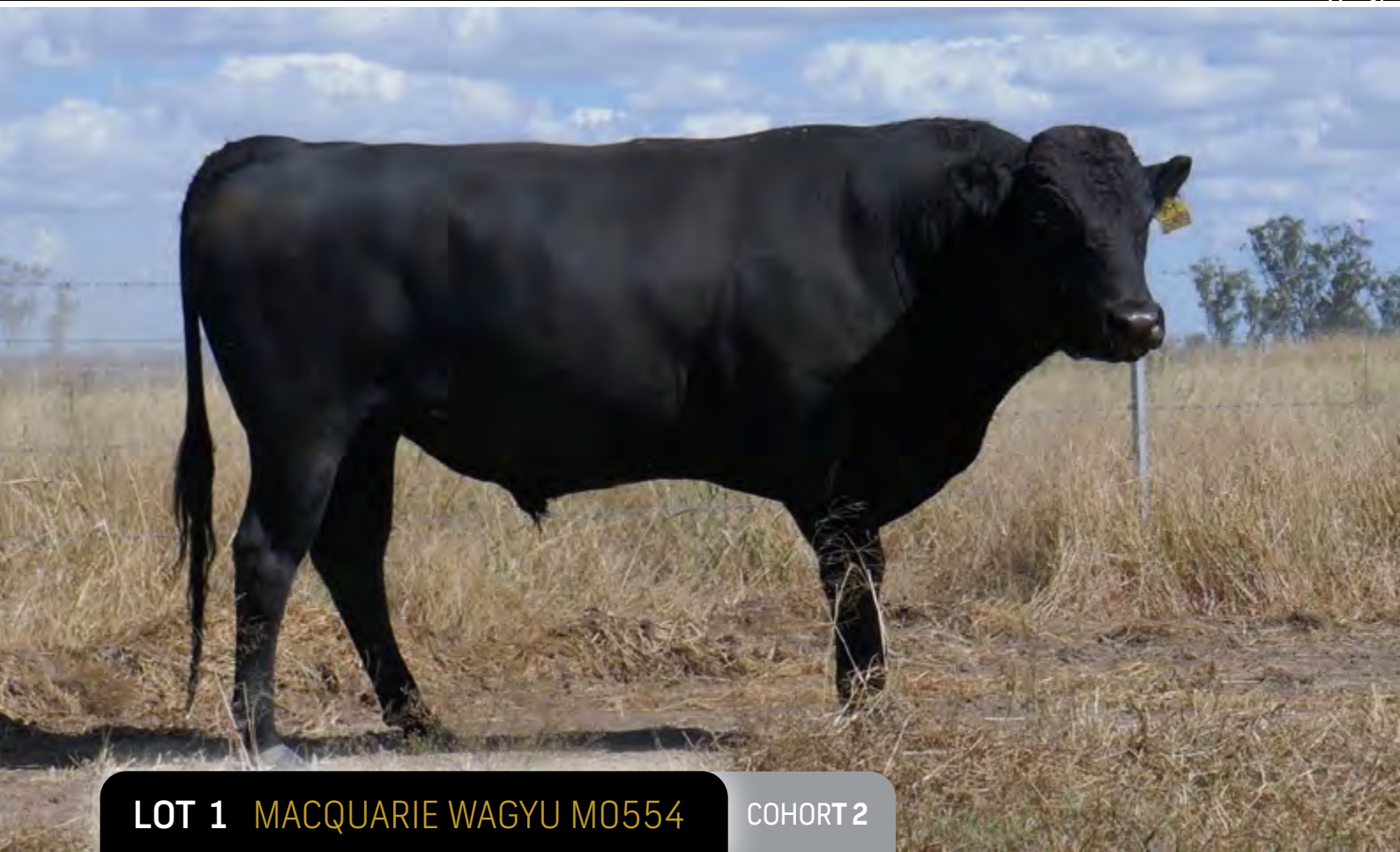
SIRE OWNER SYNERGY WAGYU L L C

LOT 35 COHORT 1	GL	BW	200	400	600	MCW	MILK	CWt	EMA	RUMP	RBY	MS	MF	WBI	SRI	FTI	FII
	0.3	-0.3	6	10	1	1	-4	6	4.7	0.1	0.3	1.8	0.33	195	222	183	184
	62%	68%	70%	69%	69%	63%	64%	67%	63%	63%	59%	64%	61%	JULY 2022 WAGYU GROUP BREEDPLAN			

SYNERGY MICH SUZUTANI 87Q

SIRE OWNER SYNERGY WAGYU L L C

LOT 36 COHORT 1	GL	BW	200	400	600	MCW	MILK	CWt	EMA	RUMP	RBY	MS	MF	WBI	SRI	FTI	FII
	0.6	-0.6	2	8	7	16	-5	5	6.5	1.7	0.1	2.2	0.37	238	272	222	222
	61%	67%	69%	68%	69%	63%	64%	66%	62%	63%	58%	63%	60%	JULY 2022 WAGYU GROUP BREEDPLAN			

**LOT 1 MACQUARIE WAGYU M0554****COHORT 2**

GL	BW	200	400	600	MCW	MILK	CWt	EMA	RUMP	RBY	MS	MF	WBI	SRI	FTI	FII
-0.5	-0.6	-1	-2	-3	7	-2	-1	7.1	-4.7	1.7	2.4	0.37	184	205	173	176
79%	76%	84%	85%	82%	71%	68%	75%	66%	67%	62%	68%	63%	JULY 2022 WAGYU GROUP BREEDPLAN			

REGO NO. BDWFM0554
DOB 5/11/16
COLOUR BLACK

SIRE OWNER MACQUARIE WAGYU
GRADE FULLBLOOD
BLOOD 100%

GENETIC CONDITIONS **B3F, CHSF, CL16F, F11F**, IARS99%
EXPORT STATUS Australia only

SIRE OWNER COMMENTS

BDWFM0554 was bred specifically because of the outstanding performance data we have seen from this joining. He has produced 16 carcasses averaging 401kg and an average of 9.6 MS. His sisters have produced 16 carcasses between them averaging 432kg and MS of 8.8. His brothers have produced 99 carcasses averaging 400kg and an average 8.4 MS. This bull will breed you high marbling, low birth weight animals with BREEDPLAN EBVs to back it up. Straws are for domestic use only.

PEDFAJ10787KIKUTERU DOI J10787

PEDFAJ1742TERUNAGADOI 1742

PEDFAJ240580TERUNAOH J240580

SIRE IMJFAJ2810KITATERUYASUDOI J2810 HONGEN (IMP JAP)

PEDFAJ472YASUTANI DOI J472

PEDFAJ601124YOSHIMI 3 601124

PEDFAJ206526YOSHIMI J206526 - KURO IKU

PEDFA10632SHIGESHIGENAMI J10632

IMUFQTF148ITOSHIGENAMI (IMP USA)

PEDFA661FUKUYUKI

DAM BDWFW0170MACQUARIE WAGYU FW170

WKSFM0139WORLD K'S HARUKI 2 (FB1614)

SUMFT0802SUMO RUKI T802

IMUFR3243TF AIZAKURA 26/2 (IMP USA)

**LOT 2 MACQUARIE WAGYU P0006****COHORT 2**

GL	BW	200	400	600	MCW	MILK	CWt	EMA	RUMP	RBV	MS	MF	WBI	SRI	FTI	FII
-1.8	1.5	18	33	46	37	2	29	-1.1	-5.9	1.5	1.1	0.12	171	147	129	100
68%	77%	78%	75%	75%	66%	67%	71%	64%	65%	58%	67%	59%	JULY 2022 WAGYU GROUP BREEDPLAN			

REGO NO. BDWFP0006
DOB 4/3/18
COLOUR BLACK

SIRE OWNER MACQUARIE WAGYU
GRADE FULLBLOOD
BLOOD 100%

GENETIC CONDITIONS B3F, CHSF, CL16F, F11F, IARSF
EXPORT STATUS Australia only

SIRE OWNER COMMENTS

P0006 is a large framed bull (weighing 980 kg) with excellent proven data on both sides of his pedigree. His sire Macquarie Wagyu BDWFY0408 is renowned as a carcase bull who also breeds both excellent sires and breeding females. His dam BDWFZ0561 is a large framed TF151/Hirashigetayasu cow who averages 496kg HCWT and MS average of 7.6 from 15 carcasses produced. She is used as a donor in our herd and her progeny are breeding on and producing excellent carcasses. Breed with confidence from this up and coming recessive free sire. Straws are for domestic use only.

PEDFAJ1742TERUNAGADOI 1742

IMJFAJ2810KITATERUYASUDOI J2810 HONGEN (IMP JAP)

PEDFAJ601124YOSHIMI 3 601124

SIRE BDWFY0408MACQUARIE WAGYU Y408

IMUFQ2599TF YUKIHARUNAMI 4 (IMP USA)

TWAFU0561TWA F U561

TWAFS0212TWA DAIRISEKI (IMP USA)

PEDFAJ1081ITOKITATSURU J1081

IMUFLT151ITZURUDOI TF151 (IMP USA)

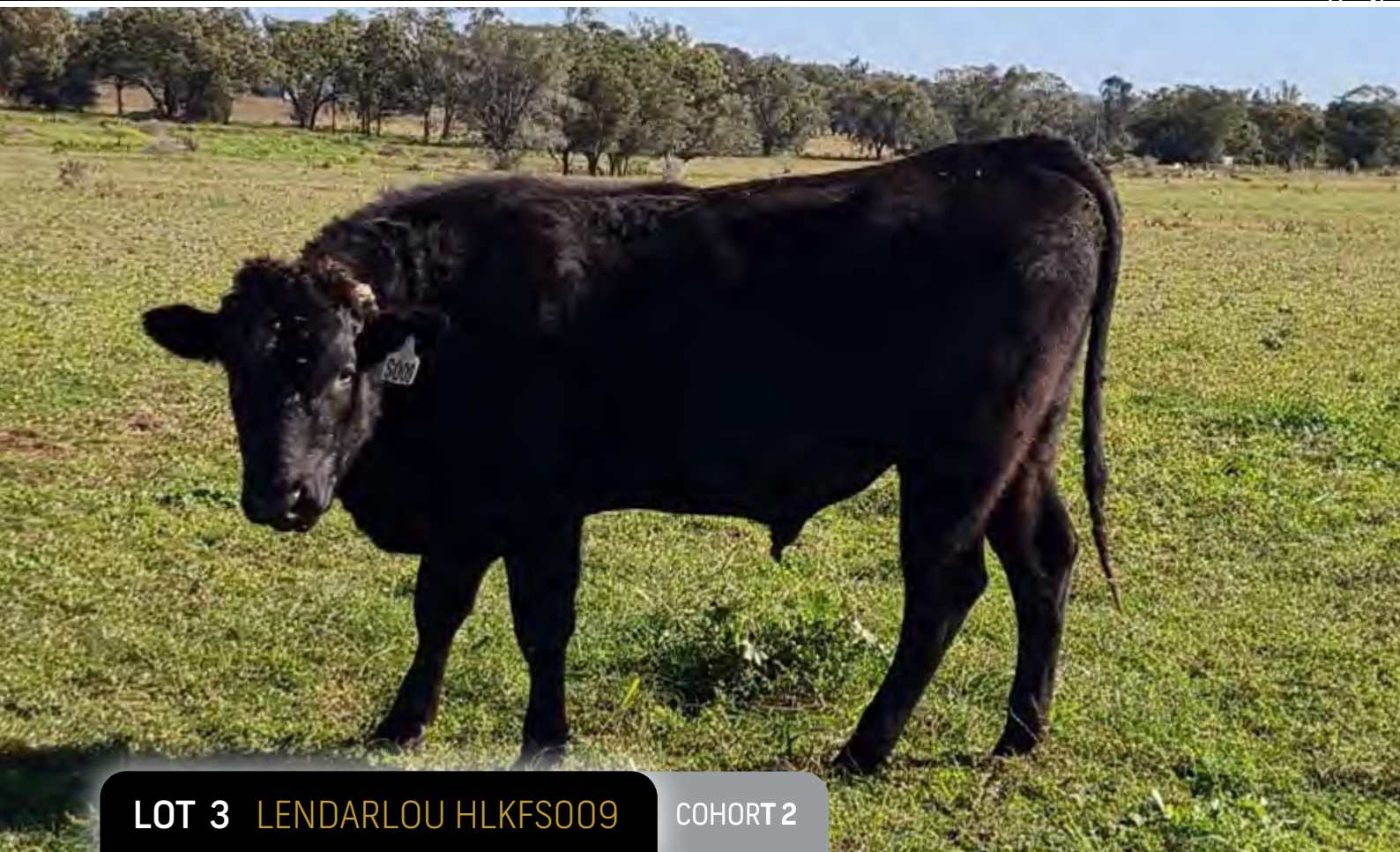
PEDFAJ433313YASUHIME J433313

DAM BDWFZ0561MACQUARIE WAGYU F Z561

IMJFAJ2351HIRASHIGETAYASU J2351 HONGEN (IMP JAP)

BDWFX0297MACQUARIE WAGYU F X297

SUMFU2027SUMO RUKI U2027

**LOT 3 LENDARLOU HLKFS009****COHORT 2**

GL	BW	200	400	600	MCW	MILK	CWt	EMA	RUMP	RBV	MS	MF	WBI	SRI	FTI	FII
-1.3	1.3	14	18	32	29	1	36	5.1	-1.5	1.1	1.9	0.34	229	230	185	168
61%	69%	70%	69%	68%	58%	58%	64%	58%	60%	53%	59%	53%	JULY 2022 WAGYU GROUP BREEDPLAN			

REGO NO. HLKFS009
DOB 29/1/21
COLOUR BLACK

SIRE OWNER LEONARD & DARREN HENSCHALL
GRADE FULLBLOOD
BLOOD 100%

GENETIC CONDITIONS B3F, CHSF, CL16F, F11F, IARSF
EXPORT STATUS Australia only

SIRE OWNER COMMENTS

S009 is a very high growth bull with good length. He has been 60kgs heavier than all our bulls in the same contemporary group the whole way along. His dam is a very big TF151 cow. Totally free of genetic conditions and would make great females with above average marbling.

IMUFQTF148ITOSHIGENAMI (IMP USA)

ADBFA0139MAYURA ITOSHIGENAMI JNR

ADBFX0001MAYURA DAI NI KINNTOU 1

SIRE MYMFQ007ARUBIAL BOND Q007

ADBFA0139MAYURA ITOSHIGENAMI JNR

PMGFL00021PEPPERMILL GROVE L0021

PMGFG0037PEPPERMILL GROVE G037

PEDFAJ1081ITOKITATSURU J1081

IMUFLTF151ITOZURUDOI TF151 (IMP USA)

PEDFAJ433313YASUHIME J433313

DAM HLKFN018LENDARLOU ITOZURIOMICHI

IMUFR3258TF TERUTANI 40/1 (IMP USA)

YY1FX0032BANDON SUPER SUKU FORTIWUN

SUMFU2122SUMO FUKU U2122

**LOT 4 LMR YUKI 9273G****COHORT 2**

GL	BW	200	400	600	MCW	MILK	CWt	EMA	RUMP	RBV	MS	MF	WBI	SRI	FTI	FII
-1.1	-1	-2	-6	-6	-8	-3	5	1.8	0.8	-1.3	2.9	0.39	149	190	198	208
62%	70%	71%	71%	71%	63%	65%	69%	66%	61%	59%	64%	62%	JULY 2022 WAGYU GROUP BREEDPLAN			

REGO NO. LMRFQ9273
DOB 15/4/19
COLOUR BLACK

SIRE OWNER LONE MOUNTAIN CATTLE CO
GRADE FULLBLOOD
BLOOD 100%

GENETIC CONDITIONS B3F, CHSF, CL16FU, F11F, IARSF
EXPORT STATUS Australia, New Zealand, USA, Canada, Mexico,
South Africa

SIRE OWNER COMMENTS

LMR Yuki 9273G, sired by Kitaguni Jr out of a dam sired by Itoshigenami TF148, ranks in the top 1% of all Wagyu bulls outside of Japan for MS. WKS Kitaguni Jr, was the #1 dam sire in the most recent Lone Mountain sire performance study for IMF (84 carcasses = average 34.81% IMF). Kitaguni Jr shows decent numbers as a sire, averaging 34.28% IMF on 121 LMR imaged carcasses. In BREEDPLAN, Kitaguni Jr is one of the leading sires with a MS of +2.0 and is a trait leader and top 1% for the BW EBV (-3.5). Itoshigenami TF148 is the sire of Mayura Itoshigenami Jnr O139, the so-called "The King of Australian Wagyu Sires" and grandsire of Mayura L0010. TF148 is a trait leader and within the top 5% for the BW (-1.7) and is a trait leader and ranks in the top 1% for MS (+2.2). 9273G's dam, LMR MS Itoshigenami 9320W, is Lone Mountain's most valuable donor, having produced 27 calves, including a Yasufuku cow that graded 36% IMF; 2 Kitaguni steers that graded 43% and 36% IMF; a 38% Haruki steer; and 3 434B steers that graded 40%, 38% and 37% IMF. 9320W's dam, LMR MS Sanjiro 4P 714T, produced a 40% IMF Kitaguni steer before she was sold, and 2 of our most valuable donors (still active) in addition to 9320W.

PEDFAJ65DAI 7 ITOZAKURA J65

PEDFAJ1530KITAGUNI 7-8 J1530

PEDFAJ81009KITAGUNI 7 J81009

SIRE WKSFP0001WORLD K'S KITAGUNI JR

PEDFAJ2132YUKIFUKU J2132

WKSFM2893WORLD K'S NAKAYUKI J13943

PEDFANAKHANA3NAKHANA 3 J1792470

PEDFA10632SHIGESHIGENAMI J10632

IMUFQTF148ITOSHIGENAMI (IMP USA)

PEDFA661FUKUYUKI

DAM LMRFE9320WLMR MS ITOSHIGENAMI 9320W

IMUFY5663BAR R SANJIRO 4P (IMP USA)

LMRFC714TLMR MS SANJIRO 4P 714T

USAFB4229BAR R MISS 24H

**LOT 5 LMR ITOSHIGENAMI 0397H****COHORT 2**

GL	BW	200	400	600	MCW	MILK	CWt	EMA	RUMP	RBV	MS	MF	WBI	SRI	FTI	FII
2.2	-3.1	-11	-19	-30	-28	-4	-12	6	1.6	-0.6	3	0.4	132	188	198	221
64%	70%	71%	70%	71%	65%	66%	70%	66%	64%	61%	66%	64%	JULY 2022 WAGYU GROUP BREEDPLAN			

REGO NO. LMRFR0397
DOB 23/4/20
COLOUR BLACK

SIRE OWNER LONE MOUNTAIN CATTLE CO
GRADE FULLBLOOD
BLOOD 100%

GENETIC CONDITIONS B3F, CHSF, CL167%, F11F, IARSFU
EXPORT STATUS Australia, New Zealand, USA, Canada, Mexico,
South Africa

SIRE OWNER COMMENTS

LMR Itoshigenami 0397H, sired by Itoshigenami TF148 out of a dam sired by Kitaguni Jr, ranks in the top 1% of all Wagyu bulls outside of Japan for MS and BW, TF148 also ranks in the top 3% for both MF EBV (+0.29). Itoshigenami TF148 is the sire of Mayura Itoshigenami Jnr 0139, the so-called "The King of Australian Wagyu Sires" and grandsire of Mayura L0010. TF148 is a trait leader and top 5% for BW EBV (-1.7) and ranks in the top 1% for MS (+2.2). WKS Kitaguni Jr, was the #1 dam sire in the most recent Lone Mountain sire performance study for IMF (84 carcasses = average 34.81% IMF). Kitaguni Jr shows good numbers as a sire, averaging 34.28% IMF on 121 LMR imaged carcasses. In BREEDPLAN, Kitaguni Jr is one of the leading sires with a MS EBV of +2.0 and is a trait leader and within the top 1% for BW (-3.5). 0397H's dam, LMR MS Kitaguni 8168U, is one of Lone Mountain's best donor cows, having produced 54 calves, including 5 Itoshigenami TF148 steers that graded 45%, 43%, 42%, 41%, and 39% IMF and 2 herd sires. In addition, she has produced an astounding 315 viable embryos in 40 flushes (average = 7.88 viable embryos per flush). 8168U is a full sibling to LMR Kitaguni 1441Y. 8168U's dam, BR MS Yasufuku 0645, produced 22 calves, including a steer by Kitaguni Jr that graded 50% IMF - and 2 donor cows and 2 herd sires.

PEDFAJ6109SHIGEKANENAMI J6109

PEDFA10632SHIGESHIGENAMI J10632

PEDFAJ774695SHIGEMITSU J774695 (FB4751)

SIRE IMUFQTF148ITOSHIGENAMI (IMP USA)

PEDFAJ10756FUKUMASA J10756

PEDFA661FUKUYUKI

PEDFAJ456691YUKIZAKURA J456691

PEDFAJ1530KITAGUNI 7-8 J1530

WKSFP0001WORLD K'S KITAGUNI JR

WKSFM2893WORLD K'S NAKAYUKI J13943

DAM LMRFD8168ULMR MS KITAGUNI 8168U

WKSFS0100WORLD K'S YASUFUKU JR (FB5061)

USAFB5084BR MS YASUFUKU 0645

PEDFT321MISS BAR R 321H

**LOT 6 M6 RANCH ITOSHIGENAMI R0122H****COHORT 2**

GL	BW	200	400	600	MCW	MILK	CWt	EMA	RUMP	RBV	MS	MF	WBI	SRI	FTI	FII
-0.5	5.2	32	51	74	69	3	67	4.4	-1.8	0.9	2.4	0.35	348	326	277	233
60%	68%	68%	67%	67%	57%	57%	63%	55%	55%	46%	57%	49%	JULY 2022 WAGYU GROUP BREEDPLAN			

REGO NO. M6RFR0122H
DOB 30/9/20
COLOUR BLACK

SIRE OWNER LANDGRAF RANCH
GRADE FULLBLOOD
BLOOD 100%

GENETIC CONDITIONS B3F, CHSF, CL16FU, F11F, IARSF
EXPORT STATUS USA & Australia

SIRE OWNER COMMENTS

M6 Ranch Itoshigenami R0122H was one of the top selling bulls from the April M6 Sale. In the recent June 2022 BREEDPLAN, he leads with top 1% in all four Selection Indexes including WBI (+\$348), SRI (+\$326), FTI (+\$277), and FII (+\$233). On individual traits, he gives you the double shot of growth and marbling with top 1% -5% on 200/400/600Day Weights, MCW & CWt. He scores top 5% on MS (+2.4) and MF (+0.35). Son of Mayura L0010, who has risen to the top in the wagyu world. 0122H's pedigree combines the genetics of the King of Australian Sires (JNR) with TF151 Itozurudoi, Kanadagene 100, and the Aizakura maternal line. These legends of the Wagyu breed are stacked on an established, leading maternal line that has produced proven sires such as; Macquarie Wagyu C1176, TF Itohana 2, Blackmore Aizatzurudoi Y398, and Blackmore Dai Ichi Kikuzakura H017! Free of all genetic conditions.

IMUFQTF148ITOSHIGENAMI (IMP USA)
ADBF0139MAYURA ITOSHIGENAMI JNR
ADBF0001MAYURA DAI NI KINNTOU 1
SIRE ADBFL0010MAYURA L0010
ADBF0025MAYURA ZULU
ADBFH0159MAYURA H0159
WGWF08371WAGYU GENETICS AIZAKURA D8371
USAFB9420MICHİYOSHI
USAFB21095MFC MICHİYOSHI 522C
PEDFB13942MFC MS ITOSHIGEFUJI 2-9
DAM M6RFP858FM6 RANCH M6 MS MICHİYOSHI 858FET
PEDFB12865KR FRONT LINE 115
USAFB17802KR MS NEW LEVEL 167
KR2FG122KR MS NEW LEVEL 122

**LOT 7 M6 RANCH ITOSHIGENAMI R073H****COHORT 2**

GL	BW	200	400	600	MCW	MILK	CWt	EMA	RUMP	RBV	MS	MF	WBI	SRI	FTI	FII
0.2	6.2	33	54	80	74	4	61	2.3	0	0.1	2.3	0.35	339	312	266	219
59%	67%	67%	66%	66%	56%	57%	62%	54%	55%	47%	56%	50%	JULY 2022 WAGYU GROUP BREEDPLAN			

REGO NO. M6RFR073H
DOB 17/8/20
COLOUR BLACK

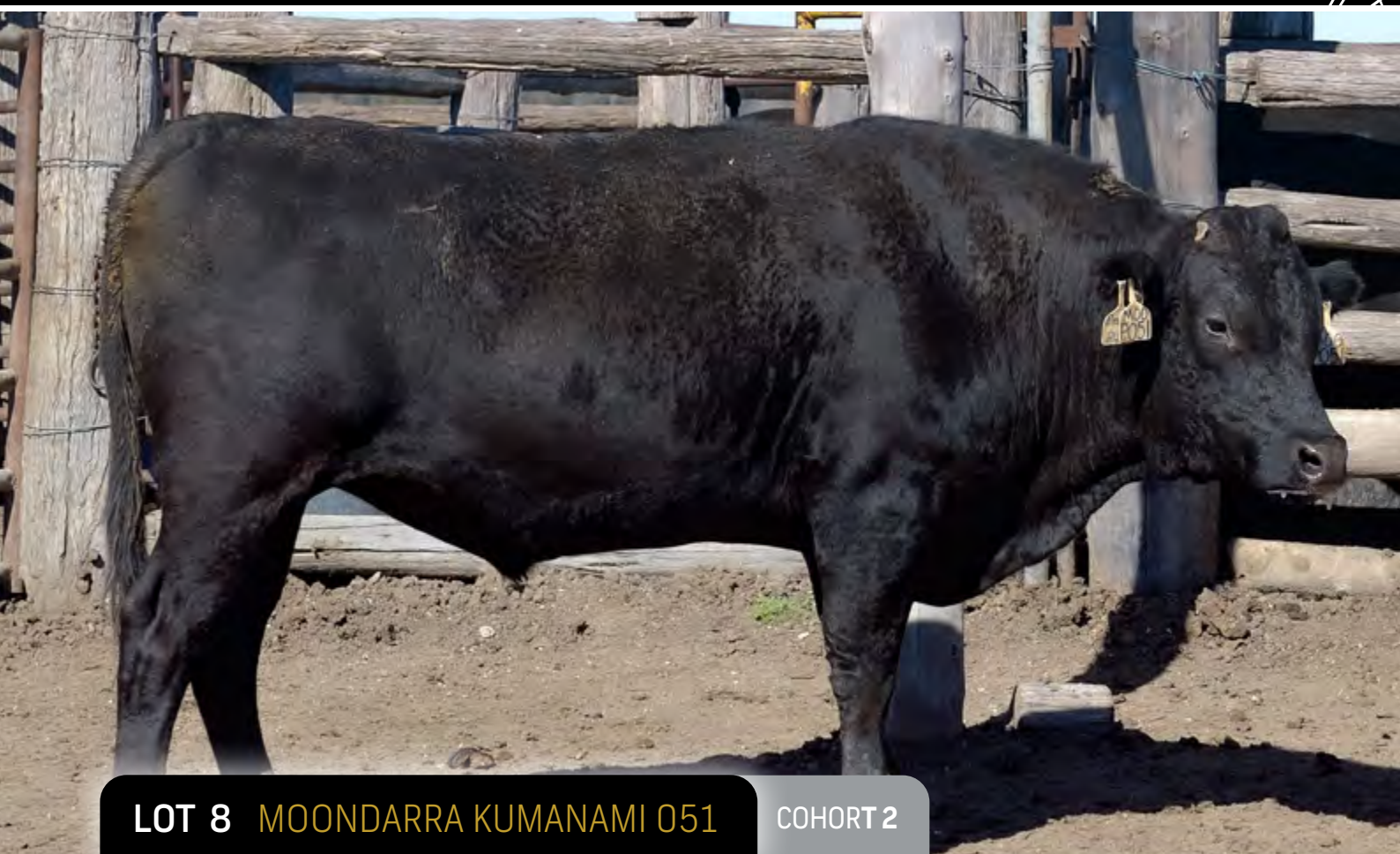
SIRE OWNER M6 CATTLE CO
GRADE FULLBLOOD
BLOOD 100%

GENETIC CONDITIONS **B3F, CHSF, CL16FU, F11F, IARSF**
EXPORT STATUS All except EU

SIRE OWNER COMMENTS

M6 Ranch Itoshigenami R073H also known as "Mr Universe" is the record setting L10-sired bull from the most recent M6 sale and sold for a record \$190,000 for 50% interest. He not only stands out in BREEDPLAN, but on the hoof with tremendous performance, length of body, and extra body depth with a bold spring of rib. In the recent June 2022 BREEDPLAN, he leads with top 1% in three Selection Indexes including WBI (+\$339), SRI (+\$312), FTI (+\$266), and the top 5% in FII (+\$219). On individual traits, he gives you the double shot of growth and marbling with top 1% in 400/600Day Weights, MCW & CWt. He scores top 3% on MS (+2.3) and top 4% on MF (+0.35). 073H is a son of Mayura L0010, who has risen to the top in the wagyu world. 073H's pedigree combines the genetics of the King of Australian Sires (JNR) with TF151 Itozurudoi, Kanadagene 100, and the Aizakura maternal line. These legends of the Wagyu breed are stacked on an established, leading maternal line that has produced proven sires Macquarie Wagyu C1176, TF Itohana 2, Blackmore Aizatzurudoi Y398, and Blackmore Dai Ichi Kikuzakura H017! "Mr Universe 073H" is a generational breeding tool with growth and marbling that will transform efficiency in the Wagyu industry. He is free of all genetic conditions.

IMUFQTF148ITOSHIGENAMI (IMP USA)
ADBFA0139MAYURA ITOSHIGENAMI JNR
ADBFX0001MAYURA DAI NI KINNTOU 1
SIRE ADBFL0010MAYURA L0010
ADBFZ0025MAYURA ZULU
ADBFH0159MAYURA H0159
WGWFD8371WAGYU GENETICS AIZAKURA D8371
IMJFAJ2351HIRASHIGETAYASU J2351 HONGEN (IMP JAP)
PEDFB12865KR FRONT LINE 115
PEDFB866ORSC MS KIRASURU Y-3
DAM M6RFP890FM6 RANCH M6 MS HIRASHIGETAYASU 890F
WKSFM0164WORLD K'S MICHIFUKU
USAFB22516PRIMELINE MS MICHITO Y09
PEDFB9774CHR MS ITOZURU DOI 361

**LOT 8 MOONDARRA KUMANAMI 051****COHORT 2**

GL	BW	200	400	600	MCW	MILK	CWt	EMA	RUMP	RBV	MS	MF	WBI	SRI	FTI	FII
-1.3	-0.7	1	-5	-8	-6	-8	-17	8.5	-4.4	2.2	1.6	0.15	173	202	137	141
63%	72%	74%	73%	73%	64%	65%	69%	62%	64%	55%	65%	59%	JULY 2022 WAGYU GROUP BREEDPLAN			

REGO NO. MOOFP0051
DOB 9/4/18
COLOUR BLACK

SIRE OWNER ARUBIAL PTY LTD
GRADE FULLBLOOD
BLOOD 100%

GENETIC CONDITIONS **B3F, CHSF, CL16F, F11F, IARSFU**
EXPORT STATUS Australia only

SIRE OWNER COMMENTS

Moondarra Kumanami 051 is a medium framed bull that is free of all known recessive genetic conditions. He is uniquely distinguished by the fact that all four of his Great Grand-Dams is WKSFL0976 World K's Suzutani (FB1617).

WKSFM0164WORLD K'S MICHIFUKU

WKSFP0100WORLD K'S SANJIROU

WKSFL0976WORLD K'S SUZUTANI (FB1617)

SIRE WKSFU0005WORLD K'S YUJIROU

WKSFM0139WORLD K'S HARUKI 2 (FB1614)

WKSFQ0009WORLD K'S YOUKO

WKSFL0976WORLD K'S SUZUTANI (FB1617)

WKSFM0164WORLD K'S MICHIFUKU

WKSFP0100WORLD K'S SANJIROU

WKSFL0976WORLD K'S SUZUTANI (FB1617)

DAM MCPFD1223CHOKYORI 1223

WKSFN2892WORLD K'S TAKAZAKURA

PEDFB6032SUZUTAKA 2

WKSFL0976WORLD K'S SUZUTANI (FB1617)

**LOT 9 MOYHU SHIKIYASU 2****COHORT 2**

GL	BW	200	400	600	MCW	MILK	CWt	EMA	RUMP	RBV	MS	MF	WBI	SRI	FTI	FII
0.9	1.5	3	5	5	15	-6	0	3.9	-5.1	1.4	1.6	0.25	136	145	109	105
62%	75%	72%	71%	71%	65%	64%	68%	62%	63%	57%	64%	59%	JULY 2022 WAGYU GROUP BREEDPLAN			

REGO NO. MOYFM0033
DOB 1/4/16
COLOUR BLACK

SIRE OWNER WAGYU GENETICS VICTORIA PTY LTD
GRADE FULLBLOOD
BLOOD 100%

GENETIC CONDITIONS B3FU, CHSFU, CL16FU, F1111%, IARS50%
EXPORT STATUS All except EU

SIRE OWNER COMMENTS

Moyhu Shikiyasu 2 is sired by TWAFR0007 Shikikan and produced from one of Moyhu Wagyu's best cows MOYFA0232. Shikiyasu 2 has produced 12 carcasses from two separate slaughter groups to date with marble scores of nothing less than 9 and 9+, hopefully this data will be submitted to BREEDPLAN in the near future. More feeder cattle sired by Shikiyasu 2 will be ready for slaughter shortly and we are expecting good results from these animals also. Shikiyasu 2 is a full brother of Shikiyasu (MOYFM0026) who has EBV's for MS of +2.5 and MF +0.35, EMA of +5.2 and mature cow weight of +32. We expect Shikiyasu 2 to exceed an EBV of +2.5 for marbling. Before going to collection Shikiyasu 2 weighed around 850kgs. While not the heaviest of our bulls he makes up for in his pedigree. Sired by Shikikan and having Kitateruyasudoi and Michifuku on his dam's side who herself has produced 9+ carcasses and gives him 80% Tajima blood. Shikiyasu 2 would be ideal for both Fullblood and Crossbred Wagyu breeders looking to lift marbling.

PEDFAJ1412TAKAEI J1412

WKSFN2892WORLD K'S TAKAZAKURA

PEDFASAKURA7DAI 2 SAKURA 7 J1713278

SIRE TWAFR0007TWA SHIKIKAN (IMP USA)

PEDFA211TANISHIGE 1526 - KURO KOH

WKSFL0976WORLD K'S SUZUTANI (FB1617)

PEDFASUZUNAMISUZUNAMI 472255

PEDFAJ1742TERUNAGADOI 1742

IMJFAJ2810KITATERUYASUDOI J2810 HONGEN (IMP JAP)

PEDFAJ601124YOSHIMI 3 601124

DAM MOYFA0232MOYHU F A0232

WKSFM0164WORLD K'S MICHIFUKU

MOYFW0039MOYHU F W039

TWAFT0493TWA 493

**LOT 10 OLIVE GROVE WAGYU R18**

COHORT 2



GL	BW	200	400	600	MCW	MILK	CWt	EMA	RUMP	RBV	MS	MF	WBI	SRI	FTI	FII
-0.9	4.5	23	39	46	59	-5	43	1.4	-3.4	0.2	2.3	0.46	280	277	225	198
59%	69%	71%	70%	70%	60%	61%	66%	58%	60%	51%	61%	52%	JULY 2022 WAGYU GROUP BREEDPLAN			

REGO NO. OGWFR18
DOB 30/1/20
COLOUR BLACK

SIRE OWNER AOA QLD PTY LTD
GRADE FULLBLOOD
BLOOD 100%

GENETIC CONDITIONS B3F, CHSF, CL16F, F11F, IARSF
EXPORT STATUS USA & Canada

SIRE OWNER COMMENTS

R18 is OGW's highest ranked bull for the 2020 breeding year, with a current SRI of +\$277. His sire SMOFL00195 has an SRI +\$307 and is ranked 46th for SRI on BREEDPLAN. Combine this with R18's dam, SMOFL00062, who is by SMOFF0154 and out of a dam by Shikikan on the top side and a TF151 daughter on the bottom side, you have a bull well and truly bred to produce the best. R18 is ranked in the top 1% for WBI & SRI and is free of all genetic disorders.

WKSFM0164WORLD K'S MICHIFUKU
SMOFF0154SUMO CATTLE CO MICHIFUKU F154
SMOFC0016SUMO CATTLE CO TANI C016
SIRE SMOFL00195SUMO CATTLE CO MICHIFUKU L195
SUMFX0081SUMO ITOSHIGENAMI X0081
CCOFD0270COATES NAMI D270
SUMFW1531SUMO RUNO W1531
WKSFM0164WORLD K'S MICHIFUKU
SMOFF0154SUMO CATTLE CO MICHIFUKU F154
SMOFC0016SUMO CATTLE CO TANI C016
DAM SMOFL00062SUMO CATTLE CO FUKU L62
TWAFR0007TWA SHIKIKAN (IMP USA)
SMOFD0205SUMO CATTLE CO KAN D205
SUMFW0960SUMO DOI W0960

LOT 11 WITHDRAWN

COHORT 2



GL	BW	200	400	600	MCW	MILK	CWt	EMA	RUMP	RBV	MS	MF	WBI	SRI	FTI	F1I

JULY 2022 WAGYU GROUP BREEDPLAN

LOT 11
WITHDRAWN
FROM SALE

REGO NO. OKBFM
DOB 26/1/16
COLOUR BLACK

ER
ULLBLOOD
00%

GENETIC CONDITIONS **B3F, CHSF, CL16F, F11F**, IARS99%
EXPORT STATUS Australia only

SIRE OWNER COMMENTS

**LOT 12 SUNNYSIDE R0009**

COHORT 2



GL	BW	200	400	600	MCW	MILK	CWt	EMA	RUMP	RBV	MS	MF	WBI	SRI	FTI	FII
-2.8	-0.5	13	23	32	24	2	41	6.9	-2.8	1.4	2.7	0.41	290	304	277	260
64%	71%	74%	73%	73%	63%	66%	71%	65%	65%	56%	68%	57%	JULY 2022 WAGYU GROUP BREEDPLAN			

REGO NO. PSKFR0009
DOB 19/6/20
COLOUR BLACK

SIRE OWNER RN KRAUSE & CO
GRADE FULLBLOOD
BLOOD 100%

GENETIC CONDITIONS B3F, CHSF, CL16FU, F11F, IARSF
EXPORT STATUS Australia only

SIRE OWNER COMMENTS

Sunnyside PSKFR0009 is a son of the superstar CCOFG0113, who is easily one of the top proven carcase sires in Australia. Out of the dam PSKFK0090 who herself goes back to Michifuku and Terutani 40/1. It is important to note the maternal grandsire CCOFZ0116 boosts proven accuracy for all EBVs, which supports PSKFR0009's carcase weight and maternal traits, including growth and milk. Impressively this Bull is in the top 1% for all indexes reflective of very balanced EBV's. Starting with a below average birth weight, he has above average growth traits and milk, along with EBVs for CWt in the top 10%, EMA top 5% and MS in the top 1%. PSKFR0009 himself is free from all known genetic disorders. PSKFR0009 would be well suited to any enterprise from F1 producer to the savvy self-replacing fullblood herd.

IMUFQTF148ITOSHIGENAMI (IMP USA)
SMOFC0158SUMO CATTLE CO ITOSHIGENAMI C0158
SUMFU2208SUMO MICHIFUKU U2208

SIRE CCOFG0113COATES ITOSHIGENAMI G113

IMUFR3258TF TERUTANI 40/1 (IMP USA)
CCOFC0446COATES TANI C446
IMUFS3937TF HIKOHIME 34/6 (IMP USA)
IMUFR3258TF TERUTANI 40/1 (IMP USA)
CCCFZ0116BALD RIDGE TERUTANI 40/1 Z116
CCCFW0004BALD RIDGE HAYAFUKU W04

DAM PSKFK0090SUNNYSIDE FK0090

WKSFM0164WORLD K'S MICHIFUKU
LSRFB0394DOOR KEY F B394
LSRFV0370DOOR KEY F V370

LOT 13 WITHDRAWN



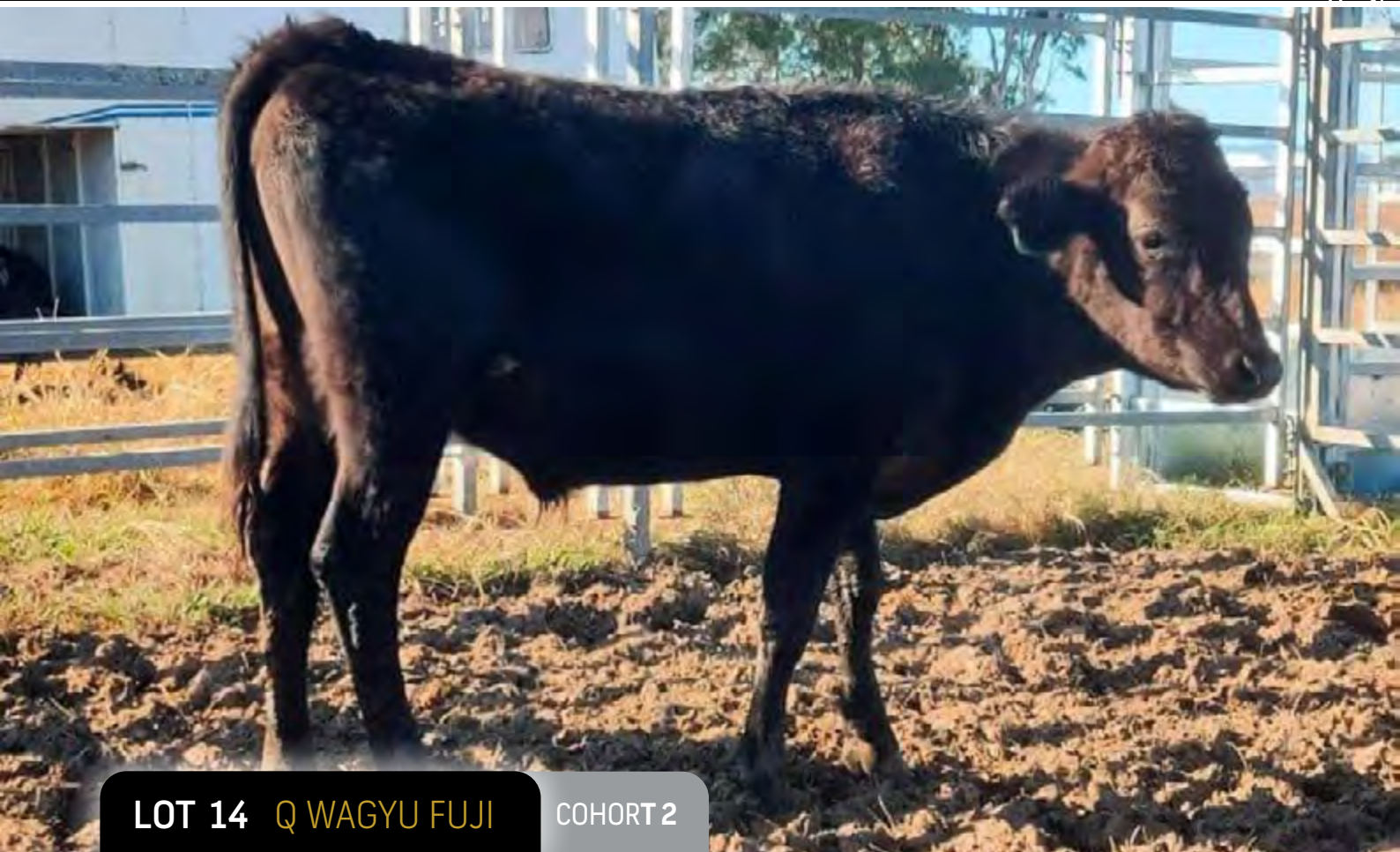
GL	BW	200	400	600	MCW	MILK	CWt	EMA	RUMP	RBY	MS	MF	WBI	SRI	FTI	F1I

JULY 2022 WAGYU GROUP BREEDPLAN

“ The sale provides a unique opportunity for the Wagyu community to both access genetics set to be proven through the program, and link their herds to the AWA-PTP reference population ...

Dr Matt McDonagh
Australian Wagyu Association, CEO



**LOT 14 Q WAGYU FUJI****COHORT 2**

GL	BW	200	400	600	MCW	MILK	CWt	EMA	RUMP	RBY	MS	MF	WBI	SRI	FTI	FII
0.7	0.2	6	13	15	22	-6	14	1.2	-1	-0.1	1.7	0.36	176	191	157	151
59%	69%	69%	68%	68%	59%	58%	64%	57%	58%	50%	60%	53%	JULY 2022 WAGYU GROUP BREEDPLAN			

REGO NO. QLDFR0001
DOB 21/9/20
COLOUR BLACK

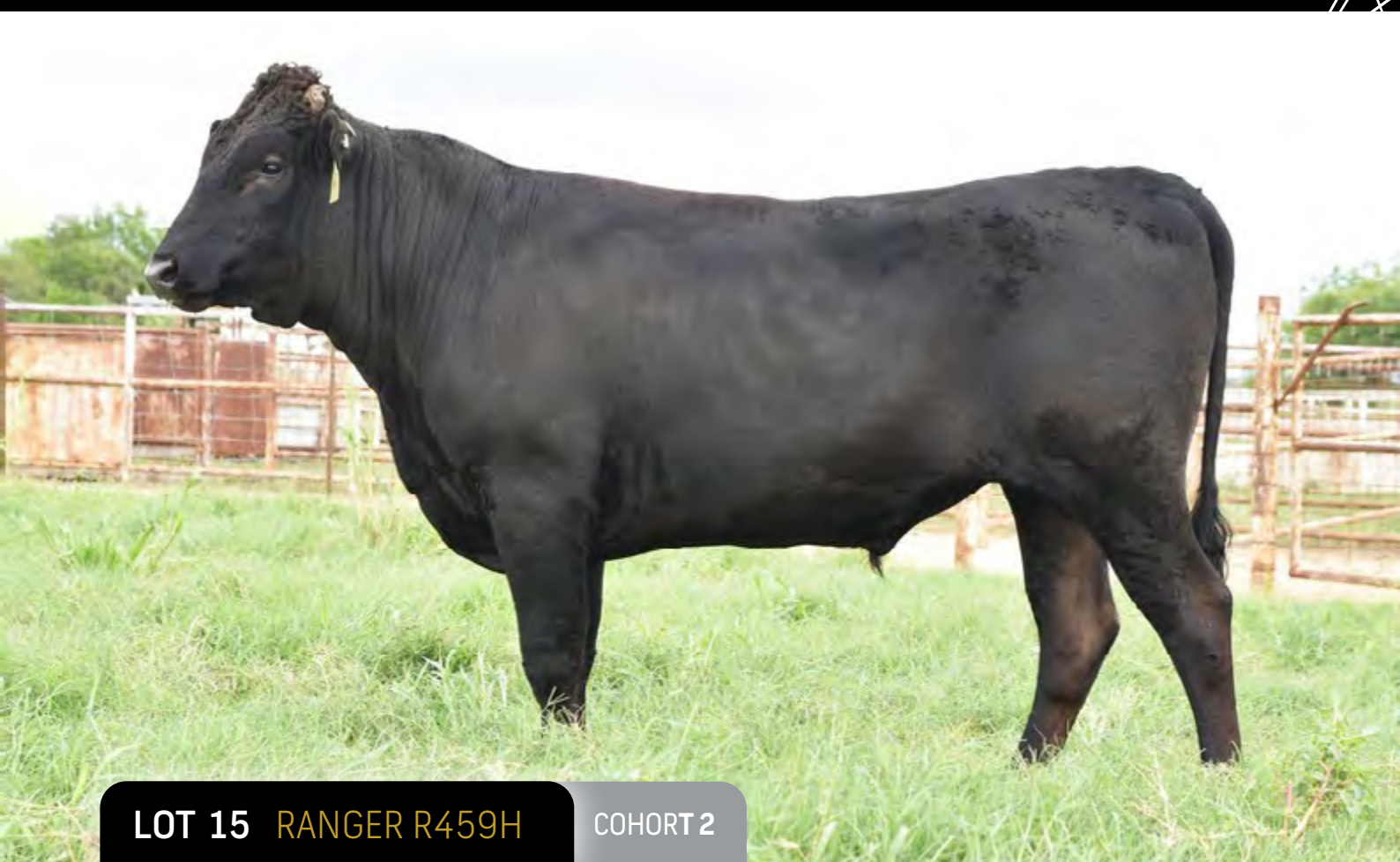
SIRE OWNER QUEENSLAND WAGYU
GRADE FULLBLOOD
BLOOD 100%

GENETIC CONDITIONS **B3F, CHSF, CL16F, F11F, IARSF**
EXPORT STATUS Australia only

SIRE OWNER COMMENTS

N/A

WKSFM0164WORLD K'S MICHIFUKU
SMOFF0154SUMO CATTLE CO MICHIFUKU F154
SMOFC0016SUMO CATTLE CO TANI C016
SIRE SMOFL00153SUMO CATTLE CO MICHIFUKU L153
SUMFX0081SUMO ITOSHIGENAMI X0081
SMOFE0071SUMO CATTLE CO NAMI E071
CCOFA0089COATES NAMI A089
PEDFA10632SHIGESHIGENAMI J10632
IMUFQTF148ITOSHIGENAMI (IMP USA)
PEDFA661FUKUYUKI
DAM LINF08424LINDAN F08424
WKSFPC100WORLD K'S KANADAGENE 100
BENFX0158BENLEE AIZAKURA X158
SUMFT0908SUMO RUKI T908

**LOT 15 RANGER R459H****COHORT 2**

GL	BW	200	400	600	MCW	MILK	CWt	EMA	RUMP	RBV	MS	MF	WBI	SRI	FTI	FII
0.1	0.6	11	23	30	27	6	38	8.6	-0.4	1.6	2.3	0.39	255	255	242	224
64%	71%	71%	70%	70%	61%	62%	67%	60%	60%	52%	62%	56%	JULY 2022 WAGYU GROUP BREEDPLAN			

REGO NO. RGRFR459H
DOB 9/4/20
COLOUR BLACK

SIRE OWNER BRENNER CATTLE COMPANY
GRADE FULLBLOOD
BLOOD 100%

GENETIC CONDITIONS B3FU, CHS50%, CL16FU, F11FU, IARSFU
EXPORT STATUS Australia, US, Central America, South America,
Thailand and Philippines

SIRE OWNER COMMENTS

A son of Mayura L10 and the highly respected LMR MS Itomoritaka 1439Y donor cow, Ranger R459H is also a full brother of the \$150,000 and \$120,000 bulls sold earlier this year. In BREEDPLAN, Ranger R459H stands in the top 1% for EMA and FTI while top 5% for RBV, MS, MF, WBI, SRI, FII, and MILK. According to Brushy Creek Custom Sire's, his semen quality is well above average with 35-40% average post thaw motility (industry average = 25%) and 18-20M live motile cells per straw (industry average 10-12M). With this semen you can expect above average conception rates from a bull with incredible carcass EBVs, that still brings +6 MILK!

IMUFQTF148ITOSHIGENAMI (IMP USA)

ADBFA0139MAYURA ITOSHIGENAMI JNR

ADBFX0001MAYURA DAI NI KINNTOU 1

SIRE ADBFLO010MAYURA L0010

ADBFZ0025MAYURA ZULU

ADBFH0159MAYURA H0159

WGWFD8371WAGYU GENETICS AIZAKURA D8371

PEDFAJ1555ITOHIRASHIGE J1555

IMJFAJ2703ITOMORITAKA J2703 HONGEN (IMP JAP)

PEDFAJ565554DAI 6 OEFUJII J565554 - KURO KOH

DAM RGRFG1439RANGER ITOMORITAKA 1439Y

IMUFQTF148ITOSHIGENAMI (IMP USA)

LMRFD8107ULMR MS ITOSHIGENAMI 8107U

USAFB4473BR MS MICHIFUKU T4E 8605



image currently
unavailable

LOT 16 COOCHIN MICHIFUKU 086

COHORT 2



GL	BW	200	400	600	MCW	MILK	CWt	EMA	RUMP	RBV	MS	MF	WBI	SRI	FTI	FII
0	4.1	31	41	54	62	-4	41	0	-1.4	-0.2	2.2	0.41	302	297	237	207
81%	74%	87%	78%	77%	64%	60%	69%	55%	56%	47%	56%	48%	JULY 2022 WAGYU GROUP BREEDPLAN			

REGO NO. SRQFP086
DOB 20/8/18
COLOUR BLACK

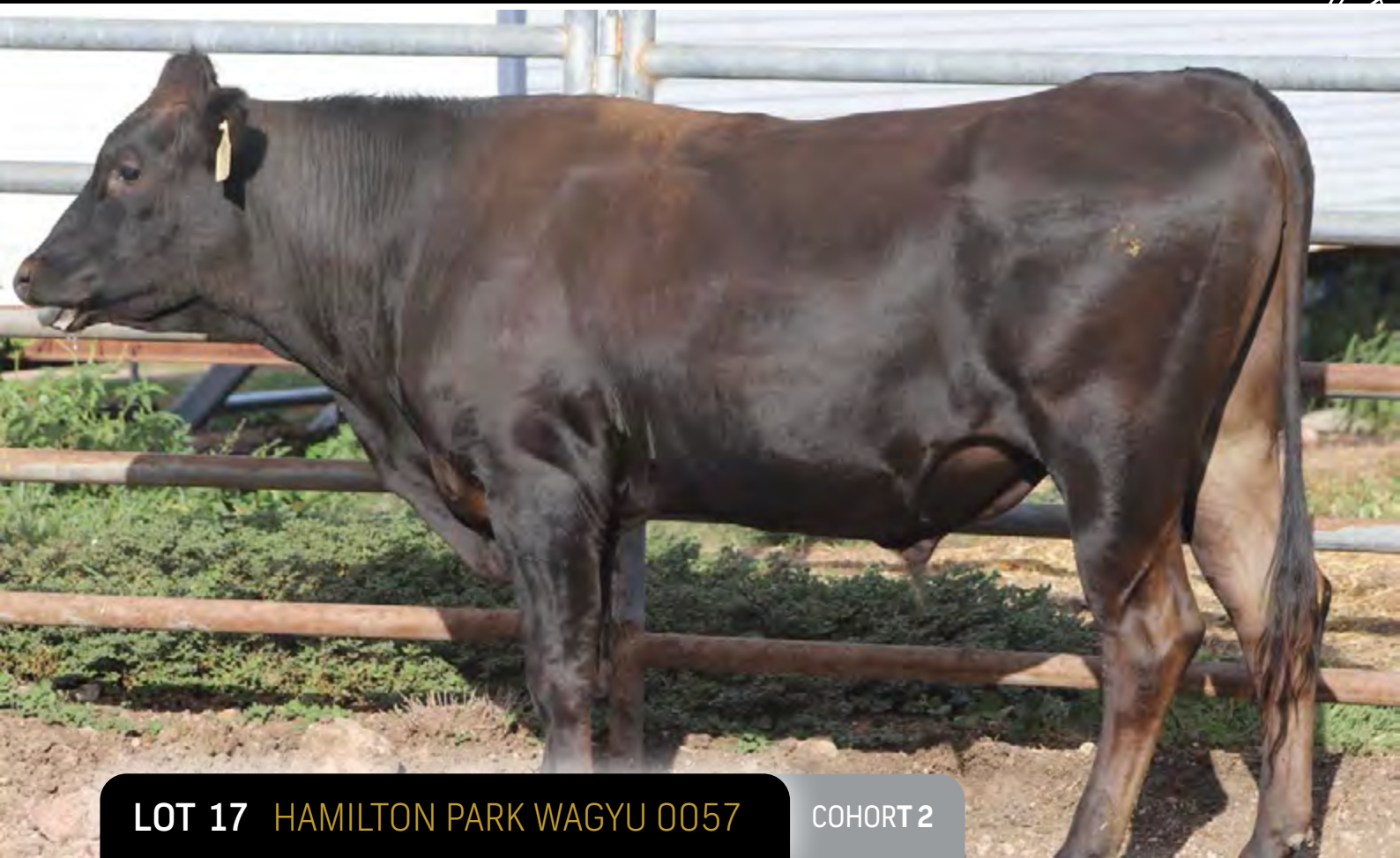
SIRE OWNER TRENT BRIDGE WAGYU STUD
GRADE FULLBLOOD
BLOOD 100%

GENETIC CONDITIONS B3FU, CHSFU, CL16FU, F11FU, IARSC
EXPORT STATUS Australia only

SIRE OWNER COMMENTS

Coochin Michifuku 086 was purchased in 2019 from Coochin Wagyu to provide diversity to the Trent Bridge Wagyu program. Since then, P86 has been used heavily each year in the stud. He provides a superb balance of elite MS (2.2) and very strong growth traits. His female progeny have grown out very nicely and have already entered the stud program.

WKSFM0164WORLD K'S MICHIFUKU
SMOFF0154SUMO CATTLE CO MICHIFUKU F154
SMOFC0016SUMO CATTLE CO TANI C016
SIRE SMOFL00195SUMO CATTLE CO MICHIFUKU L195
SUMFX0081SUMO ITOSHIGENAMI X0081
CCOFD0270COATES NAMI D270
SUMFW1531SUMO RUNO W1531
IMJFAJ2351HIRASHIGETAYASU J2351 HONGEN (IMP JAP)
SMOFE0148SUMO CATTLE CO HIRASHIGETAYASU E148
SUMFW1433SUMO NAMI W1433
DAM MCKFL01283CODENWARRA HIRASHIGETAYASU L1283
SUMFV2313SUMO TERUTANI V2313
MCKFA0161CODENWARRA F A0161
MCKFW0037CODENWARRA F W0037

**LOT 17 HAMILTON PARK WAGYU 0057****COHORT 2**

GL	BW	200	400	600	MCW	MILK	CWt	EMA	RUMP	RBV	MS	MF	WBI	SRI	FTI	FII
1.8	-1.7	-3	-4	-5	-14	-5	-11	6	1.2	0.3	1.2	0.08	121	148	131	137
54%	67%	68%	67%	67%	57%	58%	63%	57%	56%	50%	57%	52%	JULY 2022 WAGYU GROUP BREEDPLAN			

REGO NO. HPWFR0057
DOB 7/7/2020
COLOUR BLACK

SIRE OWNER HAMILTON PARK PASTORAL CO
GRADE FULLBLOOD
BLOOD 100%

GENETIC CONDITIONS **B3F, CHSF, CL16FU, F11C, IARSF**
EXPORT STATUS Australia only

SIRE OWNER COMMENTS

Hamilton Park Wagyu 0057 is an outstanding son of G113 and from an excellent cow in PMGFL00037. Very high marbling on both sides here. R0057 is in the top 5% for CWT, top 1% for MS and top 1% MF.

ITOSHIGENAMI (IMP USA)

SUMO CATTLE CO ITOSHIGENAMI C0158

SUMO MICHIFUKU U2208

SIRE COATES ITOSHIGENAMI G113

TF TERUTANI 40/1 (IMP USA)

COATES TANI C446

TF HIKOHIME 34/6 (IMP USA)

HIRASHIGETAYASU J2351 HONGEN (IMP JAP)

GINJO MARBLEMAX HIRANAMI B901

GINJO F Z158

DAM PEPPERMILL GROVE L0037

KITATERUYASUDO J2810 HONGEN (IMP JAP)

PEPPERMILL GROVE F D026

KILALAH NAMI W020

**LOT 18 STARTZ TORUKU****COHORT 2**

GL	BW	200	400	600	MCW	MILK	CWt	EMA	RUMP	RBV	MS	MF	WBI	SRI	FTI	FII
-0.2	0.9	11	20	23	29	-3	28	3.4	-3.2	1.5	1.2	0.21	180	178	132	118
51%	63%	65%	64%	64%	54%	55%	60%	52%	53%	45%	54%	47%	JULY 2022 WAGYU GROUP BREEDPLAN			

REGO NO. STZFR0011
DOB 23/8/20
COLOUR BLACK

SIRE OWNER STARTZ CATTLE CO
GRADE FULLBLOOD
BLOOD 100%

GENETIC CONDITIONS B3FU, CHSFU, CL16FU, F1113%, IARS40%
EXPORT STATUS USA and Australia

SIRE OWNER COMMENTS

Startz Toruku is an across the board well balanced bull whose pedigree is full of the power house foundation animals in the breed. All topped off with possibly one of the Wagyu industry's best kept secrets.. Ekichi who is a direct son of J930. Our focus when breeding this pedigree was to keep Yasumi Doi & Shigekananami blood constant throughout the pedigree for high quality marbling, fineness & REA while utilizing Dia 7 and Monjiro genetics in the background for positive growth & frame characteristics without sacrificing carcass quality. Our objective was connectivity throughout the pedigree to enhance the strengths of these great foundation pedigrees. Toruku has a beautiful phenotype, correct in his stance & covers his tracks. His top is level, and he is deep in the flank. We are extremely excited about this bull and his potential to the breed.

PEDFAJ930YASUFUKU J930

PEDFU999WKS EIKICHI (FB20355)

WKSFS11074WORLD K'S TAGUCHI 9

SIRE STZFP0008STARTZ STZ EIKICHINAMI F008

IMUJQTF148ITOSHIGENAMI (IMP USA)

WSIFD064UWSI RIKINAMI 2 (FB13796)

WSIFB12704WSI RIKITERU 2

IMJFAJ2810KITATERUYASUDO J2810 HONGEN (IMP JAP)

ECHFA3001ECHIGO FARMS MAIFUKU

ECHFY3004ECHIGO FARMS F Y3004

DAM STZFP0002STARTZ MS MIAFUKU 151 ET(FB33097)

IMUFLT151ITOZURUDOI TF151 (IMP USA)

PEDFB8985HIRATANACHI

PEDFB6338TAKANASHI

**LOT 19** SUNLAND YOI REI R35

COHORT 2



GL	BW	200	400	600	MCW	MILK	CWt	EMA	RUMP	RBV	MS	MF	WBI	SRI	FTI	FII
1.6	-3.8	-9	-19	-32	-39	1	-20	7.2	3.7	-0.7	2.4	0.37	114	168	190	214
61%	68%	70%	69%	69%	62%	64%	67%	63%	63%	57%	64%	60%	JULY 2022 WAGYU GROUP BREEDPLAN			

REGO NO. SUNFR0035
DOB 3/7/20
COLOUR BLACK

SIRE OWNER SUNLAND CATTLE COMPANY PTY LTD
GRADE FULLBLOOD
BLOOD 100%

GENETIC CONDITIONS B3F, CHSF, CL16F, F11F, IARSF
EXPORT STATUS N/A

SIRE OWNER COMMENTS

SUNFR0035 is a genetic free son of Yasufuku Jr. His dam is by TF148 out of a Michifuku cow, his great grand dam came as an imported embryo from the USA. BREEDPLAN has him rated in the top 5% for MS, MF and EMA. Of all the Yasufuku sons on the AWA website, he is rated equal 12th for MS, equal 2nd for MF with a big EMA. He has a quiet temperament; he was always a meaty calf with a wide square back and top line. We intend to use him widely in our AI programmes this year at Sunland.

PEDFAJ472YASUTANI DOI J472

PEDFAJ930YASUFUKU J930

PEDFM004CHIZURU 85545

SIRE WKSFS0100WORLD K'S YASUFUKU JR (FB5061)

PEDFA201MONJIRO J11550

PEDFQ5KANEKO 5

PEDFAJ47492KANEKO J47492

PEDFA10632SHIGESHIGENAMI J10632

IMUFQTF148ITOSHIGENAMI (IMP USA)

PEDFA661FUKUYUKI

DAM SUNFN0959SUNLAND SUNLANT ITOATO N959

WKSFM0164WORLD K'S MICHIFUKU

EXLFD0053EXCEL MICH I D0053

EXLFV1108EXCEL ASUKA (IMP USA)

**LOT 20 MAYURA LIMESTONE L0081****COHORT 1**

GL	BW	200	400	600	MCW	MILK	CWt	EMA	RUMP	RBV	MS	MF	WBI	SRI	FTI	FII
-0.5	0.8	6	10	20	16	0	32	4.1	1.8	-0.1	1.9	0.39	178	188	167	158
66%	91%	86%	86%	85%	72%	65%	79%	74%	73%	66%	76%	67%	JULY 2022 WAGYU GROUP BREEDPLAN			

REGO NO. ADBFL0081
DOB 21/2/15
COLOUR BLACK

SIRE OWNER MAYURA PTY LTD
GRADE FULLBLOOD
BLOOD 100%

GENETIC CONDITIONS B3F, CHSF, CL16F, F11C, IARSC
EXPORT STATUS USA, EU, UK, South Africa & Canada

SIRE OWNER COMMENTS

Mayura Limestone L0081 is a large-framed sire, with great early maturing properties. His sire, Itozurodoi is well known in the industry to pass on excellent frame, growth and milking ability to his progeny. Within the Mayura program, Itozurodoi carcasses have averaged MS of 8.38, 102.2cm EMA and final HSCW of 441kg from 21 carcasses. Limestone now has 3 carcasses in the Mayura program with an Ave MS of 10, EMA 89cm and HSCW of 465kg. Itoshigenami JNR is the maternal grandsire and has had a positive influence of the marbling ability of this young sire. He is well balanced for both maternal and carcase traits.

PEDFAJ65DAI 7 ITOZAKURA J65

PEDFAJ1081ITOKITATSURU J1081

PEDFAJ101266NISHIZURU J101266

SIRE IMUFLTF151ITOZURUDOITF151 (IMP USA)

PEDFAJ10328YASUMIDOI J10328

PEDFAJ433313YASUHIME J433313

PEDFAJ311983FUJIHIME J311983

IMUFQTF148ITOSHIGENAMI (IMP USA)

ADBFA0139MAYURA ITOSHIGENAMI JNR

ADBFX0001MAYURA DAI NI KINNTOU 1

DAM ADBFH0063MAYURA H0063

WKSFM0164WORLD K'S MICHIFUKU

SWDFE0008SOUTHERN WAGYU SWE008

GOSFU0075GOSHU KIKUNAE

**LOT 21 MAYURA Q2140****COHORT 1**

GL	BW	200	400	600	MCW	MILK	CWt	EMA	RUMP	RBV	MS	MF	WBI	SRI	FTI	FII
-1.7	-0.5	9	13	12	2	2	14	6.9	1.5	0.9	1.3	0.07	184	196	180	174
64%	71%	73%	72%	72%	65%	66%	69%	65%	65%	57%	66%	59%	JULY 2022 WAGYU GROUP BREEDPLAN			

REGO NO. ADBFQ2140
DOB 7/11/19
COLOUR BLACK

SIRE OWNER WRIGHT PASTORAL NSW P/L
GRADE FULLBLOOD
BLOOD 100%

GENETIC CONDITIONS **B3F, CHSF, CL16FU, F11F, IARSF**
EXPORT STATUS Australia only

SIRE OWNER COMMENTS

Mayura Q2140 offers an extraordinary blend of genetics that has proven carcase performance throughout the elite Mayura Fullblood operation.

PEDFA201MONJIRO J11550

WKSFM0139WORLD K'S HARUKI 2 (FB1614)

PEDFA206SAKURA 2 J741638

SIRE WKSFP1593WORLD K'S SHIGESHIGETANI 1593

PEDFA211TANISHIGE 1526 - KURO KOH

WKSFL0976WORLD K'S SUZUTANI (FB1617)

PEDFASUZUNAMISUZUNAMI 472255

IMUFQTF148ITOSHIGENAMI (IMP USA)

ADBFA0139MAYURA ITOSHIGENAMI JNR

ADBFX0001MAYURA DAI NI KINNTOU 1

DAM ADBFK1143MAYURA K1143

WKSFP0001WORLD K'S KITAGUNI JR

ADBFD0407MAYURA F D407

ADBFY0026MAYURA Y0026

**LOT 22 TYDDEWI N3709****COHORT 1**

GL	BW	200	400	600	MCW	MILK	CWt	EMA	RUMP	RBV	MS	MF	WBI	SRI	FTI	FII
-0.5	0.6	13	13	25	22	3	20	1.3	-0.3	-0.2	2.2	0.32	186	189	174	163
66%	80%	76%	75%	75%	67%	65%	71%	65%	66%	58%	66%	60%	JULY 2022 WAGYU GROUP BREEDPLAN			

REGO NO. DSWFN3709
DOB 18/9/17
COLOUR BLACK

SIRE OWNER GRASSLAND WAGYU
GRADE FULLBLOOD
BLOOD 100%

GENETIC CONDITIONS **B3F, CHSF, CL16F, F11C, IARSF**
EXPORT STATUS Australia, USA, EU, UK, South Africa & Canada

SIRE OWNER COMMENTS

Tyddewi N3709 is a direct son of Mayura Itoshigenami Jnr by Westholme K5236, herself a direct daughter of Westholme Hiramichi Tsuru by a TWA Shikikan dam. N3709 balances Kumanami and Kedaka bloodlines with a backbone of Fujiyoshi. This bull is used to yield more kilos on the hook from his progeny with minimal sacrifice to marbling.

PEDFA10632SHIGESHIGENAMI J10632

IMUFQTF148ITOSHIGENAMI (IMP USA)

PEDFA661FUKUYUKI

SIRE ADBFA0139MAYURA ITOSHIGENAMI JNR

WKSFP0100WORLD K'S SANJIROU

ADBFX0001MAYURA DAI NI KINNTOU 1

ADBFW0028MAYURA DAI 2 KINNTOU 7/2

AACFB0545WESTHOLME NAMIYOSHI 4

AACFF0758WESTHOLME HIRAMICHI TSURU

WESFZ0084WESTHOLME HIRA Z0084

DAM AACFK5236WESTHOLME K5236

TWAFR0007TWA SHIKIKAN (IMP USA)

AACFD1203WESTHOLME MIYANISHIKI 2/2

WESFX0484WESTHOLME TERUMIYA

**LOT 23 HAMILTON PARK WAGYU SHIG TANI 0031****COHORT 1**

GL	BW	200	400	600	MCW	MILK	CWt	EMA	RUMP	RBV	MS	MF	WBI	SRI	FTI	F1I
-1.8	-0.6	9	14	14	6	4	6	5.2	0	0.7	2	0.23	207	220	203	198
63%	71%	72%	71%	71%	64%	65%	68%	63%	63%	56%	65%	57%	JULY 2022 WAGYU GROUP BREEDPLAN			

REGO NO. HPWFP0031
DOB 6/8/18
COLOUR BLACK

SIRE OWNER HAMILTON PARK PASTORAL COMPANY
GRADE FULLBLOOD
BLOOD 100%

GENETIC CONDITIONS B3F, CHSF, CL16FU, F11C, IARSFU
EXPORT STATUS Australia only

SIRE OWNER COMMENTS

Hamilton Park Wagyu Shig Tani 0031 is an outstanding son of Shigesigetani 1593, with an exceptional temperament. He is in the top 5% for the F1 Index and the top 15% for SRI. Milk, EMA, and Marble Score are sitting strong in the top 5% of the breed percentiles for 2019 born calves. His dam is a beautifully balanced, correct individual.

PEDFA201MONJIRO J11550

WKSFM0139WORLD K'S HARUKI 2 (FB1614)

PEDFA206SAKURA 2 J741638

SIRE WKSFP1593WORLD K'S SHIGESHIGETANI 1593

PEDFA211TANISHIGE 1526 - KURO KOH

WKSFL0976WORLD K'S SUZUTANI (FB1617)

PEDFASUZUNAMISUZUNAMI 472255

IMJFAJ2351HIRASHIGETAYASU J2351 HONGEN (IMP JAP)

GINFB0901GINJO MARBLEMAX HIRANAMI B901

GINFZ0158GINJO F Z158

DAM PMGFLO0037PEPPERMILL GROVE L0037

IMJFAJ2810KITATERUYASUDO J2810 HONGEN (IMP JAP)

PMGFD0026PEPPERMILL GROVE F D026

KH FW0020KILALAH NAMI W020

**LOT 24 HAMILTON PARK WAGYU 0065****COHORT 1**

GL	BW	200	400	600	MCW	MILK	CWt	EMA	RUMP	RBV	MS	MF	WBI	SRI	FTI	FII
-1.4	2.5	20	37	42	51	-2	41	0.5	0.8	-0.3	1.6	0.34	253	250	205	182
61%	72%	70%	69%	69%	61%	61%	66%	59%	61%	52%	62%	53%	JULY 2022 WAGYU GROUP BREEDPLAN			

REGO NO. HPWFP0065
DOB 9/8/18
COLOUR BLACK

SIRE OWNER HAMILTON PARK PASTORAL COMPANY
GRADE FULLBLOOD
BLOOD 100%

GENETIC CONDITIONS B3F, CHSF, CL16FU, F11F, IARSF
EXPORT STATUS Australia only

SIRE OWNER COMMENTS

Hamilton Park Wagyu 0065 is a standout bull free of known genetic conditions. He is in the top 5% for SRI and WBI. Over each individual EBV this bull demonstrates quality. He is structurally correct, very quiet and will produce heavy, highly marbled carcasses. His dam is a very fertile, structurally correct 5-year-old cow with 17 registered progeny. Hamilton Park Wagyu 0065 is an ideal dual-purpose sire to produce top quality females in any herd.

PEDFA201MONJIRO J11550

WKSFM0164WORLD K'S MICHIFUKU

PEDFA215MICHIKO J655635

SIRE SMOFF0154SUMO CATTLE CO MICHIFUKU F154

IMUFR3258TF TERUTANI 40/1 (IMP USA)

SMOFC0016SUMO CATTLE CO TANI C016

IMUFR3256TF HIKOHIME 34/3 (IMP USA)

IMJFAJ2351HIRASHIGETAYASU J2351 HONGEN (IMP JAP)

GINFB0901GINJO MARBLEMAX HIRANAMI B901

GINFZ0158GINJO F Z158

DAM PMGFL0065PEPPERMILL GROVE L0065

IMJFAJ2810KITATERUYASUDO J2810 HONGEN (IMP JAP)

PMGFD0203PEPPERMILL GROVE D203

BYWFW0176BLACKMORE AIZAKURA W176

**LOT 25 HAMILTON PARK WAGYU MICHIFUKU 0518****COHORT 1**

GL	BW	200	400	600	MCW	MILK	CWt	EMA	RUMP	RBV	MS	MF	WBI	SRI	FTI	FII
-1.2	-0.6	0	3	5	12	3	11	4.1	1	-1.1	2.5	0.42	198	231	225	228
65%	74%	73%	72%	72%	66%	65%	69%	63%	64%	56%	65%	58%	JULY 2022 WAGYU GROUP BREEDPLAN			

REGO NO. HPWFP0518
DOB 20/6/18
COLOUR BLACK

SIRE OWNER HAMILTON PARK PASTORAL COMPANY
GRADE FULLBLOOD
BLOOD 100%

GENETIC CONDITIONS B3F, CHSF, CL16FU, F11C, IARSF
EXPORT STATUS Australia only

SIRE OWNER COMMENTS

Hamilton Park Wagyu Michifuku 0518 is a new generation genomically enhanced sire, with a pedigree packed with all the golden oldies. He is an early maturing bull flaunting EBV'S in the top 1% for Marble Fineness and the top 5% for MS – P0518 will not disappoint. His dam has produced 34 high marbling progeny.

PEDFA201MONJIRO J11550

WKSFM0164WORLD K'S MICHIFUKU

PEDFA215MICHIKO J655635

SIRE SMOFF0126SUMO CATTLE CO MICHIFUKU F126

IMUFN2294TF ITOHANA 2 (IMP USA)

SMOFC0152SUMO CATTLE CO HANA C152

SUMFU2208SUMO MICHIFUKU U2208

PEDFA10632SHIGESHIGENAMI J10632

IMUFQTF148ITOSHIGENAMI (IMP USA)

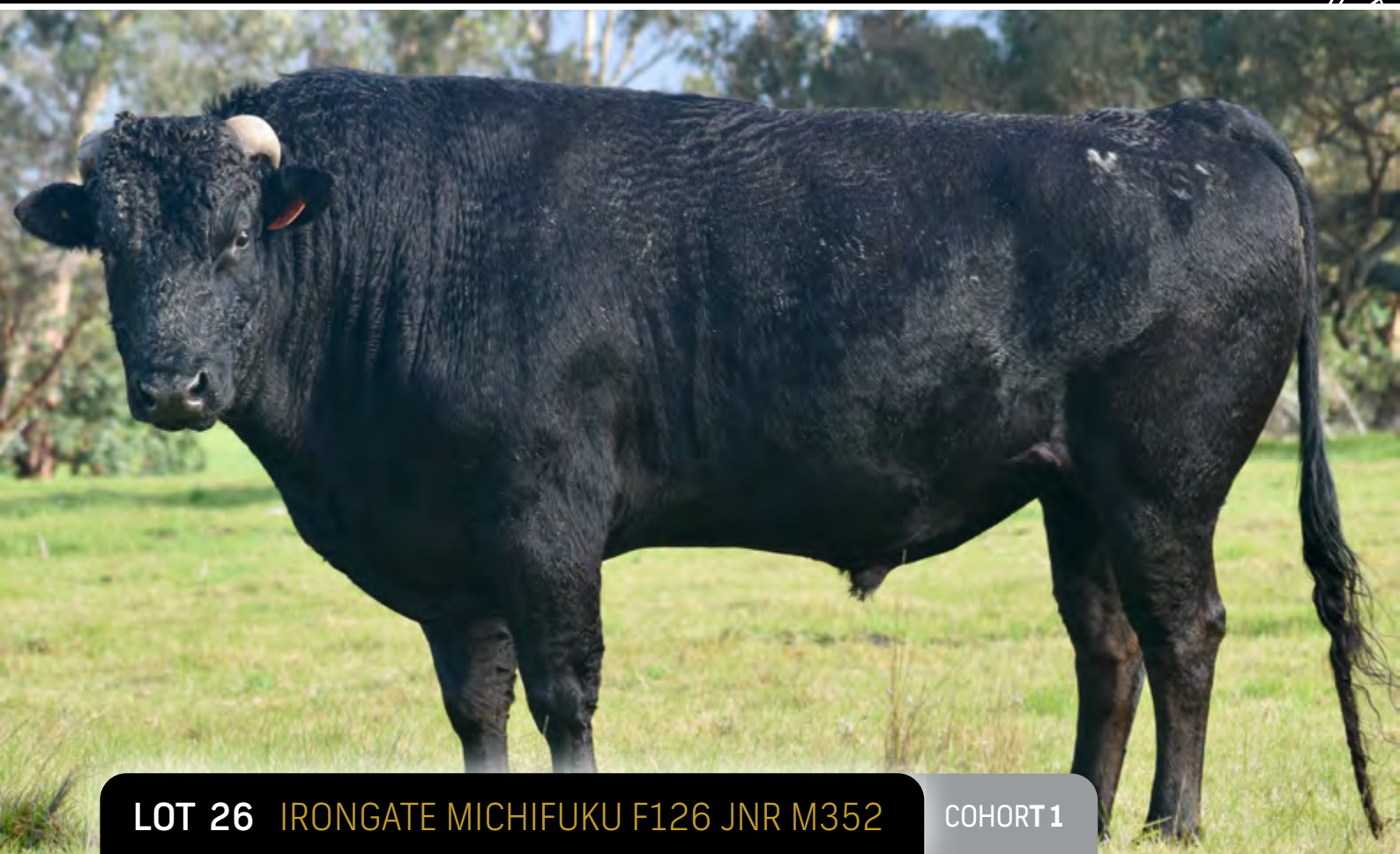
PEDFA661FUKUYUKI

DAM PMGFG0002PEPPERMILL GROVE G002

IMUFN2294TF ITOHANA 2 (IMP USA)

BYWFW0143BLACKMORE FUKUTOMI W143

TWAFU0526TWA SEISHEN

**LOT 26 IRONGATE MICHIFUKU F126 JNR M352****COHORT 1**

GL	BW	200	400	600	MCW	MILK	CWt	EMA	RUMP	RBV	MS	MF	WBI	SRI	FTI	FII
-3.3	0.1	12	21	20	12	7	29	3.2	0.5	0.1	2	0.36	219	230	211	203
94%	97%	96%	96%	96%	81%	68%	82%	70%	72%	65%	70%	61%	JULY 2022 WAGYU GROUP BREEDPLAN			

REGO NO. IGWFM0352
DOB 24/11/16
COLOUR BLACK

SIRE OWNER IRONGATE WAGYU
GRADE FULLBLOOD
BLOOD 100%

GENETIC CONDITIONS **B3F, CHSF, CL16F, F11F, IARSFU**
EXPORT STATUS Australia only

SIRE OWNER COMMENTS

Irongate Michifuku M0352 has sired over 330 AI progeny across multiple herds and is continually utilised for AI matings within the IGW stud herd. M352 holds a long list of strong EBV figures, notably his top 5% MF, super short GL and excellent MILK, as well as some high accuracy early growth EBV's. He is sired by the well-known Sumo Michifuku F126 and has many steer progeny already in the feedlot and awaiting slaughter results. Free from all known genetic conditions.

PEDFA201MONJIRO J11550

WKSFM0164WORLD K'S MICHIFUKU

PEDFA215MICHIKO J655635

SIRE SMOFF0126SUMO CATTLE CO MICHIFUKU F126

IMUFN2294TF ITOHANA 2 (IMP USA)

SMOFC0152SUMO CATTLE CO HANA C152

SUMFU2208SUMO MICHIFUKU U2208

PEDFAJ1742TERUNAGADOI 1742

IMJFAJ2810KITATERUYASUDOI J2810 HONGEN (IMP JAP)

PEDFAJ601124YOSHIMI 3 601124

DAM IGWFE0012IRONGATE WAGYU KITA E012

IMUFQTF148ITOSHIGENAMI (IMP USA)

SUMFW1671SUMO NAMI W1671

IMUFR3259TF DAI 2 KINNTOU 35/3 (IMP USA)

**LOT 27 IRONGATE MICHIFUKU M352 JNR P788****COHORT 1**

GL	BW	200	400	600	MCW	MILK	CWt	EMA	RUMP	RBV	MS	MF	WBI	SRI	FTI	FII
-1.4	-0.1	11	8	7	8	2	10	5.5	2	-0.6	2.1	0.39	220	251	226	226
71%	88%	79%	77%	76%	66%	58%	68%	56%	57%	49%	57%	50%	JULY 2022 WAGYU GROUP BREEDPLAN			

REGO NO. IGWFP0788
DOB 18/10/18
COLOUR BLACK

SIRE OWNER IRONGATE WAGYU
GRADE FULLBLOOD
BLOOD 100%

GENETIC CONDITIONS **B3F, CHSF, CL16F, F11F, IARSF**
EXPORT STATUS Australia only

SIRE OWNER COMMENTS

Irongate Michifuku P0788 is a son of IGWFM0352 with improved EMA. He has some good EBV's to his name, boasting both MS and MF inside the top 5% of the breed. The powerful lines of Michifuku/Itoshigenami which this bull contains in his pedigree have produced high economic value EBV's (EMA, MS, MF), well above mid parent values. Free from all known genetic conditions.

WKSFM0164WORLD K'S MICHIFUKU
SMOFF0126SUMO CATTLE CO MICHIFUKU F126
SMOFC0152SUMO CATTLE CO HANA C152
SIRE IGWFM0352IRONGATE MICHIFUKU F126 JNR M352
IMJFAJ2810KITATERUYASUDO J2810 HONGEN (IMP JAP)
IGWFE0012IRONGATE WAGYU KITA E012
SUMFW1671SUMO NAMI W1671
PEDFA10632SHIGESHIGENAMI J10632
IMUFQTF148ITOSHIGENAMI (IMP USA)
PEDFA661FUKUYUKI
DAM IGWFM0108IRONGATE ITOSHIGENAMI M108
IGWFC0016IRONGATE WAGYU NOMBY ICHIRYUNO C016
IGWFK0198IRONGATE ICHIRYUNO K198
CCOFY0012COATES TANI Y0012

**LOT 28 IRONGATE MICHIFUKU P1002****COHORT 1**

GL	BW	200	400	600	MCW	MILK	CWt	EMA	RUMP	RBV	MS	MF	WBI	SRI	FTI	FII
2.1	2.3	14	27	37	36	-1	29	1.4	0.8	-0.5	1.8	0.33	224	225	194	175
89%	94%	82%	81%	81%	69%	65%	72%	61%	62%	52%	64%	55%	JULY 2022 WAGYU GROUP BREEDPLAN			

REGO NO. IGWFP1002
DOB 14/11/18
COLOUR BLACK

SIRE OWNER IRONGATE WAGYU
GRADE FULLBLOOD
BLOOD 100%

GENETIC CONDITIONS **B3F, CHSF, CL16F, F11F, IARSF**
EXPORT STATUS Australia only

SIRE OWNER COMMENTS

Irongate Michifuku P1002 is sired by Sumo Michifuku F154. He has some admirable EBV data to his name boasting some excellent carcass weight EBV's. IGWFP1002 has been selected for his CWT, EMA, MS, MF which are well above mid parent values. He is therefore displaying genetic potential that will be proven through the Progeny Testing Program. Free from all known genetic conditions.

PEDFA201MONJIRO J11550

WKSFM0164WORLD K'S MICHIFUKU

PEDFA215MICHIKO J655635

SIRE SMOFF0154SUMO CATTLE CO MICHIFUKU F154

IMUFR3258TF TERUTANI 40/1 (IMP USA)

SMOFC0016SUMO CATTLE CO TANI C016

IMUFR3256TF HIKOHIME 34/3 (IMP USA)

WESFX2046WESTHOLME KIYOYASU

IGWFE0088IRONGATE WAGYU KIYOYASU E088

IGWFB0017IRONGATE WAGYU NAMI B0017

DAM IGWFH0018IRONGATE KIYOYASU H18

IGWFA0004IRONGATE WAGYU ITOSHIGENAMI A0004

IGWFD0032IRONGATE WAGYU KENSEI D032

IGWFB0015IRONGATE WAGYU NAMI B0015



image currently
unavailable

LOT 29 STUD MR NAMI SUZUTANI 325H R325

COHORT 1



GL	BW	200	400	600	MCW	MILK	CWt	EMA	RUMP	RBV	MS	MF	WBI	SRI	FTI	F1I
0	0.1	2	6	1	-1	-3	0	3.7	-2	0.5	2.1	0.27	164	186	170	171
62%	68%	70%	69%	69%	63%	64%	67%	63%	63%	58%	64%	60%	JULY 2022 WAGYU GROUP BREEDPLAN			

REGO NO. KSWFR325
DOB 25/3/20
COLOUR BLACK

SIRE OWNER KENTUCKY STUD WAGYU
GRADE FULLBLOOD
BLOOD 100%

GENETIC CONDITIONS **B3F, CHSF, CL16FU, F11C, IARSF**
EXPORT STATUS Australia & USA

SIRE OWNER COMMENTS

Stud Mr Nami Suzutani 325H is an incredibly well-bred son of Itoshigenami out of a "Brick" solid Suzutani Female. Sporting a sire stack of TF148 Itoshigenami X Shigesheetani X Itozuru doi TF151 back to his maternal family (Suzutani), the Matriarch of the Wagyu Breed, there can be little doubt about the quality of carcasses and progeny he will make. His genomic profile from BREEDPLAN shows exactly that! With MS EBV in the top 5% of the breed and a MF in the top 10%, he will change the way USA breeders utilize FB Wagyu semen to change their herds to Prime + scores. This young bull's Genomics come as no surprise as his family has consistently produced carcasses of the highest BMS scores for us. F11 Carrier, free of all other known genetic conditions.

PEDFAJ6109SHIGEKANENAMI J6109

PEDFA10632SHIGESHIGENAMI J10632

PEDFAJ774695SHIGEMITSU J774695 (FB4751)

SIRE IMUFQTF148ITOSHIGENAMI (IMP USA)

PEDFAJ10756FUKUMASA J10756

PEDFA661FUKUYUKI

PEDFAJ456691YUKIZAKURA J456691

WKSFM0139WORLD K'S HARUKI 2 (FB1614)

WKSFP1593WORLD K'S SHIGESHIGETANI 1593

WKSFL0976WORLD K'S SUZUTANI (FB1617)

DAM USAFB21531SYNERGY SHIG SUZITO

IMUFLT151ITOZURUDOI TF151 (IMP USA)

PEDFB11844STONYRUN ID 151 SUZITO 3

PEDFB6032SUZUTAKA 2



image currently
unavailable

LOT 30 STUD MR NAMI SUZUTANI 327H R327

COHORT 1



GL	BW	200	400	600	MCW	MILK	CWt	EMA	RUMP	RBV	MS	MF	WBI	SRI	FTI	F1I
-1.2	-1.6	0	1	0	5	-5	-6	4.3	-0.8	0.6	1.2	0.16	141	161	126	128
64%	71%	72%	71%	71%	66%	66%	69%	65%	65%	60%	66%	62%	JULY 2022 WAGYU GROUP BREEDPLAN			

REGO NO. KSWFR327
DOB 27/3/20
COLOUR BLACK

SIRE OWNER KENTUCKY STUD WAGYU
GRADE FULLBLOOD
BLOOD 100%

GENETIC CONDITIONS B3F, CHSF, CL16FU, F11F, IARSF
EXPORT STATUS Australia, USA & Canada

SIRE OWNER COMMENTS

Stud Mr Nami Suzutani 327H 327 is a pedigree specimen. He is a direct son of the Great Itoshigenami TF148 who himself sired the number one Bull in the world - Itoshigenami Jr. Itoshigenami Jr semen has previously sold for \$68,000. His maternal grandsire is World K's Shigesigetani, a bull that was thought for generations to be the best, based on his 15K carcasses harvested, 90 % of those grading three full steps above Prime. With modern day genomics now available on Shigesigetani, one can see the opinion was spot on. He is not only documented now for the exceptional carcasses he produces, but also a BREEDPLAN genomic wonder. He is top 1% for GL, top 5% in BW, top percentile in MS and flirts with the breed leader with EMA. Because of these incredible traits he borders on top index numbers in all important categories. Perhaps most importantly, he displays all these traits with a 90%+ accuracy rating due to his volume of evaluated progeny. To 327H's pedigree we add Itozuru doi TF151, well known as the greatest all round sire in the breed. KSWFR327's maternal granddam is World K's Suzutani who is well documented as the greatest female in the breed outside of Japan. The dam of 327 is a top 2% animal for Eye Muscle Area and sits just below the top 5% for Marble Score with a +1.7 EBV. KSWFR327 is free of known genetic conditions.

PEDFAJ6109SHIGEKANENAMI J6109

PEDFA10632SHIGESHIGENAMI J10632

PEDFAJ774695SHIGEMITSU J774695 (FB4751)

SIRE IMUFQTF148ITOSHIGENAMI (IMP USA)

PEDFAJ10756FUKUMASA J10756

PEDFA661FUKUYUKI

PEDFAJ456691YUKIZAKURA J456691

WKSFM0139WORLD K'S HARUKI 2 (FB1614)

WKSFP1593WORLD K'S SHIGESHIGETANI 1593

WKSFL0976WORLD K'S SUZUTANI (FB1617)

DAM USAFB21531SYNERGY SHIG SUZITO

IMUFLTF151ITZURUDOI TF151 (IMP USA)

PEDFB11844STONYRUN ID 151 SUZITO 3

PEDFB6032SUZUTAKA 2

**LOT 31** **MOYHU K00194****COHORT 1**

GL	BW	200	400	600	MCW	MILK	CWt	EMA	RUMP	RBV	MS	MF	WBI	SRI	FTI	FII
3	5.7	29	43	54	53	1	38	1.6	-1.2	1	0.3	0.14	185	151	122	86
69%	84%	79%	78%	78%	72%	71%	75%	69%	70%	65%	70%	66%	JULY 2022 WAGYU GROUP BREEDPLAN			

REGO NO. MOYFK00194
DOB 12/9/14
COLOUR BLACK

SIRE OWNER MOYHU WAGYU
GRADE FULLBLOOD
BLOOD 100%

GENETIC CONDITIONS **B3F, CHSF, CL16FU, F11F, IARSF**
EXPORT STATUS Australia, New Zealand, USA, EU, UK, South
Africa & Canada

SIRE OWNER COMMENTS

Moyhu K00194 is free from all known genetic conditions and was originally bred as an outcross to produce females with a larger frame and good milking ability. Weighing 1052kgs on 17th June 2021, he has length and size with a quiet temperament.

PEDFAJ7212KEDAKA J7212

PEDFAJ287DAI 20 HIRASHIGE J287

PEDFAJ1137022DAI 13 HIRASHIGE J1137022

SIRE **IMJFAJ2351HIRASHIGETAYASU J2351 HONGEN (IMP JAP)**

PEDFAJ157TAYASUFUKU J157

PEDFAJ187250DAI 5 YURUHIME J187250

PEDFAJ28677YURIKO J28677

PEDFAJ1555ITOHIRASHIGE J1555

IMJFAJ2703ITOMORITAKA J2703 HONGEN (IMP JAP)

PEDFAJ565554DAI 6 OEFUJII J565554 - KURO KOH

DAM **MOYFB0454MOYHUF B454**

IMUFQ2599TF YUKIHARUNAMI 4 (IMP USA)

MOYFY0109MOYHU F Y109

TWAFT0491TWA 491

**LOT 32 PUTZ WAGYU BEEF YASUFUKUSTAR****COHORT 1**

GL	BW	200	400	600	MCW	MILK	CWt	EMA	RUMP	RBV	MS	MF	WBI	SRI	FTI	FII
0.9	2.4	18	31	39	31	3	40	4.6	-3.9	1.6	1.3	0.19	219	206	187	163
55%	67%	70%	69%	69%	59%	60%	65%	57%	58%	50%	59%	52%	JULY 2022 WAGYU GROUP BREEDPLAN			

REGO NO. PWAFF7298
DOB 23/2/18
COLOUR BLACK

SIRE OWNER PUTZ WAGYU BEEF
GRADE FULLBLOOD
BLOOD 100%

GENETIC CONDITIONS **B3F, CHSF, CL16F, F11F, IARSF**
EXPORT STATUS EU and Australia

SIRE OWNER COMMENTS

Before knowing his genomic EBV's, Putz Wagyu Beef Yasufukustar drew attention by his sheer proportions. His deep chest, very strong forequarter and tall frame are exceptional. Weighing 730kg in breeding condition highlights this perfectly. His pedigree with Yasufuku Jnr. as paternal grandsire and very rare maternal line going back to Reiko gives endless breeding opportunities with today's high performance Fullbloods.

PEDFAJ930YASUFUKU J930

WKSFS0100WORLD K'S YASUFUKU JR (FB5061)

PEDFQ5KANEKO 5

SIRE PEDFB7370CHR YASUFUKU 246T

IMJFAJ2810KITATERUYASUDO J2810 HONGEN (IMP JAP)

PEDFB4830CHR MS KITATERU 59J

PEDFR006CHR KIKUHANAHIME 006F

IMJFAJ2351HIRASHIGETAYASU J2351 HONGEN (IMP JAP)

WESFZ0278WESTHOLME HIRASHIGETAYASU Z278

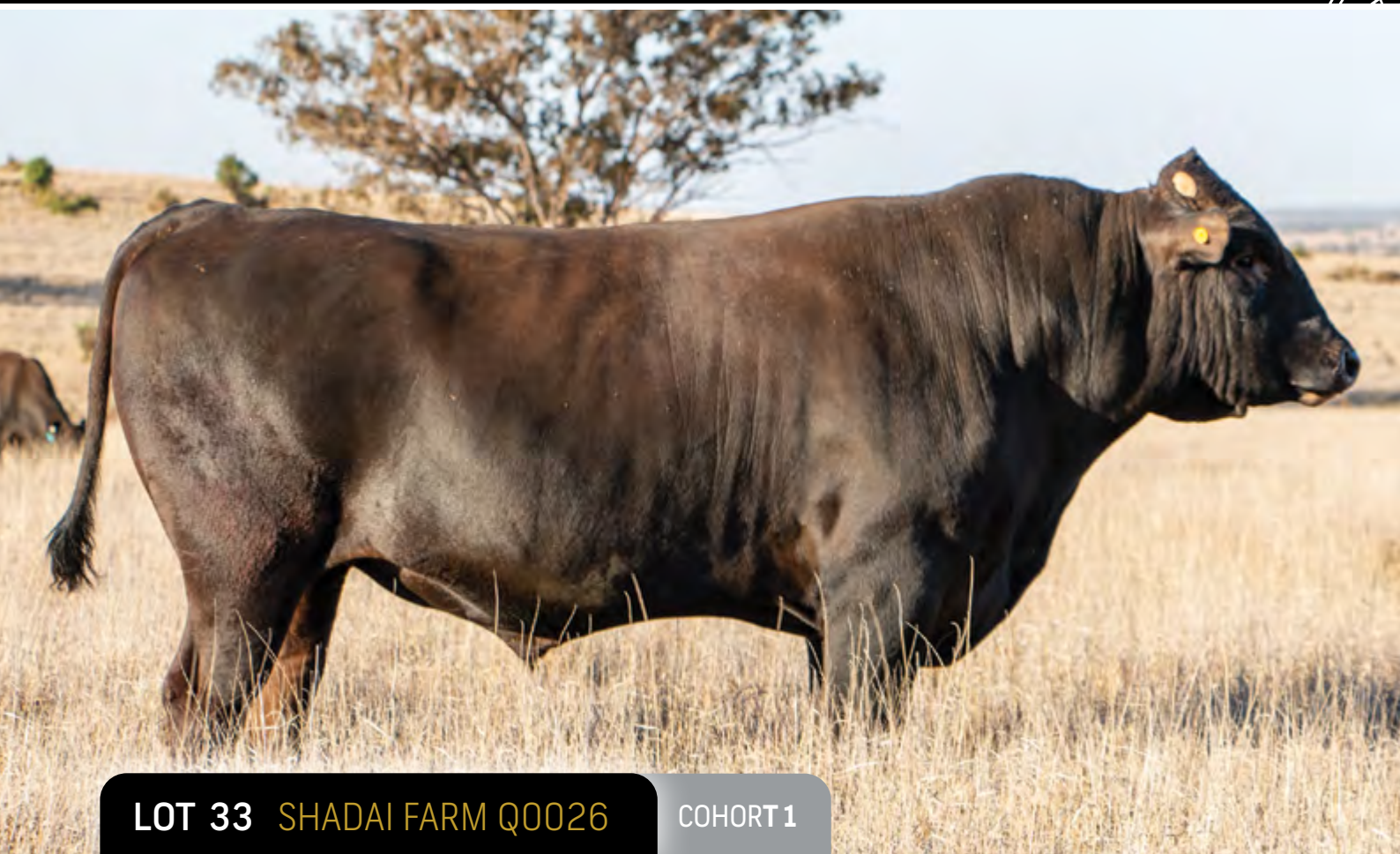
WESFX0106WESTHOLME OHYURIHIME

DAM PEDFB125272+KZEKAORU 62J

PEDFB5256CHR HIRASHIGE 081L

PEDFB71972+K KAORU 01

PEDFB6453MS ASUKA 304 FB6453

**LOT 33 SHADAI FARM Q0026****COHORT 1**

GL	BW	200	400	600	MCW	MILK	CWt	EMA	RUMP	RBV	MS	MF	WBI	SRI	FTI	F1I
-1.2	-0.5	6	16	25	30	1	23	3.7	-0.1	-0.1	2.7	0.37	264	285	251	241
84%	74%	77%	74%	74%	66%	66%	71%	63%	65%	56%	67%	59%	JULY 2022 WAGYU GROUP BREEDPLAN			

REGO NO. SFWFQ0026
DOB 23/3/19
COLOUR BLACK

SIRE OWNER AUSTRALIAN COUNTRY CHOICE PROPERTIES
GRADE FULLBLOOD
BLOOD 100%

GENETIC CONDITIONS **B3F, CHSF, CL16FU, F11F, IARSF**
EXPORT STATUS Australia, New Zealand, USA, EU, UK,
South Africa & Canada

SIRE OWNER COMMENTS

Shadai Farm Q0026 is an evenly balanced, young sire in both weight gain and meat quality.

He inherits maternal strength from two elite Terutani 40/1 daughters on both sides of his pedigree, whilst the well-established Michifuku / Itoshigenami cross ensures carcass profitability.

Descending from Takeda's Kensei family, Q0026 was used as a yearling and his calves display the same standout temperament and precociousness as their sire.

Suitable for use over heifers, free from all known genetic conditions.

PEDFA201MONJIRO J11550

WKSFM0164WORLD K'S MICHIFUKU

PEDFA215MICHIKO J655635

SIRE SMOFF0154SUMO CATTLE CO MICHIFUKU F154

IMUFR3258TF TERUTANI 40/1 (IMP USA)

SMOFC0016SUMO CATTLE CO TANI C016

IMUFR3256TF HIKOHIME 34/3 (IMP USA)

PEDFA10632SHIGESHIGENAMI J10632

IMUFQTF148ITOSHIGENAMI (IMP USA)

PEDFA661FUKUYUKI

DAM SFWFC0006SHADAI FARM KENSEI C0006

IMUFR3258TF TERUTANI 40/1 (IMP USA)

SFWFY0159SHADAI FARM KENSEI 1/159

SUMFT0834SUMO MICHIT834

LOT 34 WITHDRAWN

GL	BW	200	400	600	MCW	MILK	CWt	EMA	RUMP	RBY	MS	MF	WBI	SRI	FTI	F1I

JULY 2022 WAGYU GROUP BREEDPLAN

Launched in 2021, the first joinings for the nationally and internationally recognised AWA-PTP have now been completed. The AWA-PTP program is set to continue for ten years and seven breeding cycles.



“ We’ll be able to test the best breeding for these high performance traits in these sires that are going to come through and see how well their progeny performs ...

Dr Matt McDonagh
Australian Wagyu Association, CEO

**LOT 35 SYNERGY TF148 SUZUTANI 533G ET****COHORT 1**

GL	BW	200	400	600	MCW	MILK	CWt	EMA	RUMP	RBV	MS	MF	WBI	SRI	FTI	FII
0.3	-0.3	6	10	1	1	-4	6	4.7	0.1	0.3	1.8	0.33	195	222	183	184
62%	68%	70%	69%	69%	63%	64%	67%	63%	63%	59%	64%	61%	JULY 2022 WAGYU GROUP BREEDPLAN			

REGO NO. SYNFAQ533
DOB 9/10/19
COLOUR BLACK

SIRE OWNER SYNERGY WAGYU L L C
GRADE FULLBLOOD
BLOOD 100%

GENETIC CONDITIONS B3FU, CHSFU, CL16FU, F1150%, **IARSF**
EXPORT STATUS Australia, USA & Canada

SIRE OWNER COMMENTS

Synergy TF148 Suzutani 533G ET is an elite pedigreed son of Itoshigenami TF148 and from the Suzutani maternal line. He boasts an incredible sire stack of TF148 x Michifuku x TF151 x Takazakura (Shikikan's full sister) x Suzutani! He is on a short list of impressive company, including Mayura Itoshigenami JNR, as one of only six TF148 sons to have over a 1.8 MS, 4.7 EMA, and 0.33 MF and 0.40 MF.

PEDFAJ6109SHIGEKANENAMI J6109

PEDFA10632SHIGESHIGENAMI J10632

PEDFAJ774695SHIGEMITSU J774695 (FB4751)

SIRE IMUFQTF148ITOSHIGENAMI (IMP USA)

PEDFAJ10756FUKUMASA J10756

PEDFA661FUKUYUKI

PEDFAJ456691YUKIZAKURA J456691

PEDFA201MONJIRO J11550

WKSFM0164WORLD K'S MICHIFUKU

PEDFA215MICHICO J655635

DAM SYNFM158SYNERGY SYN MICH SUZI 158D

IMUFLT151ITOZURUDOI TF151 (IMP USA)

PEDFB11844STONYRUN ID 151 SUZITO 3

PEDFB6032SUZUTAKA 2

**LOT 36 SYNERGY MICH SUZUTANI 87Q****COHORT 1**

GL	BW	200	400	600	MCW	MILK	CWt	EMA	RUMP	RBV	MS	MF	WBI	SRI	FTI	FII
0.6	-0.6	2	8	7	16	-5	5	6.5	1.7	0.1	2.2	0.37	238	272	222	222
61%	67%	69%	68%	69%	63%	64%	66%	62%	63%	58%	63%	60%	JULY 2022 WAGYU GROUP BREEDPLAN			

REGO NO. SYNFAQ87
DOB 10/11/19
COLOUR BLACK

SIRE OWNER SYNERGY WAGYU L L C
GRADE FULLBLOOD
BLOOD 100%

GENETIC CONDITIONS B3FU, CHSFU, CL16FU, F116%, IARSFU
EXPORT STATUS Australia, USA & Canada

SIRE OWNER COMMENTS

Synergy Mich Suzutani 87Q is a high marbling and carcass trait son of World K's Michifuku from the Suzutani maternal line. He is one of only 2 Michifuku sons over 2.0 MS and 6.5 EMA. He has an impressive sire stack of Michifuku x TF148 x Shigesigetani x TF151 x Takazakura (Shikikan's full sister) x Suzutani. At \$272 Self Replacing Index, at time of publishing he is the 4th highest SRI son of Michifuku.

PEDFAJ10328YASUMIDOI J10328

PEDFA201MONJIRO J11550

PEDFA203HARUMI J1086409

SIRE WKSFM0164WORLD K'S MICHIFUKU

PEDFA211TANISHIGE 1526 - KURO KOH

PEDFA215MICHIKO J655635

PEDFA216MICHIFUKU J494290

PEDFA10632SHIGESHIGENAMI J10632

IMUFQTF148ITOSHIGENAMI (IMP USA)

PEDFA661FUKUYUKI

DAM SYNFN50SYNERGY 148 SUZU 50E ET

WKSFP1593WORLD K'S SHIGESHIGETANI 1593

USAFB21531SYNERGY SHIG SUZITO

PEDFB11844STONYRUN ID 151 SUZITO 3

Percentile bands for 2020 born Wagyu calves

For benchmarking, the average Wagyu BREEDPLAN EBVs for the 2020 born calves are tabled.

	GL	BW	200	400	600	MCW	MILK	SS	CWt	EMA	RUMP	RBY	MS	MF	WBI	SRI	FTI	FII
TOP 1%	-2.8	-2.9	+34	+52	+70	+74	+8	+2	+57	+7.4	+4.2	+1.7	+2.6	+0.41	+279	+276	+240	+226
TOP 5%	-1.9	-1.7	+24	+40	+55	+57	+6	+1.2	+44	+5.7	+3	+1.2	+2.1	+0.33	+240	+238	+204	+191
TOP 10%	-1.5	-1.1	+21	+34	+47	+48	+5	+0.8	+38	+4.7	+2.3	+1	+1.9	+0.3	+220	+217	+184	+173
TOP 15%	-1.2	-0.7	+18	+30	+41	+43	+4	+0.6	+33	+4.2	+1.8	+0.8	+1.7	+0.27	+205	+203	+172	+160
TOP 20%	-1	-0.4	+16	+27	+37	+38	+3	+0.4	+30	+3.7	+1.5	+0.7	+1.5	+0.25	+194	+192	+163	+151
TOP 25%	-0.8	-0.1	+15	+25	+34	+35	+2	+0.3	+27	+3.3	+1.2	+0.6	+1.4	+0.23	+184	+183	+154	+143
TOP 30%	-0.6	+0.1	+14	+23	+31	+31	+2	+0.1	+24	+2.9	+0.9	+0.5	+1.3	+0.21	+176	+174	+147	+136
TOP 35%	-0.4	+0.3	+13	+21	+28	+28	+2	+0	+22	+2.6	+0.7	+0.4	+1.2	+0.2	+168	+167	+140	+130
TOP 40%	-0.3	+0.5	+11	+19	+25	+25	+1	-0.1	+20	+2.3	+0.4	+0.3	+1.1	+0.19	+161	+160	+134	+124
TOP 45%	-0.2	+0.8	+10	+17	+23	+23	+1	-0.2	+18	+2	+0.2	+0.2	+1	+0.17	+154	+153	+129	+118
TOP 50%	-0.1	+1	+9	+16	+21	+20	+0	-0.3	+15	+1.7	+0	+0.1	+1	+0.16	+148	+147	+124	+113
TOP 55%	+0.1	+1.2	+8	+14	+18	+18	+0	-0.4	+13	+1.4	-0.3	+0	+0.9	+0.15	+141	+141	+118	+108
TOP 60%	+0.2	+1.4	+7	+13	+16	+15	-1	-0.5	+11	+1.1	-0.5	-0.1	+0.8	+0.14	+135	+135	+113	+103
TOP 65%	+0.3	+1.6	+6	+11	+14	+13	-1	-0.6	+9	+0.8	-0.7	-0.2	+0.7	+0.12	+129	+129	+108	+97
TOP 70%	+0.4	+1.8	+5	+9	+11	+10	-2	-0.7	+7	+0.5	-1	-0.3	+0.6	+0.11	+122	+123	+102	+91
TOP 75%	+0.6	+2.1	+4	+7	+8	+7	-2	-0.8	+5	+0.2	-1.3	-0.4	+0.5	+0.09	+115	+115	+97	+85
TOP 80%	+0.7	+2.4	+3	+5	+6	+4	-3	-0.9	+2	-0.2	-1.6	-0.5	+0.4	+0.08	+107	+107	+89	+78
TOP 85%	+0.9	+2.8	+1	+3	+2	+0	-3	-1.1	-1	-0.7	-2	-0.6	+0.3	+0.06	+97	+98	+81	+70
TOP 90%	+1.2	+3.3	-1	-1	-3	-5	-4	-1.3	-5	-1.3	-2.5	-0.8	+0.1	+0.03	+85	+87	+71	+60
TOP 95%	+1.5	+4	-4	-5	-10	-13	-5	-1.5	-11	-2.3	-3.1	-1	-0.1	-0.01	+65	+69	+56	+44
TOP 99%	+2.3	+5.4	-9	-15	-22	-28	-8	-2	-22	-3.8	-4.3	-1.5	-0.6	-0.1	+30	+34	+26	+14
Low Value	+4.1	+14.9	-24	-38	-63	-61	-12	-3.2	-49	-7.6	-7.6	-2.5	-1.6	-0.28	-69	-48	-47	-63

IMPORTANT NOTICE

It is very important that you appreciate when viewing the AWA database that the information contained on the AWA database, including but not limited to pedigree, DNA information, Estimated Breeding Values (EBVs) and Index values, is based on data supplied by members and/or third parties. Whilst every effort is made to ensure the accuracy of the information reported through AWA, AWA officers and employees assume no responsibility for its content, use or interpretation. AWA disclaims all liability (including without limitation, liability in negligence) for all expenses, losses, damages and costs you may incur as a result of the use by you of the data on this AWA database and the information supplied by ABRI and AGBU being inaccurate or incomplete in any way for any reason.

Regarding EBVs and Index values, it is very important to appreciate, and you need to be aware that:

- » EBVs are derived using Wagyu Single-Step BREEDPLAN technology developed independently by the Animal Genetics and Breeding Unit (AGBU), using the information contained within the AWA database.
- » AGBU is a joint venture of NSW Department of Primary Industries and the University of New England, which receives funding for this purpose from Meat and Livestock Australia Limited.
- » AWA relies solely on advice provided by AGBU and ABRI in accepting Wagyu Single-Step BREEDPLAN software.
- » EBVs published in Wagyu Single-Step BREEDPLAN are estimates of genetic potential of individual animals and may not reflect the raw animal phenotype.
- » EBVs can only be directly compared to other EBVs

calculated in the same monthly Wagyu Group BREEDPLAN analysis.

Regarding pedigree and DNA testing results submitted to the AWA, it is very important to appreciate, and you need to be aware that:

- » Pedigree and DNA data submitted and supplied to AWA may have errors in it which cannot be detected without further DNA testing.
- » Technology may have advanced since a particular test was undertaken so that previous inaccuracies which were not detectable are now able to be detected by current testing technology.
- » AWA estimates that less than 1% of the pedigree entries, ownership or breeding details in the AWA Herdbook may have errors or which may be misleading. For this reason, users ought to consider if they need to obtain independent testing of the relevant animal (if possible) to ensure that the data is accurate.

Regarding prefectural content, it is very important to appreciate, and you need to be aware that:

- » Prefectural content is based on the estimation of prefectural origin from Japanese breeding records of 201 foundation sires and 168 foundation dams. As genotype-based parent verification is not used in Japan, and full Japanese registration certificates are not available for all foundation animals, exact prefectural composition for these sires and dams cannot be validated.
- » The calculation of prefectural content for Australian Herdbook animals relies on the accuracy of pedigree records and DNA samples provided by AWA members.
- » The reporting of prefectural content for animals within the AWA Herdbook relies on the calculation provided by ABRI.

If you consider that you do not understand or appreciate the nature and extent of the data provided on this website or the EBVs of a particular animal, then AWA strongly recommends that you seek independent expert advice.

Wagyu BREEDPLAN EBVs

WAGYU BreedObject \$INDEXES

BreedObject \$Indexes, which utilise Wagyu BREEDPLAN EBVs, are now available and allows selection of Wagyu seedstock based on profitability for different commercial production systems. Four Wagyu BreedObject \$Indexes have been developed to date:

Self-replacing Breeding \$Index (SRI)

Wagyu Breeder \$Index (WBI)

Wagyu Fullblood Terminal \$Index (FTI)

Wagyu F1 Terminal \$Index (F1I)

Each of the \$Indexes are targeted specifically to a defined Wagyu production and market scenario and producers should identify and use the index that best suits their purpose. It is not appropriate to compare index values of different \$Indexes as they are based on different production model assumptions. It is not the index with the highest \$ value that you should use, it is the index that best reflects your production system.

BreedObject \$Indexes target economic breeding objectives based on average herd and market conditions and have generally targeted the main markets within the main production systems, combining genetic information within BREEDPLAN into one EBV for each \$Index that considers production costs and realised value.



Self-replacing Breeding Index (SRI)

The Self-replacing Index can be used to select Fullblood bulls that will produce more profitable females when these are retained in Fullblood or Purebred herds, in addition to profitable slaughter progeny.

The SRI estimates the genetic differences between animals in terms of net profitability per cow joined for production of replacement females and slaughter steers to a carcass weight of 435kg at 32 months of age and a 385kg carcass from surplus heifers at 29 months of age. In terms of relative economic importance, the SRI places the following emphasis on these main traits: 41% on marble score (MS); 14% on Residual Feed Intake (RFI) feedlot; 12% on sale liveweight (which will reflect the growth potential and therefore carcass weight of an animal); 9% on meat yield; 6% on dressing percentage and 23.5% placed on other cow and calf traits.

Wagyu Breeder Index (WBI)

The Wagyu Breeder Index estimates the genetic differences between animals in net profitability per cow joined in a commercial Fullblood or Purebred self-replacing herd that has a low-input, grass-based production system. Heifers are retained for breeding and steers and surplus females are sold as feeders for feedlot finishing.

Steers are assumed to be slaughtered at 32 months after 550 days of feedlot finishing targeting 460kg carcasses.

Heifers are retained for breeding and therefore maternal traits are of importance. Marbling is targeted at breed average with optimised growth.

In terms of relative economic importance, the WBI places the following emphasis on these main traits: 37% on marble score (MS); 12% on sale liveweight; 9% on meat yield; 7% on dressing percentage and 13% placed on other cow and calf traits.

Fullblood Terminal Index (FTI)

The Fullblood Terminal Index has an increased weighting on the Marble Score EBV and can be used to select bulls to produce profitable slaughter progeny where none are retained for breeding.

The FTI estimates the genetic differences between animals in terms of net profitability per cow joined based on production of slaughter stock only, with a 435kg carcass from steers at 32 months of age and a 385kg carcass from heifers at 29 months of age. In terms of relative economic importance, the FTI places the following emphasis on these main traits: 64% on MS; 11% on Residual Feed Intake (RFI) feedlot; 9% on sale liveweight; 7% on meat yield; 5% on dressing percentage and 3% placed on other young animal traits and 0% on maternal traits.

F1 Terminal Index (F1I)

The F1 Terminal Index has an increased weighting on the Marble Score EBV and can be used to select bulls to produce profitable F1 slaughter progeny where none are retained for breeding.

The F1 Index estimates the genetic differences between animals in terms of net profitability per cow joined based on production of a 420kg carcass from steers and a 387kg carcass from heifers at 28 months of age. In terms of relative economic importance, the F1 Index places the following emphasis on these main traits: 68% on MS; 9% on Residual Feed Intake (RFI) feedlot; 4% on sale liveweight; 6% on meat yield; 4% on dressing percentage and 9% placed on other young animal traits and 0% on maternal traits.

Genetic conditions

GENETIC CONDITIONS IN WAGYU CATTLE

All breeds of cattle, have undesirable genetic conditions. Fortunately, advances in molecular genetics have facilitated the development of DNA tests for the conditions which enable them to be managed. Breed societies are at the forefront of developing strategies to manage undesirable genetic conditions and seedstock members are leading the industry with their uptake of this technology.

KNOWN GENETIC CONDITIONS OF WAGYU:

SPHEROCYTOSIS (B3) - Cattle that are homozygous (two copies of the recessive allele) have pernicious anaemia (bleeding caused by the abnormal red blood cells). Death normally occurs within the first seven days after birth. Some cases live to adulthood but there is a severe retardation in growth.

CHEDIAK HIGASHI SYNDROME (CHS) - Cattle that are homozygous (two copies of the recessive allele) have a reduced immune response to disease which reduces their ability to resist bacterial infection. Blood is slow to coagulate so often the first indicator is unusual umbilical cord bleeding at calving. Cattle with this syndrome often have an unusually pale coat colour.

CLAUDIN 16 DEFICIENCY (CL16) - Cattle that are homozygous (two copies of the recessive allele) have terminal kidney failure and the onset can occur any time from late adolescence. Cattle are unlikely to live more than six years.

FACTOR XI DEFICIENCY (F11) - Cattle that are homozygous (two copies of the recessive allele) show prolonged bleeding time after castration or dehorning. It is also possible that Carrier x Carrier matings have increased difficulty producing viable fertilised embryos or full term pregnancies and may be repeat (return to cycle) breeders.

NOTE - This is generally a non-lethal recessive condition with affected animals being able to live as normal. This Australian Wagyu population has a high frequency of F11 carriers, which makes it an important genetic condition to manage.

IARS DISORDER - Also known as perinatal weak calf syndrome, the disorder results in death within the last few weeks of gestation or few days of life. A mutation in the IARS gene (isoleucyl-tRNA synthetase) causes a reduction in activity of the enzyme for protein synthesis for a developing embryo and newborns. Calves affected by this disorder exhibit anaemia, depression, weakness, variable body temperature, difficulty nursing, growth retardation, and increased susceptibility to infection.

Carriers of genetic conditions may be useful in Terminal breeding programs where all the progeny are slaughtered and not used for breeding purposes.

For more information about the inheritance and management of genetic conditions visit

website  wagyu.org.au

CODE EXPLANATION

The first two, three or four characters vary with the genetic condition ie. B3, CHS, CL16, F11, F13 or IARS

__F Indicates that the sample submitted for this animal **has been tested** and found to be **FREE** of the causative mutation responsible for the indicated genetic condition. This animal is homozygous free, meaning that it has two copies of the normal variant (or allele) of the gene.

Shown in **GREEN** in the lot listing within the catalogue.

__C Indicates that the sample submitted for this animal **has been tested** and found to be a **CARRIER** of the causative mutation responsible for the indicated genetic condition. This animal is heterozygous for the mutation, meaning that it has one mutant allele and one normal allele. This animal could pass the mutation to approximately half of its progeny.

___% Indicates that, based on pedigree information supplied by the breeder of the animal, the animal **has a chance to be a carrier** of the mutation responsible for the indicated genetic condition but **HAS NOT BEEN TESTED**. The higher the indicated percentage, the larger the chance the animal may be a carrier

__FU Indicates that, based on pedigree information supplied by the breeder of the animal, the animal is **expected to be free** of the mutation responsible for the indicated genetic condition. However, this animal **HAS NOT BEEN TESTED** for the causative mutation and the AWA gives no guarantee as to the animal's "free" status.

__A Indicates that the sample submitted for this animal **has been tested** and found to be **AFFECTED** by the genetic condition. This animal is homozygous for the mutation responsible for the genetic condition and has two copies of the mutant variant of the gene.

DISCLAIMER

The Single-Step Wagyu BREEDPLAN analysis software is a Wagyu-specific multi-trait genetic analysis platform developed by the Animal Genetics and Breeding Unit using genomic data in addition to Best Linear Unbiased Prediction analysis of pedigree and performance data.

Single-Step Wagyu BREEDPLAN is licensed through the Agricultural Business Research Institute. EBVs are generated on a monthly basis to capture new genomic and performance data as it is contributed by AWA members.



EBV figures may change as a result of contribution of genomic and performance data by AWA members.



Suite 6, 146 Marsh Street,
Armidale NSW AUSTRALIA 2350

email office@wagyu.org.au

phone 02 8880 7700

www.wagyu.org.au    



Wagyu Worlds Luxury Beef