

AWA-PTP
**2023 WAGYU
SEMEN TENDER**

BIDDING OPENS 7 AUGUST at 8am
CLOSING 14 AUGUST at 10am (AEST)

A COLLECTION OF
NEXT-GENERATION
WAGYU GENETICS

RARE and **HIGH-PERFORMANCE** genetics
SEMEN PACKAGES from **31 PTP sires**





While care has been taken to ensure that information contained in the AWA-PTP Semen Sale catalogue is true and correct at the time of publication, changes in circumstances after the time of publication may impact on the accuracy of this information.

Whilst great care has been taken to list all locations where semen may be exported, the AWA will take no responsibility for the accuracy of information provided to them by other parties for the purpose of compiling this catalogue.

Buyers should be aware that the AWA takes no responsibility for any semen marked Australia only regarding the conditions under which the semen has been collected and stored, animal health treatments or tests conducted prior to the AWA acquiring the semen for the purpose of the AWA-Progeny Test Program.

Buyers of semen are encouraged to undertake their own due diligence with respect to the purchasing of the semen prior to submitting their tender.

CONTENTS

04	CEO welcome
05	How to bid
05	Data driven genetic gains in Wagyu
06	Lot summary information
07	EBV lot summary
12	Cohort 3 - 2023 (Lots 1-9)
21	Cohort 2 - 2022 (Lots 10-23)
35	Cohort 1 - 2021 (Lots 24-31)
42	Percentile bands for 2021 born calves
43	Important notice
44	Wagyu BREEDPLAN EBVs
46	Wagyu genetic conditions

Wagyu Worlds Luxury Beef

All proceeds from the AWA-PTP semen sale are used to fund recording, testing and measurement of traits within the AWA Progeny Test Program. No funds from the AWA-PTP Semen Sale are distributed to owners of the sires.

All AWA members are able to nominate sires for the AWA-PTP under the same standard conditions of entry.





AN IMPRESSIVE COLLECTION OF THE FINEST NEXT GENERATION WAGYU GENETICS

The **2023 AWA-PTP Semen Sale** is the third of the 2021-2031 AWA Progeny Test Program. Participating in the Semen Sale will enable you to secure semen lots that will link your herd to the core genetic improvement program that will drive the future of the global Wagyu sector. In turn, it will increase the linkage of your herd to the AWA-PTP genetic nucleus and allow you to benchmark your herd against the AWA-PTP, including increasing the accuracy of EBVs for your progeny and females in your herd.

On offer will be semen from 9 sires entered in COHORT 3 of the program, with 13 sires from COHORT 2 and 7 sires from COHORT 1. These sires are at the forefront of Wagyu breeding, with many in the top 1% BREEDPLAN EBVs for key traits and the top 1% for Breed \$Indexes. This catalogue includes the latest data and information on each of the sires on offer.

The sale will be held by tender opening on 7 August 2023 at 8 am and closing at 10 am 14 August 2023 (AEST).

The Australian Wagyu Sector is going from strength to strength in terms of the rate of genetic progress for core profitability traits and increases in EBV accuracy. The AWA welcomes participants from around the world to share this unique opportunity to secure the finest of the next-generation Wagyu genetics available outside Japan.

We wish all buyers well with this opportunity to purchase some of the world's best Wagyu genetics linking your herd to the core global reference population.

Kind regards,

Dr Matt McDonagh
Chief Executive Officer
Australian Wagyu Association

Tender information

HOW TO BID?

The AWA-PTP Wagyu Semen Sale will be conducted by the Australian Wagyu Association in conjunction with selling agents Ray White Rural Dalby. There are 31 lots on offer, for sale by Tender.

WHAT IS A SALE BY TENDER?

For some, the Tender process is not a familiar sales method, so here are the basics.

A Sale by Tender invites potential buyers to submit an offer or 'tender' on a lot/s listed for sale. At the closing date specified, all offers will be reviewed and considered by the agent and/or vendor according to conditions and price. Buyers are then notified if their tender was successful or not.

In the case of the AWA - PTP sale, a buyer's success will largely be based on them submitting the most competitive offer. Putting forward your best offer from the get-go is key to success in a sale by Tender.

KEY DATES

TENDERS OPEN 8 am 7 August 2023 (AEST)

TENDERS CLOSE 10 am 14 August 2023 (AEST)

INTERNATIONAL BUYERS

Several lots have semen available for export to different countries across the globe. Please ensure the semen you are wishing to tender for is exportable to your country before submitting your bid.



MORE INFORMATION

SELLING AGENT

David Felsch

Ray White Rural Dalby

phone 0488 993 931



HOW TO BID

A buyer will submit a tender using the Tender Submission Form on the AWA-PTP Semen Sale web page.





Terms and Conditions

wagyu.org.au/wagyusemensale

The following terms will be applicable to the conduct of the tender

1. The Tender Submission period will be from 8am (AEST) Monday 7 August 2023 to 10am (AEST) Monday 14 August 2023
2. In submitting a tender, a buyer acknowledges that they have read all relevant details of each Sire, and all supporting documentation in relation to the Tender process.
3. A buyer will submit a tender using the Tender Submission Form supplied on the AWA website.
4. Several lots have semen available for export to different countries across the globe. It is the buyers responsibility to ensure the semen is exportable to your country before submitting your bid.
5. The Tender Submission Form will include pricing and any other terms the registered buyer wishes to include in their offer.
6. All Tender Submissions must be submitted as a price in Australian Dollars per Straw.
7. Submission price is to EXCLUDE GST.
 - a. GST at a rate of 10% will be added to all tender submission prices.
8. A buyer may submit a tender with an offer price for 5, 10 or 20 straws per Sire.
9. A buyer may submit a tender with an offer price for any number of sires listed.
10. The buyer may not be allocated all nominated sires listed in their submission.
11. A buyer will only be awarded a maximum of 20 straws per Sire.
12. Once submitted, a tender may not be withdrawn or retracted.
13. A buyer may amend their tender during the tender period in the following conditions:
 - a. To increase the offer price on any sire/s
 - b. To apply an offer price to additional sire/s
14. Any buyer who completes a Tender Submission Form shall fulfill the terms of the submission if accepted by the Selling Agent.
15. The Selling Agent has sole discretion in determining any successful tender submissions.
16. Acceptance of any tender will consider both price and additional terms as outlined in the Tender Submission Form.
17. The Selling Agent is not obligated to accept any offer made via tender.
18. Upon acceptance of a tender, the Selling Agent will issue a Contract of Tender.
19. Where a Tender is accepted, the successful Purchaser will be notified by 5pm AEST Tuesday 15 August 2023.
20. Where a Tender is accepted, it is the Purchaser's responsibility to pay for shipment of material to their nominated Storage Facility and arrange for any insurance to cover the shipment/s.
21. Payment will be made to Ray White Rural Dalby within 7 days as per the terms on the invoice.
22. Should the semen straws for any of the lots be damaged or become not available to the AWA for any reason, buyers with successful Tenders for the affected lots will be notified and all payments will be refunded, with the buyer having no further claim to the straws.
22. Release of straws will not be provided until receipt of payment has been confirmed by The Selling Agent.
23. Registered buyers who submit a Tender that is not accepted, will be notified by email by 5pm (AEST) Tuesday 15 August 2023.

LOT SUMMARY

COHORT 3 2023 COLLECTION

LOTS 1 - 9 (pages 12 - 20)

Lots 1 - 9 represent sires with a diverse range of EBVs and verified pedigrees. These sires will be further proven through the AWA-PTP, allowing buyers access to leading next-generation Sires. Joining's for COHORT 3 sires will commence in September 2023, with data collection on calves to commence in July 2024.

By securing and using COHORT 3 semen sires in the 2023 joining season within your production system, you will create a direct link between your herd and the animals in the AWA-PTP, increasing EBV accuracy within your Wagyu herd.

LIMITED UNITS ARE AVAILABLE a maximum of 100 straws are available for each sire. The tender will be awarded to the most competitive bid.

COHORT 2 2022

LOTS 10 - 23 (pages 21 - 34)

Joining's for Cohort 1 and 2 are complete, and the calves of Cohort 1 are now all registered with the AWA, Cohort 2 sire progeny will be born from July 2023 onwards. Subsequently, the 2021 sires are the first of the PTP to receive high-accuracy EBVs through the data collection of key fertility, growth, and carcass traits on their progeny.

Buyers should consider this a unique opportunity to secure genetics from some of the first sires included in the AWA-PTP, linking your herd to the largest Japanese Black Wagyu reference population.

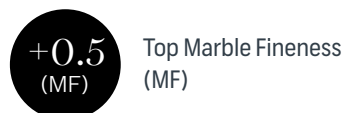
LIMITED UNITS ARE AVAILABLE a limited number of straws available for each sire. The number of packages available vary between sires. The tender will be awarded to the most competitive bid.

COHORT 1 2021

LOTS 24 - 31 (pages 35 - 42)

KEY INSIGHTS AWA-PTP SIRES

Seven Sires which are trait leaders for one or more EBVs





Top 15% F1TI and FTI

Average
\$174
(F1TI)

Average
\$181
(FTI)

EBV LOT SUMMARY

SEE PAGES 12 to 19 for full lot listing

 TOP 1% within a trait / index
 TOP 5% within a trait / index

EKOVALE S0054 (ET)

SIRE OWNER EKOVALE

LOT 1 2023 COHORT 3	GL	BW	200	400	600	MCW	MILK	CWt	EMA	RUMP	RBY	MS	MF	WBI	SRI	FTI	F1I
	1.1	3.1	14	24	31	28	1	22	7	-2.2	0.7	3.1	0.48	304	323	276	259
	65%	70%	72%	70%	69%	63%	64%	67%	63%	64%	52%	65%	57%	WAGYU GROUP BREEDPLAN JUNE 2023 RUN 2			

HP WAGYU T0239 (ET)

SIRE OWNER HP WAGYU

LOT 2 2023 COHORT 3	GL	BW	200	400	600	MCW	MILK	CWt	EMA	RUMP	RBY	MS	MF	WBI	SRI	FTI	F1I
	1.3	0.3	-1	0	1	5	-2	17	-2.6	0.8	-1.5	0.7	0.14	24	33	59	63
	64%	70%	71%	69%	68%	61%	63%	67%	64%	63%	56%	63%	61%	WAGYU GROUP BREEDPLAN JUNE 2023 RUN 2			

LONGFORD 4 (AI) (ET)

SIRE OWNER ACADEMY WAGYU

LOT 3 2023 COHORT 3	GL	BW	200	400	600	MCW	MILK	CWt	EMA	RUMP	RBY	MS	MF	WBI	SRI	FTI	F1I
	-1.7	-1.4	-4	-10	-21	-19	-5	-27	7.9	-0.6	0.8	2	0.32	135	172	153	167
	93%	97%	97%	97%	97%	94%	96%	94%	88%	89%	86%	91%	81%	WAGYU GROUP BREEDPLAN JUNE 2023 RUN 2			

ARUBIAL S1214 (AI) (ET)

SIRE OWNER ARUBIAL PTY LTD

LOT 4 2023 COHORT 3	GL	BW	200	400	600	MCW	MILK	CWt	EMA	RUMP	RBY	MS	MF	WBI	SRI	FTI	F1I
	1.2	-1.1	3	2	3	-2	-4	1	6.1	3.6	-0.3	1.3	0.20	150	176	158	160
	65%	70%	72%	71%	70%	64%	66%	69%	66%	67%	59%	67%	63%	WAGYU GROUP BREEDPLAN JUNE 2023 RUN 2			

SUNNYSIDE S0005 (AI) (ET)

SIRE OWNER RN KRAUSE & CO

LOT 5 2023 COHORT 3	GL	BW	200	400	600	MCW	MILK	CWt	EMA	RUMP	RBY	MS	MF	WBI	SRI	FTI	F1I
	-0.7	-0.4	7	16	28	12	2	30	10.3	-1.6	2.1	2.8	0.36	257	264	249	233
	65%	70%	73%	71%	68%	59%	57%	65%	61%	62%	51%	62%	54%	WAGYU GROUP BREEDPLAN JUNE 2023 RUN 2			

STARTZ HODAN RH07 (ET)

SIRE OWNER STARTZ CATTLE CO

LOT 6 2023 COHORT 3	GL	BW	200	400	600	MCW	MILK	CWt	EMA	RUMP	RBY	MS	MF	WBI	SRI	FTI	F1I
	2	-1.7	-5	-7	-8	-19	-5	-16	6	1.5	0.3	1.2	0.06	107	134	119	126
	58%	67%	69%	67%	65%	56%	57%	64%	60%	58%	47%	58%	54%	WAGYU GROUP BREEDPLAN JUNE 2023 RUN 2			

GERMAN WAGYU GENETIC KAITO (ET)

SIRE OWNER WAGYU-GENETICS

LOT 7 2023 COHORT 3	GL	BW	200	400	600	MCW	MILK	CWt	EMA	RUMP	RBY	MS	MF	WBI	SRI	FTI	F1I	
																		
WAGYU GROUP BREEDPLAN JUNE 2023 RUN 2																		

WSI CELSIOR (ET)

SIRE OWNER REBEL WAGYU

LOT 8 2023 COHORT 3	GL	BW	200	400	600	MCW	MILK	CWt	EMA	RUMP	RBY	MS	MF	WBI	SRI	FTI	F1I
	0	0.2	11	17	16	27	-5	22	4.3	0.5	0.2	2	0.34	229	249	206	200
	60%	66%	68%	65%	64%	55%	55%	62%	58%	58%	45%	59%	51%	WAGYU GROUP BREEDPLAN JUNE 2023 RUN 2			

EBV LOT SUMMARY

SEE PAGES 20 to 27 for full lot listing

TOP 1% within a trait / index
 TOP 5% within a trait / index

YALANDRA R16 (AI) (ET)

SIRE OWNER YALANDRA PASTORAL CO

LOT 9 2023 COHORT 3	GL	BW	200	400	600	MCW	MILK	CWt	EMA	RUMP	RBY	MS	MF	WBI	SRI	FTI	F1I
	2.7	3.2	13	27	37	36	-2	33	3.7	2.6	-0.5	2.2	0.28	252	259	227	207
	67%	71%	73%	70%	68%	60%	59%	65%	59%	60%	48%	60%	54%	WAGYU GROUP BREEDPLAN JUNE 2023 RUN 2			

MACQUARIE WAGYU M0554 (AI) (ET)

SIRE OWNER MACQUARIE WAGYU

LOT 10 2022 COHORT 2	GL	BW	200	400	600	MCW	MILK	CWt	EMA	RUMP	RBY	MS	MF	WBI	SRI	FTI	F1I
	-0.3	-0.6	-1	-3	-7	5	-3	-8	4.9	-6.1	1.5	3	0.44	189	215	187	193
	83%	78%	86%	86%	83%	73%	69%	82%	77%	76%	68%	81%	71%	WAGYU GROUP BREEDPLAN JUNE 2023 RUN 2			

MACQUARIE WAGYU P0006 (ET)

SIRE OWNER MACQUARIE WAGYU

LOT 11 2022 COHORT 2	GL	BW	200	400	600	MCW	MILK	CWt	EMA	RUMP	RBY	MS	MF	WBI	SRI	FTI	F1I
	-2.3	1.9	22	37	48	34	-1	30	1.9	-6.3	2.2	1.3	0.13	218	198	166	136
	76%	83%	83%	79%	78%	69%	67%	76%	72%	72%	63%	75%	65%	WAGYU GROUP BREEDPLAN JUNE 2023 RUN 2			

LENDARLOU HLFKFS009 (AI) (ET)

SIRE OWNER LEONARD & DARREN HENSHELL

LOT 12 2022 COHORT 2	GL	BW	200	400	600	MCW	MILK	CWt	EMA	RUMP	RBY	MS	MF	WBI	SRI	FTI	F1I
	-1.1	1.1	16	25	39	30	2	43	5.8	-1	1.6	1.6	0.28	225	216	189	166
	66%	70%	72%	70%	68%	59%	57%	65%	62%	63%	52%	62%	55%	WAGYU GROUP BREEDPLAN JUNE 2023 RUN 2			

LMR YUKI 9273G (ET)

SIRE OWNER LONE MOUNTAIN CATTLE CO

LOT 13 2022 COHORT 2	GL	BW	200	400	600	MCW	MILK	CWt	EMA	RUMP	RBY	MS	MF	WBI	SRI	FTI	F1I
	-0.9	-0.5	-1	-2	-1	-5	-3	11	4	0.1	-0.7	2.7	0.38	167	203	209	215
	68%	71%	72%	70%	69%	63%	64%	69%	67%	63%	58%	64%	63%	WAGYU GROUP BREEDPLAN JUNE 2023 RUN 2			

LMR SHOGUN 0397H (ET)

SIRE OWNER LONE MOUNTAIN CATTLE CO

LOT 14 2022 COHORT 2	GL	BW	200	400	600	MCW	MILK	CWt	EMA	RUMP	RBY	MS	MF	WBI	SRI	FTI	F1I
	3	-2.6	-11	-19	-29	-24	-4	-9	7	1.1	-0.3	2.8	0.40	128	180	193	215
	66%	71%	72%	70%	70%	65%	65%	70%	68%	66%	60%	67%	65%	WAGYU GROUP BREEDPLAN JUNE 2023 RUN 2			

MOYHU SHIKIYASU 2 (AI) (ET)

SIRE OWNER WAGYU GENETICS VICTORIA PTY LTD

LOT 15 2022 COHORT 2	GL	BW	200	400	600	MCW	MILK	CWt	EMA	RUMP	RBY	MS	MF	WBI	SRI	FTI	F1I
	1.1	1.6	2	3	2	13	-6	-5	4.2	-5.2	1.4	1.6	0.26	125	134	103	100
	67%	81%	75%	74%	74%	68%	65%	70%	66%	67%	58%	67%	62%	WAGYU GROUP BREEDPLAN JUNE 2023 RUN 2			

OLIVE GROVE WAGYU R18 (ET)

SIRE OWNER AOA QLD PTY LTD

LOT 16 2022 COHORT 2	GL	BW	200	400	600	MCW	MILK	CWt	EMA	RUMP	RBY	MS	MF	WBI	SRI	FTI	F1I
	-0.5	5.2	22	40	50	69	-6	51	2.9	-3.6	0.5	2.4	0.50	319	319	245	215
	63%	69%	72%	69%	68%	60%	61%	66%	62%	63%	50%	63%	54%	WAGYU GROUP BREEDPLAN JUNE 2023 RUN 2			

EBV LOT SUMMARY

SEE PAGES 28 to 35 for full lot listing

TOP 1% within a trait / index
 TOP 5% within a trait / index

Q WAGYU FUJI (ET)

SIRE OWNER QUEENSLAND WAGYU

LOT 17 2022 COHORT 2	GL	BW	200	400	600	MCW	MILK	CWt	EMA	RUMP	RBY	MS	MF	WBI	SRI	FTI	F1I
	1.6	-0.3	2	7	7	13	-6	9	0.7	-1.2	-0.1	1.8	0.38	154	172	141	139
	62%	70%	70%	68%	67%	59%	59%	65%	60%	60%	48%	62%	55%	WAGYU GROUP BREEDPLAN JUNE 2023 RUN 2			

RANGER R459H (ET)

SIRE OWNER BRENNER CATTLE COMPANY

LOT 18 2022 COHORT 2	GL	BW	200	400	600	MCW	MILK	CWt	EMA	RUMP	RBY	MS	MF	WBI	SRI	FTI	F1I
	0.3	0.6	11	24	34	31	5	45	8.3	-0.1	1.6	2.2	0.36	240	233	227	207
	65%	71%	71%	69%	68%	60%	59%	67%	63%	60%	51%	61%	57%	WAGYU GROUP BREEDPLAN JUNE 2023 RUN 2			

COOCHIN MICHIFUKU 86

SIRE OWNER TRENTBRIDGE WAGYU STUD

LOT 19 2022 COHORT 2	GL	BW	200	400	600	MCW	MILK	CWt	EMA	RUMP	RBY	MS	MF	WBI	SRI	FTI	F1I
	0.5	4.4	29	39	48	60	-6	41	-1	-1.6	-0.4	2.1	0.43	286	284	221	195
	87%	76%	88%	79%	77%	64%	61%	69%	59%	60%	47%	61%	52%	WAGYU GROUP BREEDPLAN JUNE 2023 RUN 2			

STARTZ TORUKU

SIRE OWNER STARTZ CATTLE CO

LOT 20 2022 COHORT 2	GL	BW	200	400	600	MCW	MILK	CWt	EMA	RUMP	RBY	MS	MF	WBI	SRI	FTI	F1I
	0.1	1	11	20	24	35	-2	24	1.6	-2.7	1.1	1.3	0.21	182	179	136	121
	56%	65%	67%	64%	63%	54%	54%	60%	56%	57%	43%	57%	49%	WAGYU GROUP BREEDPLAN JUNE 2023 RUN 2			

SUNLAND YOI REI R35 (AI) (ET)

SIRE OWNER SUNLAND CATTLE CO

LOT 21 2022 COHORT 2	GL	BW	200	400	600	MCW	MILK	CWt	EMA	RUMP	RBY	MS	MF	WBI	SRI	FTI	F1I
	1.5	-4.3	-10	-20	-34	-41	1	-24	5.1	3.6	-1.1	2.2	0.35	84	136	167	194
	65%	70%	71%	70%	69%	63%	64%	68%	65%	66%	57%	66%	62%	WAGYU GROUP BREEDPLAN JUNE 2023 RUN 2			

SYNERGY TF148 SUZUTANI 533G ET (ET)

SIRE OWNER SYNERGY WAGYU

LOT 22 2022 COHORT 2	GL	BW	200	400	600	MCW	MILK	CWt	EMA	RUMP	RBY	MS	MF	WBI	SRI	FTI	F1I
	-0.3	-1.1	3	5	-2	-5	-5	3	4.8	-0.3	0.5	1.6	0.31	172	199	161	165
	66%	70%	72%	70%	69%	65%	65%	68%	65%	66%	58%	66%	63%	WAGYU GROUP BREEDPLAN JUNE 2023 RUN 2			

SYNERGY MICH SUZUTANI 87Q (AI)

SIRE OWNER SYNERGY WAGYU

LOT 23 2022 COHORT 2	GL	BW	200	400	600	MCW	MILK	CWt	EMA	RUMP	RBY	MS	MF	WBI	SRI	FTI	F1I
	0.7	-1.2	-2	4	-3	7	-7	-3	7.7	1.9	0.3	2	0.36	212	248	203	207
	67%	70%	72%	70%	70%	65%	65%	68%	66%	67%	58%	66%	63%	WAGYU GROUP BREEDPLAN JUNE 2023 RUN 2			

TYDDEWI N3709 (ET)

SIRE OWNER GRASSLANDS WAGYU

LOT 24 2021 COHORT 1	GL	BW	200	400	600	MCW	MILK	CWt	EMA	RUMP	RBY	MS	MF	WBI	SRI	FTI	F1I
	1.2	0.9	14	16	27	26	1	25	2.8	0.1	0.2	2.1	0.29	205	208	188	175
	84%	92%	81%	79%	78%	69%	65%	72%	65%	66%	57%	66%	60%	WAGYU GROUP BREEDPLAN JUNE 2023 RUN 2			

EBV LOT SUMMARY

SEE PAGES 36 to 42 for full lot listing

- TOP 1% within a trait / index
- TOP 5% within a trait / index

HAMILTON PARK WAGYU MICHIFUKU 518 (ET) SIRE OWNER HAMILTON PARK WAGYU

LOT 25 2021 COHORT 1	GL	BW	200	400	600	MCW	MILK	CWt	EMA	RUMP	RBY	MS	MF	WBI	SRI	FTI	F1I
	-1.3	-1.9	-7	-4	-3	1	4	8	5	0.9	-0.9	2.8	0.47	186	225	227	234
	84%	90%	79%	77%	77%	70%	65%	72%	65%	66%	55%	66%	60%	WAGYU GROUP BREEDPLAN JUNE 2023 RUN 2			

HAWKESBURY SHIGESHIGETANI Q0121 (AI) (ET) SIRE OWNER SHADAI WAGYU

LOT 26 2021 COHORT 1	GL	BW	200	400	600	MCW	MILK	CWt	EMA	RUMP	RBY	MS	MF	WBI	SRI	FTI	F1I
	-1.4	0.7	16	17	18	14	-6	12	6.9	-3.3	1.5	2.7	0.35	266	288	240	231
	83%	89%	87%	82%	79%	70%	64%	73%	65%	66%	56%	66%	60%	WAGYU GROUP BREEDPLAN JUNE 2023 RUN 2			

STUD MR NAMI SUZUTANI R325H (AI) SIRE OWNER KENTUCKY STUD WAGYU

LOT 27 2021 COHORT 1	GL	BW	200	400	600	MCW	MILK	CWt	EMA	RUMP	RBY	MS	MF	WBI	SRI	FTI	F1I
	0.5	-1.6	-3	-3	-14	-18	-4	-8	3.5	-1.2	0.3	2.2	0.28	136	170	168	179
	83%	89%	79%	77%	76%	69%	65%	71%	66%	66%	58%	66%	62%	WAGYU GROUP BREEDPLAN JUNE 2023 RUN 2			

STUD MR NAMI SUZUTANI R327H (ET) SIRE OWNER KENTUCKY STUD WAGYU

LOT 28 2021 COHORT 1	GL	BW	200	400	600	MCW	MILK	CWt	EMA	RUMP	RBY	MS	MF	WBI	SRI	FTI	F1I
	-3.0	-3.4	-1	-4	-10	-7	-6	-13	3.2	0.2	0.3	1.0	0.15	107	132	106	115
	83%	89%	79%	77%	77%	70%	65%	71%	66%	67%	59%	67%	63%	WAGYU GROUP BREEDPLAN JUNE 2023 RUN 2			

DOOR KEY Q0102 (AI) (ET) SIRE OWNER DOOR KEY

LOT 29 2021 COHORT 1	GL	BW	200	400	600	MCW	MILK	CWt	EMA	RUMP	RBY	MS	MF	WBI	SRI	FTI	F1I
	1	1.4	11	13	17	19	-2	13	4.6	-0.8	-0.1	3.2	0.43	270	301	263	257
	89%	95%	91%	87%	87%	73%	66%	76%	70%	72%	66%	69%	61%	WAGYU GROUP BREEDPLAN JUNE 2023 RUN 2			

MARATHON MICHIFUKU P0011 (ET) SIRE OWNER MARATHON WAGYU

LOT 30 2021 COHORT 1	GL	BW	200	400	600	MCW	MILK	CWt	EMA	RUMP	RBY	MS	MF	WBI	SRI	FTI	F1I
	-0.1	6.2	27	57	74	76	-2	69	-1	-1	-0.5	2.1	0.37	313	291	252	208
	88%	95%	95%	85%	91%	76%	69%	78%	66%	67%	56%	68%	61%	WAGYU GROUP BREEDPLAN JUNE 2023 RUN 2			

TAKEDA FARM KINUYASU DOI (ET) SIRE OWNER WAGYU SEKAI INC.

LOT 31 2021 COHORT 1	GL	BW	200	400	600	MCW	MILK	CWt	EMA	RUMP	RBY	MS	MF	WBI	SRI	FTI	F1I
	2.8	-0.6	-5	-8	-17	-22	-4	-6	2	1.6	-0.3	0.6	0.09	37	63	55	67
	76%	87%	76%	73%	72%	61%	55%	64%	55%	56%	43%	56%	49%	WAGYU GROUP BREEDPLAN JUNE 2023 RUN 2			

**LOT 1 EKOVALE S0054 (ET)**

COHORT 3



GL	BW	200	400	600	MCW	MILK	CWt	EMA	RUMP	RBY	MS	MF	WBI	SRI	FTI	FII
1.1	3.1	14	24	31	28	1	22	7	-2.2	0.7	3.1	0.48	304	323	276	259
65%	70%	72%	70%	69%	63%	64%	67%	63%	64%	52%	65%	57%	WAGYU GROUP BREEDPLAN JUNE 2023 RUN 2			

REGO NO. BPGFS0054
DOB 26/7/2021
COLOUR BLACK

SIRE OWNER EKOVALE
GRADE FULLBLOOD
BLOOD 100%

GENETIC CONDITIONS **B3F, CHSF, CL16FU, F11C, IARSF**
EXPORT STATUS Australia Only
STORAGE LOCATION BEEF BREEDING SERVICES - WACOL
(current)

SIRE OWNER COMMENTS

100 straws available

Sire owner comments unavailable at the time
of publication.

PEDFA201 MONJIRO J11550

WKSFM0164 WORLD K'S MICHIFUKU

PEDFA215 MICHIKO J655635

SIRE SMOFF0154 SUMO CATTLE CO MICHIFUKU F154

IMUFR3258 TF TERUTANI 40/1 (IMP USA)

SMOFC0016 SUMO CATTLE CO TANI C016

IMUFR3256 TF HIKOHIME 34/3 (IMP USA)

IMUFQTF148 ITOSHIGENAMI (IMP USA)

SUMFX0081 SUMO ITOSHIGENAMI X0081

SUMFT0250 SUMO FUKU T250

DAM CCOFE0422 COATES NAMI E422

CCOFX0093 COATES F X0093

CCOFA0039 COATES NAMI A039

SUMFW1133 SUMO NAMI W1133



image currently unavailable

LOT 2 HP WAGYU T0239 (ET)

COHORT 3



GL	BW	200	400	600	MCW	MILK	CWt	EMA	RUMP	RBV	MS	MF	WBI	SRI	FTI	F1I
1.3	0.3	-1	0	1	5	-2	17	-2.6	0.8	-1.5	0.7	0.14	24	33	59	63
64%	70%	71%	69%	68%	61%	63%	67%	64%	63%	56%	63%	61%	WAGYU GROUP BREEDPLAN JUNE 2023 RUN 2			

REGO NO. HPEF22T0239
DOB 4/1/2022
COLOUR BLACK

SIRE OWNER HP WAGYU
GRADE FULLBLOOD
BLOOD 100%

GENETIC CONDITIONS **B3F, CHSF, CL16F, F11F, IARSF**
EXPORT STATUS Australia Only
STORAGE LOCATION Rocky Repro (current)

SIRE OWNER COMMENTS

100 straws available

Sire owner comments unavailable at the time of publication.

- PEDFAJ65 DAI 7 ITOZAKURA J65
- PEDFAJ1530 KITAGUNI 7-8 J1530
- PEDFAJ81009 KITAGUNI 7 J81009
- SIRE WKSFP0001 WORLD K'S KITAGUNI JR**
- PEDFAJ2132 YUKIFUKU J2132
- WKSFM2893 WORLD K'S NAKAYUKI J13943
- PEDFANAKHANA3 NAKHANA 3 J1792470
- PEDFAJ930 YASUFUKU J930
- WKSFS0100 WORLD K'S YASUFUKU JR (FB5061)
- PEDFQ5 KANEKO 5
- DAM USAFB9685 LL MS YASUFUKU JR 08U**
- WKSFN2892 WORLD K'S TAKAZAKURA
- PEDFB4836 CHR MS TAKAZAKURA 043J
- PEDFB4016 CHR MS KIKUSHIGE 018

**LOT 3 LONGFORD 4 (AI) (ET)****COHORT 3**

GL	BW	200	400	600	MCW	MILK	CWt	EMA	RUMP	RBV	MS	MF	WBI	SRI	FTI	F1I
-1.7	-1.4	-4	-10	-21	-19	-5	-27	7.9	-0.6	0.8	2	0.32	135	172	153	167
93%	97%	97%	97%	97%	94%	96%	94%	88%	89%	86%	91%	81%	WAGYU GROUP BREEDPLAN JUNE 2023 RUN 2			

REGO NO. LDFY0004
DOB 2/3/2003
COLOUR BLACK

SIRE OWNER ACADEMY WAGYU
GRADE FULLBLOOD
BLOOD 100%

GENETIC CONDITIONS **B3F, CHSF, CL16FU, F11FU, IARSFU**
EXPORT STATUS Australia Only
STORAGE LOCATION BEEF BREEDING SERVICES - WACOL
(current)

SIRE OWNER COMMENTS

100 straws available

What an exceptional pedigree for one of the early sires. His dam is a grand daughter of the original Suzutani, a maternal sister to Shigeshigetani and Sanjiro. She was imported in embryo form from Canada by Arthur Dew. Longford 004 has been an exceptional sire born in 2003, sired by ETJ003. Purchased from Longford in 2011. Used heavily in natural service for 8 years, he was incredibly sound, very nice conformation, free walker, beautiful hard feet, lovely slick, fine coat, a good head and extremely quiet. A prolific semen producer, going in and out of the AI stud between his terms of natural service. Unfortunately, put down at 16 years due to the drought, a very sound bull. Y4 is a bull who needs to be correctly used for excellent results. Joined to large framed cows with good milk, I now have females up to 700 kgs with good milk and marbling figures and an exceptional EMA. Y4 is an ideal heifer bull, very light BW and no genetic disorders. Used correctly, a dream bull. You will have his daughters and granddaughters for many years to come.

PEDFAJ10787 KIKUTERU DOI J10787

PEDFAJ1742 TERUNAGADOI 1742

PEDFAJ240580 TERUNAH0 J240580

SIRE IMJFAJ2810 KITATERUYASUDOI J2810 HONGEN (IMP JAP)

PEDFAJ472 YASUTANI DOI J472

PEDFAJ601124 YOSHIMI 3 601124

PEDFAJ206526 YOSHIMI J206526 - KURO IKU

PEDFA201 MONJIRO J11550

WKSFM0164 WORLD K'S MICHIFUKU

PEDFA215 MICHIKO J655635

DAM LDFDFT0480 LONGFORD MUTSU

WKSFM0139 WORLD K'S HARUKI 2 (FB1614)

IMUFP0102 KANADAGENE 102D (IMP USA)

WKSFL0976 WORLD K'S SUZUTANI (FB1617)

**LOT 4 ARUBIAL S1214 (AI) (ET)****COHORT 3**

GL	BW	200	400	600	MCW	MILK	CWt	EMA	RUMP	RBY	MS	MF	WBI	SRI	FTI	FII
1.2	-1.1	3	2	3	-2	-4	1	6.1	3.6	-0.3	1.3	0.20	150	176	158	160
65%	70%	72%	71%	70%	64%	66%	69%	66%	67%	59%	67%	63%	WAGYU GROUP BREEDPLAN JUNE 2023 RUN 2			

REGO NO. MYMFS1214
DOB 1/9/2021
COLOUR BLACK

SIRE OWNER ARUBIAL PTY LTD
GRADE FULLBLOOD
BLOOD 100%

GENETIC CONDITIONS **B3F, CHSF, CL16F, F11F, IARSF**
EXPORT STATUS Australia Only
STORAGE LOCATION BEEF BREEDING SERVICES - WACOL
(current)

SIRE OWNER COMMENTS

100 straws available

Sire owner comments unavailable at the time of publication.

PEDFAJ472 YASUTANI DOI J472

PEDFAJ930 YASUFUKU J930

PEDFM004 CHIZURU 85545

SIRE WKSFS0100 WORLD K'S YASUFUKU JR (FB5061)

PEDFA201 MONJIRO J11550

PEDFQ5 KANEKO 5

PEDFAJ47492 KANEKO J47492

PEDFAJ1555 ITOHIRASHIGE J1555

IMJFAJ2703 ITOMORITAKA J2703 HONGEN (IMP JAP)

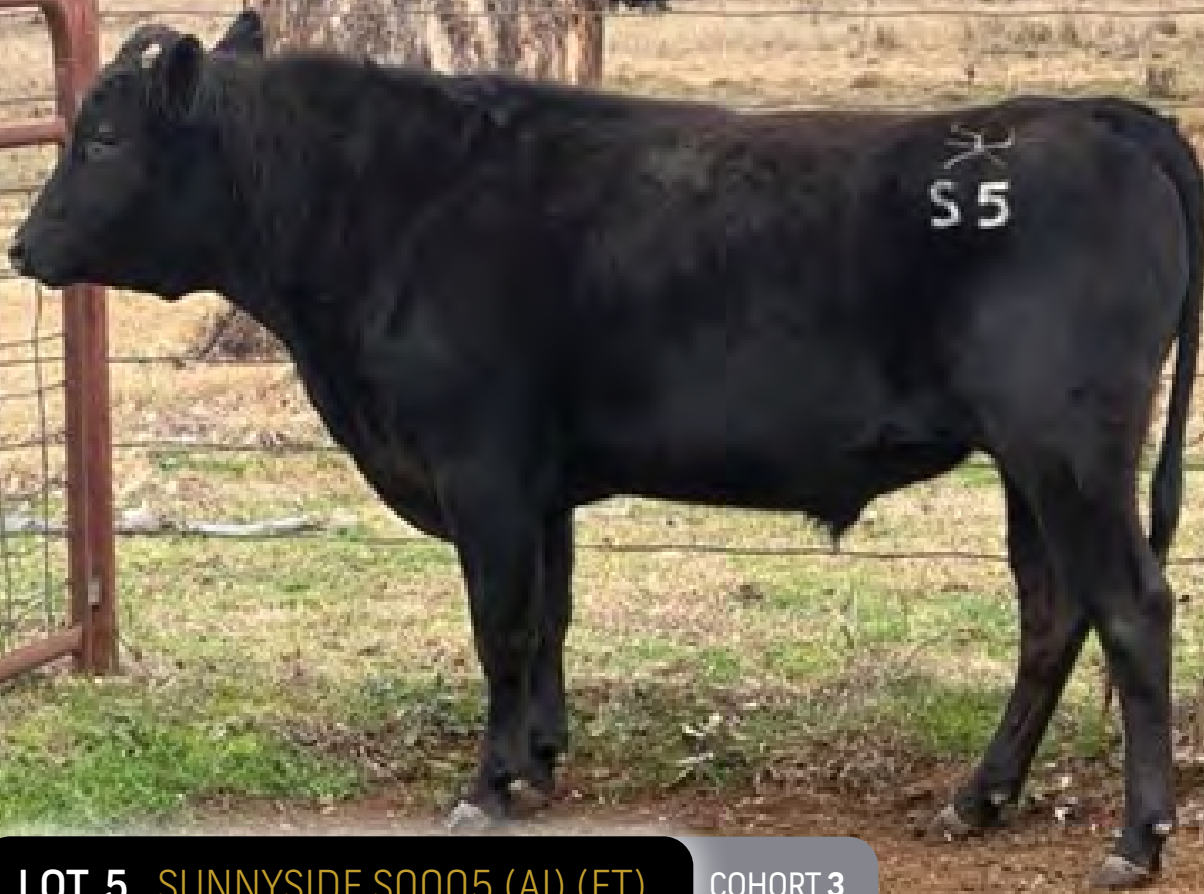
PEDFAJ565554 DAI 6 OEFUJII J565554 - KURO KOH

DAM TWFD0137 TRIG FARM WAGYU D0137

IMUFMTF150 KIKUTERUSHIGE (IMP USA)

LFDFZ0580 LONGFORD LFDB580

TMBFT0019 DENI 019A

**LOT 5 SUNNYSIDE S0005 (AI) (ET)****COHORT 3**

GL	BW	200	400	600	MCW	MILK	CWt	EMA	RUMP	RBV	MS	MF	WBI	SRI	FTI	F1I
-0.7	-0.4	7	16	28	12	2	30	10.3	-1.6	2.1	2.8	0.36	257	264	249	233
65%	70%	73%	71%	68%	59%	57%	65%	61%	62%	51%	62%	54%	WAGYU GROUP BREEDPLAN JUNE 2023 RUN 2			

REGO NO. PSKFS0005
DOB 16/3/2021
COLOUR BLACK

SIRE OWNER RN KRAUSE & CO
GRADE FULLBLOOD
BLOOD 100%

GENETIC CONDITIONS **B3F, CHSF, CL16FU, F11F, IARSF**
EXPORT STATUS Australia Only
STORAGE LOCATION BEEF BREEDING SERVICES - WACOL
(current)

SIRE OWNER COMMENTS

100 straws available

A son of Arubial Bond 007 this sire is loaded with carcass potential, with EMA in the top 1 percentile, MS in the top 5 percentile and above average carcass weight. Though still providing average growth and above average milk. The dam PSKFP0369 is sired by Y408, a well proven carcass sire. The grand dam has provided our herd with progeny that have great growth, fertility and carcass results with her last carcass progeny scoring MS 9 and 400+kg carcass. PSKFS0005 is free of all known genetic disorders.

As far as carcass sire goes, he has all the makings of an animal who will perform.

IMUFQTF148 ITOSHIGENAMI (IMP USA)

ADBFA0139 MAYURA ITOSHIGENAMI JNR

ADBFX0001 MAYURA DAI NI KINNTOU 1

SIRE MYMFQ007 ARUBIAL BOND Q007

ADBFA0139 MAYURA ITOSHIGENAMI JNR

PMGFLO0021 PEPPERMILL GROVE L0021

PMGFG0037 PEPPERMILL GROVE G037

IMJFAJ2810 KITATERUYASUDOJI J2810 HONGEN (IMP JAP)

BDWFY0408 MACQUARIE WAGYU Y408

TWAFU0561 TWA F U561

DAM PSKFP0369 SUNNYSIDE P0369

CCCFZ0116 BALD RIDGE TERUTANI 40/1 Z116

PSKFF0017 SUNNYSIDE F F017

PSKFD0033 SUNNYSIDE F D33



LOT 6 STARTZ HODAN RH07 (ET) **COHORT 3**



GL	BW	200	400	600	MCW	MILK	CWt	EMA	RUMP	RBV	MS	MF	WBI	SRI	FTI	FII
2	-1.7	-5	-7	-8	-19	-5	-16	6	1.5	0.3	1.2	0.06	107	134	119	126
58%	67%	69%	67%	65%	56%	57%	64%	60%	58%	47%	58%	54%	WAGYU GROUP BREEDPLAN JUNE 2023 RUN 2			

REGO NO. STZFR0007
 DOB 18/8/2020
 COLOUR BLACK

SIRE OWNER STARTZ CATTLE CO
 GRADE FULLBLOOD
 BLOOD 100%

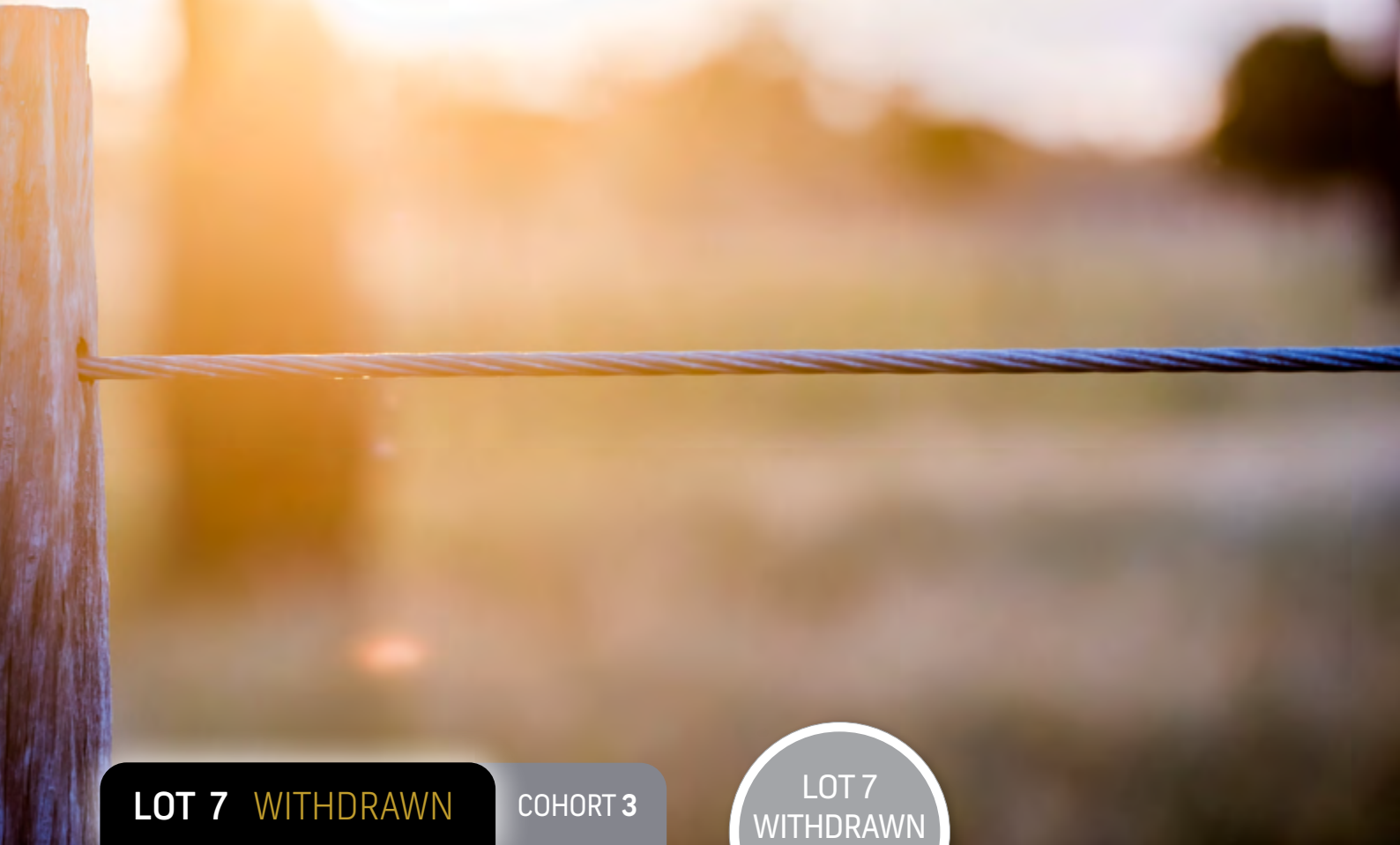
GENETIC CONDITIONS **B3F, CHSF, CL16F, F11F, IARSF**
 EXPORT STATUS Australia & USA
 STORAGE LOCATION Brushy Creek - Texas, USA (scheduled departure to Rocky Repro - 10 Aug).

SIRE OWNER COMMENTS

100 straws available

Hodan RH07 is a sire with a beautiful blend of Yasumi doi, Yasufuku and Shigeshigenami bloodlines with a bit of growth in the background from Dai 7 Itosakura and his son Itohana. Hodan RH07's sire, Kousyun is a direct son of Yasufuku J930 combined with Shigeshigenami son, Okushige. Kousyun's semen has limited availability in Australia. Hodan RH07 is free of all genetic defects. Hodan RH07's full sibling was recently harvested yielding a score of AUS MIJ DMS 11.5. His progeny's average birth weight were 0.9 kg heavier when compared to progeny from 4 other bulls within the two contemporary groups. Weaning weights resulted in his progeny outperforming other sires by an average of 7.7kg. Hodan RH07 provides an outstanding pedigree that is sure to complement a wide assortment of breeding philosophies from line breeding to outcrossing big growth and frame cows. Hodan RH07 has the blood that won't disappoint.

- PEDFAJ472 YASUTANI DOI J472
- PEDFAJ930 YASUFUKU J930
- PEDFM004 CHIZURU 85545
- SIRE PEDFB19540 YH11Z KOUSYUN**
- PEDFA1803 OKUSHIGE J1803
- PEDFS9 OKUITO 9
- PEDFM6 ITOSACHIMI 6
- PEDFA10632 SHIGESHIGENAMI J10632
- IMUFQTF148 ITOSHIGENAMI (IMP USA)
- PEDFA661 FUKUYUKI
- DAM 748FF36W SHARON FB13116**
- WKSFM0164 WORLD K'S MICHIFUKU
- USAFT0003 OTANASHII (FB4458)
- PEDFP05D FUJIKO FB1984



LOT 7 WITHDRAWN

COHORT 3

LOT 7 WITHDRAWN FROM SALE



GL	BW	200	400	600	MCW	MILK	CV	BY	MS	MF	WBI	SRI	FTI	FII

WAGYU GROUP BREEDPLAN
JUNE 2023 RUN 2

REGO NO. LOT WITHDRAWN
DOB
COLOUR

SIRE OWNER
GRADE
BLOOD

GENETIC CONDITIONS
EXPORT STATUS
STORAGE LOCATION
(current)



LOT 8 WSI CELSIOR (ET) COHORT 3



GL	BW	200	400	600	MCW	MILK	CWt	EMA	RUMP	RBV	MS	MF	WBI	SRI	FTI	F1I
0	0.2	11	17	16	27	-5	22	4.3	0.5	0.2	2	0.34	229	249	206	200
60%	66%	68%	65%	64%	55%	55%	62%	58%	58%	45%	59%	51%	WAGYU GROUP BREEDPLAN JUNE 2023 RUN 2			

REGO NO. WSIFS513
DOB 26/2/2021
COLOUR BLACK

SIRE OWNER REBEL WAGYU
GRADE FULLBLOOD
BLOOD 100%

GENETIC CONDITIONS B3FU, CHSFU, CL16FU, F11FU, IARSFU
EXPORT STATUS Australia & USA
STORAGE LOCATION Brushy Creek - Texas, USA (scheduled departure to Rocky Repro - 10 Aug).

SIRE OWNER COMMENTS

100 straws available

A female sold for \$400,000 in the 2022 Australian Elite Sale? You may be wondering what this has to do with this Celsior. Well, that \$400,000 female shares similar lineage with as Celsior; they both are a result of Macquarie Y408. This brings Kitateruyasudo to both pedigrees and the famed TWA U561 maternal line. It doesn't stop there, the direct dam is a Mayura donor and this also makes Celsior the maternal brother to Mayura Precision - a hot young AI sire.

With this comes her direct sire, Shigeshigetani. Add a dose of Itoshigenami - breed superstar - to the sire of Celsior and we have your next go to fullblood sire who sits in the top 10% for SRI, FTI and F1I.

- SMOFC0158 SUMO CATTLE CO ITOSHIGENAMI C0158
- CCOFG0113 COATES ITOSHIGENAMI G113
- CCOFC0446 COATES TANI C446
- SIRE BDWFN0100 MACQUARIE WAGYU N0100**
- BDWFY0408 MACQUARIE WAGYU Y408
- BDWFD1995 MACQUARIE WAGYU F D1995
- BDWFX0287 MACQUARIE WAGYU F X287
- WKSFM0139 WORLD K'S HARUKI 2 (FB1614)
- WKSFP1593 WORLD K'S SHIGESHIGETANI 1593
- WKSFL0976 WORLD K'S SUZUTANI (FB1617)
- DAM ADBFLO032 MAYURA L0032**
- WKSFM0164 WORLD K'S MICHIFUKU
- WGWF8225 WAGYU GENETICS CHIYOTAKE D8225
- KTOFW2239 KINTO F W2239

**LOT 9 YALANDRA R16 (AI) (ET)****COHORT 3**

GL	BW	200	400	600	MCW	MILK	CWt	EMA	RUMP	RBV	MS	MF	WBI	SRI	FTI	F1I
2.7	3.2	13	27	37	36	-2	33	3.7	2.6	-0.5	2.2	0.28	252	259	227	207
67%	71%	73%	70%	68%	60%	59%	65%	59%	60%	48%	60%	54%	WAGYU GROUP BREEDPLAN JUNE 2023 RUN 2			

REGO NO. YALFR16
DOB 24/10/2020
COLOUR BLACK

SIRE OWNER YALANDRA PASTORAL CO
GRADE FULLBLOOD
BLOOD 100%

GENETIC CONDITIONS **B3F, CHSF, CL16F, F11F, IARSF**
EXPORT STATUS Australia Only
STORAGE LOCATION BEEF BREEDING SERVICES - WACOL
(current)

SIRE OWNER COMMENTS

100 straws available

Yalandra R16 is a well balanced bull in both his EBV's and phenotypically. He is top 5% in three indexes and boasts excellent percentages in MS, EMA, carcase and growth traits.

Sired by Tyddewi N4431 and out of Yalandra C0121 he has the best of Itoshigenami, Westholme genetics and World K's Michifuku. Yalandra R16 is an excellent option for any breeding operation.

| IMUFQTF148 ITOSHIGENAMI (IMP USA)

ADBFA0139 MAYURA ITOSHIGENAMI JNR

| ADBFX0001 MAYURA DAI NI KINNTOU 1

SIRE DSWFN4431 TYDDEWI N4431

| AACFD0965 WESTHOLME D0965

AACFJ0147 WESTHOLME J0147

| WESFX0165 WESTHOLME UTSUNA

| PEDFA10632 SHIGESHIGENAMI J10632

IMUFQTF148 ITOSHIGENAMI (IMP USA)

| PEDFA661 FUKUYUKI

DAM YALFC0121 YALANDRA C0121

| WKSFM0164 WORLD K'S MICHIFUKU

DONFX0186 MCKENZIE 186

| ADBFV0037 MAYURA ITOCHIYOFUJI 7/2

**LOT 10 MACQUARIE WAGYU M0554 (AI) (ET)**

COHORT 2



GL	BW	200	400	600	MCW	MILK	CWt	EMA	RUMP	RBV	MS	MF	WBI	SRI	FTI	F1I
-0.3	-0.6	-1	-3	-7	5	-3	-8	4.9	-6.1	1.5	3	0.44	189	215	187	193
83%	78%	86%	86%	83%	73%	69%	82%	77%	76%	68%	81%	71%	WAGYU GROUP BREEDPLAN JUNE 2023 RUN 2			

REGO NO. BDWFM0554
DOB 5/11/2016
COLOUR BLACK

SIRE OWNER MACQUARIE WAGYU
GRADE FULLBLOOD
BLOOD 100%

GENETIC CONDITIONS B3F, CHSF, CL16F, F11F, IARS99%
EXPORT STATUS Australia Only
STORAGE LOCATION BEEF BREEDING SERVICES - WACOL
(current)

SIRE OWNER COMMENTS

40 straws available

Macquarie Wagyu M0554 was bred specifically because of the outstanding performance data we have seen from this joining. He has produced 16 carcasses averaging 401kg and an average of 9.6 MS.

His sisters have produced 16 carcasses between them averaging 432kg and MS of 8.8. His brothers have produced 99 carcasses averaging 400kg and an average 8.4 MS.

This bull will breed you high marbling, low birth weight animals with BREEDPLAN EBVs to back it up. Straws are for domestic use only.

PEDFAJ10787 KIKUTERU DOI J10787

PEDFAJ1742 TERUNAGADOI 1742

PEDFAJ240580 TERUNAH0 J240580

SIRE IMJFAJ2810 KITATERUYASUDOI J2810 HONGEN (IMP JAP)

PEDFAJ472 YASUTANI DOI J472

PEDFAJ601124 YOSHIMI 3 601124

PEDFAJ206526 YOSHIMI J206526 - KURO IKU

PEDFA10632 SHIGESHIGENAMI J10632

IMUFQTF148 ITOSHIGENAMI (IMP USA)

PEDFA661 FUKUYUKI

DAM BDWFWO170 MACQUARIE WAGYU FW170

WKSFM0139 WORLD K'S HARUKI 2 (FB1614)

SUMFT0802 SUMO RUKI T802

IMUFR3243 TF AIZAKURA 26/2 (IMP USA)

**LOT 11 MACQUARIE WAGYU P0006 (ET)**

COHORT 2



GL	BW	200	400	600	MCW	MILK	CWt	EMA	RUMP	RBY	MS	MF	WBI	SRI	FTI	F1I
-2.3	1.9	22	37	48	34	-1	30	1.9	-6.3	2.2	1.3	0.13	218	198	166	136
76%	83%	83%	79%	78%	69%	67%	76%	72%	72%	63%	75%	65%	WAGYU GROUP BREEDPLAN JUNE 2023 RUN 2			

REGO NO. BDWFP0006
DOB 4/3/2018
COLOUR BLACK

SIRE OWNER MACQUARIE WAGYU
GRADE FULLBLOOD
BLOOD 100%

GENETIC CONDITIONS **B3F, CHSF, CL16F, F11F, IARSF**
EXPORT STATUS Australia Only
STORAGE LOCATION BEEF BREEDING SERVICES - WACOL
(current)

SIRE OWNER COMMENTS

40 straws available

Macquarie Wagyu P0006 is a large framed bull (weighing 980 kg) with excellent proven data on both sides of his pedigree. His sire Macquarie Wagyu BDWFO408 is renowned as a carcass bull who also breeds both excellent sires and breeding females.

His dam BDWFZ0561 is a large framed TF151/ Hirashigetayasu cow who averages 496kg HCWT and MS average of 7.6 from 15 carcasses produced. She is used as a donor in our herd and her progeny are breeding on and producing excellent carcasses.

Breed with confidence from this up and coming recessive free sire. Straws are for domestic use only.

PEDFAJ1742 TERUNAGADOI 1742

IMJFAJ2810 KITATERUYASUDOI J2810 HONGEN (IMP JAP)

PEDFAJ601124 YOSHIMI 3 601124

SIRE BDWFO408 MACQUARIE WAGYU Y408

IMUFQ2599 TF YUKIHARUNAMI 4 (IMP USA)

TWAFU0561 TWA F U561

TWAFS0212 TWA DAIRISEKI (IMP USA)

PEDFAJ1081 ITOKITATSURU J1081

IMUFLTF151 ITOZURUDOI TF151 (IMP USA)

PEDFAJ433313 YASUHIME J433313

DAM BDWFZ0561 MACQUARIE WAGYU F Z561

IMJFAJ2351 HIRASHIGETAYASU J2351 HONGEN (IMP JAP)

BDWFX0297 MACQUARIE WAGYU F X297

SUMFU2027 SUMO RUKI U2027

**LOT 12 LENDARLOU HLKFS009 (AI) (ET)****COHORT 2**

GL	BW	200	400	600	MCW	MILK	CWt	EMA	RUMP	RBV	MS	MF	WBI	SRI	FTI	F1I
-1.1	1.1	16	25	39	30	2	43	5.8	-1	1.6	1.6	0.28	225	216	189	166
66%	70%	72%	70%	68%	59%	57%	65%	62%	63%	52%	62%	55%	WAGYU GROUP BREEDPLAN JUNE 2023 RUN 2			

REGO NO. HLKFS009
DOB 29/1/2021
COLOUR BLACK

SIRE OWNER LEONARD & DARREN HENSHELL
GRADE FULLBLOOD
BLOOD 100%

GENETIC CONDITIONS **B3F, CHSF, CL16F, F11F, IARSF**
EXPORT STATUS Australia Only
STORAGE LOCATION BEEF BREEDING SERVICES - WACOL
(current)

SIRE OWNER COMMENTS

40 straws available

Lendarlou HLKFS009 is a very high growth bull with good length. He has been 60kgs heavier than all our bulls in the same contemporary group the whole way along. His dam is a very big TF151 cow.

Totally free of genetic conditions and would make great females with above average marbling.

| IMUFQTF148 ITOSHIGENAMI (IMP USA)

ADBFA0139 MAYURA ITOSHIGENAMI JNR

| ADBFX0001 MAYURA DAI NI KINNTOU 1

SIRE MYMFQ007 ARUBIAL BOND Q007

| ADBFA0139 MAYURA ITOSHIGENAMI JNR

PMGFLO0021 PEPPERMILL GROVE L0021

| PMGFG0037 PEPPERMILL GROVE G037

| PEDFAJ1081 ITOKITATSURU J1081

IMUFLTF151 ITOZURUDOI TF151 (IMP USA)

| PEDFAJ433313 YASUHIME J433313

DAM HLKFN018 LENDARLOU ITOZURIOMICHI

| IMUFR3258 TF TERUTANI 40/1 (IMP USA)

YY1FX0032 BANDON SUPER SUKU FORTIWUN

| SUMFU2122 SUMO FUKU U2122



LOT 13 LMR YUKI 9273G (ET)

COHORT 2



GL	BW	200	400	600	MCW	MILK	CWt	EMA	RUMP	RBY	MS	MF	WBI	SRI	FTI	F1I
-0.9	-0.5	-1	-2	-1	-5	-3	11	4	0.1	-0.7	2.7	0.38	167	203	209	215
68%	71%	72%	70%	69%	63%	64%	69%	67%	63%	58%	64%	63%	WAGYU GROUP BREEDPLAN JUNE 2023 RUN 2			

REGO NO. LMRFQ9273
DOB 15/4/2019
COLOUR BLACK

SIRE OWNER LONE MOUNTAIN CATTLE CO
GRADE FULLBLOOD
BLOOD 100%

GENETIC CONDITIONS B3F, CHSF, CL16FU, F11F, IARSF
EXPORT STATUS Australia & USA
STORAGE LOCATION BEEF BREEDING SERVICES - WACOL
(current)

SIRE OWNER COMMENTS

40 straws available

LMR Yuki 9273G, sired by Kitaguni Jr out of a dam sired by Itoshigenami TF148, ranks in the top 5% of all Wagyu bulls outside of Japan for MS. WKS Kitaguni Jr, was the #1 dam sire in the most recent LMR sire performance study for IMF (84 carcasses = average 34.81% IMF). Kitaguni Jr shows decent numbers as a sire, averaging 34.28% IMF on 121 LMR imaged carcasses. In BREEDPLAN, Kitaguni Jr is one of the leading sires for MS and is a trait leader and top 1% for the BW EBV. Itoshigenami TF148 is the sire of Mayura Itoshigenami Jnr 0139, the so-called "The King of Australian Wagyu Sires" and grandsire of Mayura L0010. TF148 is a trait leader and within the top 5% for the BW and is a trait leader and ranks in the top 5% for MS. 9273G's dam, LMR MS Itoshigenami 9320W, is LMR's most valuable donor, having produced 27 calves, including a Yasufuku cow that graded 36% IMF; 2 Kitaguni steers that graded 43% and 36% IMF; a 38% Haruki steer; and 3 434B steers that graded 40%, 38% and 37% IMF. 9320W's dam, LMR MS Sanjirou 4P 714T, produced a 40% IMF Kitaguni steer before she was sold, and 2 of our most valuable donors (still active) in addition to 9320W.

PEDFAJ65 DAI 7 ITOZAKURA J65

PEDFAJ1530 KITAGUNI 7-8 J1530

PEDFAJ81009 KITAGUNI 7 J81009

SIRE WKSFP0001 WORLD K'S KITAGUNI JR

PEDFAJ2132 YUKIFUKU J2132

WKSFM2893 WORLD K'S NAKAYUKI J13943

PEDFANAKHANA3 NAKHANA 3 J1792470

PEDFA10632 SHIGESHIGENAMI J10632

IMUFQTF148 ITOSHIGENAMI (IMP USA)

PEDFA661 FUKUYUKI

DAM LMRFE9320W LMR MS ITOSHIGENAMI 9320W

IMUFY5663 BAR R SANJIRO 4P (IMP USA)

LMRFC714T LMR MS SANJIRO 4P 714T

USAFB4229 BAR R MISS 24H


LOT 14 LMR SHOGUN 0397H (ET)
COHORT 2


GL	BW	200	400	600	MCW	MILK	CWt	EMA	RUMP	RBV	MS	MF	WBI	SRI	FTI	FII
3	-2.6	-11	-19	-29	-24	-4	-9	7	1.1	-0.3	2.8	0.40	128	180	193	215
66%	71%	72%	70%	70%	65%	65%	70%	68%	66%	60%	67%	65%	WAGYU GROUP BREEDPLAN JUNE 2023 RUN 2			

REGO NO. LMRFR0397
DOB 23/4/2020
COLOUR BLACK

SIRE OWNER LONE MOUNTAIN CATTLE CO
GRADE FULLBLOOD
BLOOD 100%

GENETIC CONDITIONS B3F, CHSF, CL165%, F11F, IARSFU
EXPORT STATUS Australia & USA
STORAGE LOCATION BEEF BREEDING SERVICES - WACOL
(current)

SIRE OWNER COMMENTS

40 straws available

LMR Itoshigenami 0397H, sired by Itoshigenami TF148 out of a dam sired by Kitaguni Jr, ranks in the top 5% of all Wagyu bulls outside of Japan for MS and BW. TF148 sired Mayura Itoshigenami Jnr 0139, the so-called "The king of Australian Wagyu sires" and grandsire of Mayura L0010. TF148 is a trait leader and top 5% for BW ranking in the top 5% for MS. WKS Kitaguni Jr, was the #1 dam sire in the most recent LMR sire performance study for IMF (84 carcasses = average 34.81% IMF). Kitaguni Jr shows good numbers as a sire, averaging 34.28% IMF on 121 LMR imaged carcasses. In BREEDPLAN, Kitaguni Jr is one of the leading sires for MS and within the top 1% for BW. 0397H's dam, LMR MS Kitaguni 8168U, is one of LMR's best donor cows producing 54 calves, including 5 Itoshigenami TF148 steers that graded 45%, 43%, 42%, 41%, and 39% IMF and 2 herd sires. She has also produced 315 viable embryos in 40 flushes (average = 7.88 viable embryos per flush). 8168U is a full sibling to LMR Kitaguni 1441Y. 8168U's dam, BR MS Yasufuku 0645, produced 22 calves, including a steer by Kitaguni Jr that graded 50% IMF - and 2 donor cows and 2 herd sires.

PEDFAJ6109 SHIGEKANENAMI J6109

PEDFA10632 SHIGESHIGENAMI J10632

PEDFAJ774695 SHIGEMITSU J774695 (FB4751)

SIRE IMUFQTF148 ITOSHIGENAMI (IMP USA)

PEDFAJ10756 FUKUMASA J10756

PEDFA661 FUKUYUKI

PEDFAJ456691 YUKIZAKURA J456691

PEDFAJ1530 KITAGUNI 7-8 J1530

WKSFP0001 WORLD K'S KITAGUNI JR

WKSFM2893 WORLD K'S NAKAYUKI J13943

DAM LMRFD8168U LMR MS KITAGUNI 8168U

WKSFS0100 WORLD K'S YASUFUKU JR (FB5061)

USAFB5084 BR MS YASUFUKU 0645

PEDFT321 MISS BAR R 321H

**LOT 15 MOYHU SHIKIYASU 2 (AI) (ET)****COHORT 2**

GL	BW	200	400	600	MCW	MILK	CWt	EMA	RUMP	RBV	MS	MF	WBI	SRI	FTI	F1I
1.1	1.6	2	3	2	13	-6	-5	4.2	-5.2	1.4	1.6	0.26	125	134	103	100
67%	81%	75%	74%	74%	68%	65%	70%	66%	67%	58%	67%	62%	WAGYU GROUP BREEDPLAN JUNE 2023 RUN 2			

REGO NO. MOYFM0033
DOB 1/4/2016
COLOUR BLACK

SIRE OWNER WAGYU GENETICS VICTORIA PTY LTD
GRADE FULLBLOOD
BLOOD 100%

GENETIC CONDITIONS B3FU, CHSFU, CL16FU, F1199%, IARS99%
EXPORT STATUS Australia Only
STORAGE LOCATION BEEF BREEDING SERVICES - WACOL
(current)

SIRE OWNER COMMENTS

40 straws available

Moyhu Shikiyasu 2 is sired by TWAFR0007 Shikikan and produced from one of Moyhu Wagyu's best cows MOYFA0232. Shikiyasu 2 has produced 12 carcasses from two separate slaughter groups with marbling scores of nothing less than 9 and 9+. Shikiyasu 2 is a full brother of Shikiyasu (MOYFM0026) who has outstanding EBVs for MS, MF, EMA and MCW. We expect Shikiyasu 2 to exceed an EBV of +2.5 for marbling. Before going to collection Shikiyasu 2 weighed around 850kgs.

While not the heaviest of our bulls he makes up for this in his pedigree. Sired by Shikikan having Kitateruyasudoi and Michifuku on his dam's side who herself has produced 9+ carcasses giving him 80% Tajima blood. Shikiyasu 2 an ideal for Fullblood and Crossbred Wagyu breeders looking to lift marbling.

PEDFAJ1412 TAKAEI J1412

WKSFN2892 WORLD K'S TAKAZAKURA

PEDFASAKURA7 DAI 2 SAKURA 7 J1713278

SIRE TWAFR0007 TWA SHIKIKAN (IMP USA)

PEDFA211 TANISHIGE 1526 - KURO KOH

WKSFL0976 WORLD K'S SUZUTANI (FB1617)

PEDFASUZUNAMI SUZUNAMI 472255

PEDFAJ1742 TERUNAGADOI 1742

IMJFAJ2810 KITATERUYASUDOI J2810 HONGEN (IMP JAP)

PEDFAJ601124 YOSHIMI 3 601124

DAM MOYFA0232 MOYHU FA0232

WKSFM0164 WORLD K'S MICHIFUKU

MOYFW0039 MOYHU F W039

TWAFT0493 TWA 493

**LOT 16 OLIVE GROVE WAGYU R18 (ET)**

COHORT 2



GL	BW	200	400	600	MCW	MILK	CWt	EMA	RUMP	RBV	MS	MF	WBI	SRI	FTI	FII
-0.5	5.2	22	40	50	69	-6	51	2.9	-3.6	0.5	2.4	0.50	319	319	245	215
63%	69%	72%	69%	68%	60%	61%	66%	62%	63%	50%	63%	54%	WAGYU GROUP BREEDPLAN JUNE 2023 RUN 2			

REGO NO. OGWFR18
DOB 30/1/2020
COLOUR BLACK

SIRE OWNER AOA QLD PTY LTD
GRADE FULLBLOOD
BLOOD 100%

GENETIC CONDITIONS **B3F, CHSF, CL16F, F11F, IARSF**
EXPORT STATUS Australia, USA & Canada
STORAGE LOCATION BEEF BREEDING SERVICES - WACOL
(current)

SIRE OWNER COMMENTS

40 straws available

R18 is OGW's highest ranked bull for the 2020 breeding year, with a current SRI of +\$319. His sire SMOFLO0195 has an SRI +\$329. Combine this with R18's dam, SMOFLO0062, who is by SMOFF0154 and out of a dam by Shikikan on the top side and a TF151 daughter on the bottom side, you have a bull well and truly bred to produce the best. R18 is ranked in the top 1% for WBI and SRI and is free of all genetic disorders.

WKSFM0164 WORLD K'S MICHIFUKU
SMOFF0154 SUMO CATTLE CO MICHIFUKU F154
SMOFC0016 SUMO CATTLE CO TANI C016
SIRE SMOFLO0195 SUMO CATTLE CO MICHIFUKU L195
SUMFX0081 SUMO ITOSHIGENAMI X0081
CCOFD0270 COATES NAMI D270
SUMFW1531 SUMO RUNO W1531
WKSFM0164 WORLD K'S MICHIFUKU
SMOFF0154 SUMO CATTLE CO MICHIFUKU F154
SMOFC0016 SUMO CATTLE CO TANI C016
DAM SMOFLO0062 SUMO CATTLE CO FUKU L62
TWAFFR0007 TWA SHIKIKAN (IMP USA)
SMOFD0205 SUMO CATTLE CO KAN D205
SUMFW0960 SUMO DOI W0960

**LOT 17 Q WAGYU FUJI (ET)**

COHORT 2



GL	BW	200	400	600	MCW	MILK	CWt	EMA	RUMP	RBV	MS	MF	WBI	SRI	FTI	F1I
1.6	-0.3	2	7	7	13	-6	9	0.7	-1.2	-0.1	1.8	0.38	154	172	141	139
62%	70%	70%	68%	67%	59%	59%	65%	60%	60%	48%	62%	55%	WAGYU GROUP BREEDPLAN JUNE 2023 RUN 2			

REGO NO. QLDFR0001
DOB 21/9/2020
COLOUR BLACK

SIRE OWNER QUEENSLAND WAGYU
GRADE FULLBLOOD
BLOOD 100%

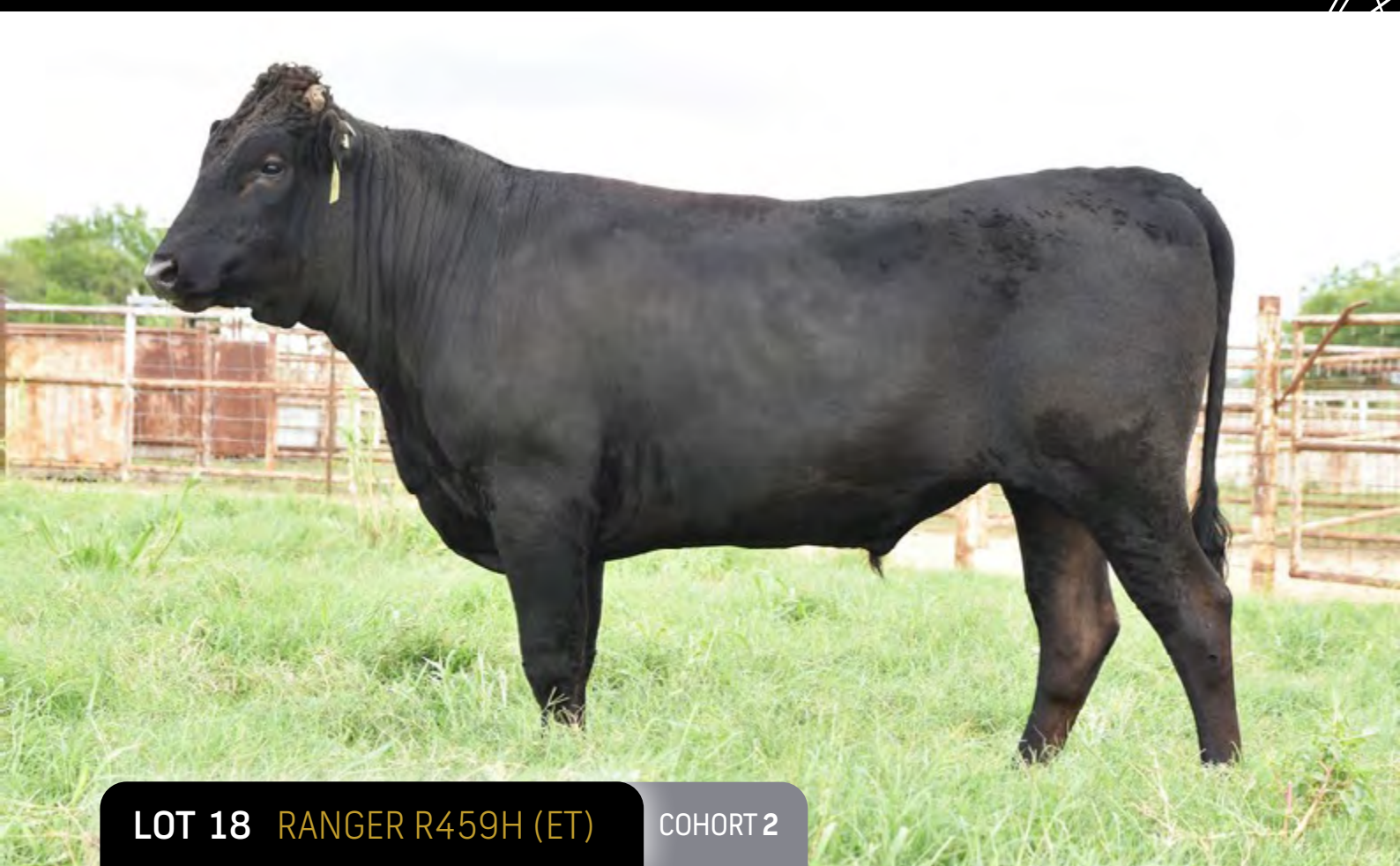
GENETIC CONDITIONS **B3F, CHSF, CL16F, F11F, IARSF**
EXPORT STATUS Australia Only
STORAGE LOCATION BEEF BREEDING SERVICES - WACOL
(current)

SIRE OWNER COMMENTS

40 straws available

If ever there was a potential marbling bull that also brought the best of female lines together, this is the bull. Fuji R1 is sired by Sumo L153, an elite son of Sumo Michifuku F154, that beyond his very impressive sire stack, also features a double dose of the super star producing Shimane matriarch Hikohime 3/2. Itoshigefuji TF148 sired R1's dam out of the prolific, and highly desirable, Kanadagene daughter, Benlee Aizakura X158. Benlee Aizakura features in the bloodline of several prominent modern bulls, including Mayura L10. The Suzutani line needs no introduction with sons like Shigeshigetani, Sanjirou and Kanadagene. The Aizakura line traces back to Aino 6 that produced the great Fujiyoshi-line maternal bull, Itohana 2. The EBVs project that high and fine marbling should be expected in Fuji R1's progeny. Carcase weight and maternal characteristics are expected to be supported by the contributions of Terutani 40/1. From experience, genomic EBVs appears to suggest that DNA from Tajima lines exert more marbling influence over Shimane lines, without diminishing the growth and milk traits of the latter, so that progeny ultimately ends up balanced with both good marbling and a reasonable carcase weight.

WKSFM0164 WORLD K'S MICHIFUKU
SMOFF0154 SUMO CATTLE CO MICHIFUKU F154
SMOFC0016 SUMO CATTLE CO TANI C016
SIRE SMOFL00153 SUMO CATTLE CO MICHIFUKU L153
SUMFX0081 SUMO ITOSHIGENAMI X0081
SMOFE0071 SUMO CATTLE CO NAMI E071
CCOFA0089 COATES NAMI A089
PEDFA10632 SHIGESHIGENAMI J10632
IMUFQTF148 ITOSHIGENAMI (IMP USA)
PEDFA661 FUKUYUKI
DAM LINF08424 LINDAN F08424
WKSFPC100 WORLD K'S KANADAGENE 100
BENFX0158 BENLEE AIZAKURA X158
SUMFT0908 SUMO RUKI T908

**LOT 18 RANGER R459H (ET)****COHORT 2**

GL	BW	200	400	600	MCW	MILK	CWt	EMA	RUMP	RBV	MS	MF	WBI	SRI	FTI	FII
0.3	0.6	11	24	34	31	5	45	8.3	-0.1	1.6	2.2	0.36	240	233	227	207
65%	71%	71%	69%	68%	60%	59%	67%	63%	60%	51%	61%	57%	WAGYU GROUP BREEDPLAN JUNE 2023 RUN 2			

REGO NO. RGRFR459H
DOB 9/4/2020
COLOUR BLACK

SIRE OWNER BRENNER CATTLE COMPANY
GRADE FULLBLOOD
BLOOD 100%

GENETIC CONDITIONS **B3F, CHSC, CL16FU, F11F, IARSF**
EXPORT STATUS Australia & USA
STORAGE LOCATION BEEF BREEDING SERVICES - WACOL
(current)

SIRE OWNER COMMENTS

20 straws available

A son of Mayura L10 and the highly respected LMR MS Itomoritaka 1439Y donor cow, Ranger R459H is also a full brother of the \$150,000 and \$120,000 bulls sold in 2022.

According to Brushy Creek Custom Sire's, his semen quality is well above average with 35-40% average post thaw motility (industry average = 25%) and 18-20M live motile cells per straw (industry average 10-12M).

With this semen you can expect above average conception rates from this bull.

IMUFQTF148 ITOSHIGENAMI (IMP USA)

ADBFA0139 MAYURA ITOSHIGENAMI JNR

ADBFX0001 MAYURA DAI NI KINNTOU 1

SIRE ADBFLO010 MAYURA LO010

ADBZF0025 MAYURA ZULU

ADBFH0159 MAYURA H0159

WGWFD8371 WAGYU GENETICS AIZAKURA D8371

PEDFAJ1555 ITOHIRASHIGE J1555

IMJFAJ2703 ITOMORITAKA J2703 HONGEN (IMP JAP)

PEDFAJ565554 DAI 6 OEFUJII J565554 - KURO KOH

DAM LMRFG1439Y LMR MS ITOMORITAKA 1439Y

IMUFQTF148 ITOSHIGENAMI (IMP USA)

LMRFD8107U LMR MS ITOSHIGENAMI 8107U

USAFB4473 BR MS MICHIFUKU T4E 8605



image currently
unavailable

LOT 19 COOCHIN MICHIFUKU 86

COHORT 2



GL	BW	200	400	600	MCW	MILK	CWt	EMA	RUMP	RBV	MS	MF	WBI	SRI	FTI	F1I
0.5	4.4	29	39	48	60	-6	41	-1	-1.6	-0.4	2.1	0.43	286	284	221	195
87%	76%	88%	79%	77%	64%	61%	69%	59%	60%	47%	61%	52%	WAGYU GROUP BREEDPLAN JUNE 2023 RUN 2			

REGO NO. SRQFP086
DOB 20/8/2018
COLOUR BLACK

SIRE OWNER TRENTBRIDGE WAGYU STUD
GRADE FULLBLOOD
BLOOD 100%

GENETIC CONDITIONS B3FU, CHSFU, CL16FU, F11FU, IARSC
EXPORT STATUS Australia Only
STORAGE LOCATION BEEF BREEDING SERVICES - WACOL
(current)

SIRE OWNER COMMENTS

40 straws available

Cochin Michifuku 086 was purchased in 2019 from Cochin Wagyu to provide diversity to the Trent Bridge Wagyu program. Since then, P86 has been used heavily each year in the stud.

He provides a superb balance of elite MS and very strong growth traits. His female progeny have grown out very nicely and have already entered the stud program.

WKSFM0164 WORLD K'S MICHIFUKU

SMOFF0154 SUMO CATTLE CO MICHIFUKU F154

SMOFC0016 SUMO CATTLE CO TANI C016

SIRE SMOFLO0195 SUMO CATTLE CO MICHIFUKU L195

SUMFX0081 SUMO ITOSHIGENAMI X0081

CCOFD0270 COATES NAMI D270

SUMFW1531 SUMO RUNO W1531

IMJFAJ2351 HIRASHIGETAYASU J2351 HONGEN (IMP JAP)

SMOFE0148 SUMO CATTLE CO HIRASHIGETAYASU E148

SUMFW1433 SUMO NAMI W1433

DAM MCKFLO1283 CODENWARRA HIRASHIGETAYASU L1283

SUMFV2313 SUMO TERUTANI V2313

MCKFA0161 CODENWARRA F A0161

MCKFW0037 CODENWARRA F W0037

**LOT 20 STARTZ TORUKU**

COHORT 2



GL	BW	200	400	600	MCW	MILK	CWt	EMA	RUMP	RBV	MS	MF	WBI	SRI	FTI	FII
0.1	1	11	20	24	35	-2	24	1.6	-2.7	1.1	1.3	0.21	182	179	136	121
56%	65%	67%	64%	63%	54%	54%	60%	56%	57%	43%	57%	49%	WAGYU GROUP BREEDPLAN JUNE 2023 RUN 2			

REGO NO. STZFR0011
DOB 23/8/2020
COLOUR BLACK

SIRE OWNER STARTZ CATTLE CO
GRADE FULLBLOOD
BLOOD 100%

GENETIC CONDITIONS B3FU, CHSFU, CL16FU, F1113%, IARS38%
EXPORT STATUS Australia & USA
STORAGE LOCATION BEEF BREEDING SERVICES - WACOL
(current)

SIRE OWNER COMMENTS

40 straws available

Startz Toruku is an across the board well balanced bull whose pedigree is full of the power house foundation animals in the breed. All topped off with possibly one of the Wagyu industry's best kept secrets. Ekichi who is a direct son of J930. Our focus when breeding this pedigree was to keep Yasumi Doi and Shigekananami blood constant throughout the pedigree for high quality marbling, fineness and REA while utilizing Dia 7 and Monjiro genetics in the background for positive growth and frame characteristics without sacrificing carcass quality. Our objective was connectivity throughout the pedigree to enhance the strengths of these great foundation pedigrees. Toruku has a beautiful phenotype, correct in his stance and covers his tracks. His top is level, and he is deep in the flank. We are extremely excited about this bull and his potential to the breed.

PEDFAJ930 YASUFUKU J930

PEDFU999 WKS EIKICHI (FB20355)

WKSFS11074 WORLD K'S TAGUCHI 9

SIRE STZFP0008 STARTZ STZ EIKICHINAMI F008

IMUFQTF148 ITOSHIGENAMI (IMP USA)

WSIFD064U WSI RIKINAMI 2 (FB13796)

WSIFB12704 WSI RIKITERU 2

IMJFAJ2810 KITATERUYASUDOJ J2810 HONGEN (IMP JAP)

ECHFA3001 ECHIGO FARMS MAIFUKU

ECHFY3004 ECHIGO FARMS F Y3004

DAM STZFP0002 STARTZ MS MIAFUKU 151 ET (FB33097)

IMUFLTF151 ITOZURUDOJ TF151 (IMP USA)

?748UC26T TWW HIRATANACHI

PEDFB6338 TAKANASHI



LOT 21 SUNLAND YOI REI R35 (AI) (ET)

COHORT 2



GL	BW	200	400	600	MCW	MILK	CWt	EMA	RUMP	RBV	MS	MF	WBI	SRI	FTI	F1I
1.5	-4.3	-10	-20	-34	-41	1	-24	5.1	3.6	-1.1	2.2	0.35	84	136	167	194
65%	70%	71%	70%	69%	63%	64%	68%	65%	66%	57%	66%	62%	WAGYU GROUP BREEDPLAN JUNE 2023 RUN 2			

REGO NO. SUNFR0035
DOB 3/7/2020
COLOUR BLACK

SIRE OWNER SUNLAND CATTLE CO
GRADE FULLBLOOD
BLOOD 100%

GENETIC CONDITIONS B3F, CHSF, CL16F, F11F, IARST
EXPORT STATUS Australia Only
STORAGE LOCATION BEEF BREEDING SERVICES - WACOL
(current)

SIRE OWNER COMMENTS

40 straws available

SUNFR0035 is a genetic free son of Yasufuku Jr. His dam is by TF148 out of a Michifuku cow, his great grand dam came as an imported embryo from the USA. Of all the Yasufuku sons on the AWA website, he is rated equal 12th for MS, equal 2nd for MF with a big EMA.

He has a quiet temperament; he was always a meaty calf with a wide square back and top line. We intend to use him widely in our AI program this year at Sunland.

PEDFAJ472 YASUTANI DOI J472

PEDFAJ930 YASUFUKU J930

PEDFM004 CHIZURU 85545

SIRE WKSFS0100 WORLD K'S YASUFUKU JR (FB5061)

PEDFA201 MONJIRO J11550

PEDFQ5 KANEKO 5

PEDFAJ47492 KANEKO J47492

PEDFA10632 SHIGESHIGENAMI J10632

IMUFQTF148 ITOSHIGENAMI (IMP USA)

PEDFA661 FUKUYUKI

DAM SUNFN0959 SUNLAND SUNLANT ITOATO N959

WKSFM0164 WORLD K'S MICHIFUKU

EXLFD0053 EXCEL MICHI D0053

EXLFBV1108 EXCEL ASUKA (IMP USA)

**LOT 22 SYNERGY TF148 SUZUTANI 533G ET (ET)****COHORT 2**

GL	BW	200	400	600	MCW	MILK	CWt	EMA	RUMP	RBV	MS	MF	WBI	SRI	FTI	FII
-0.3	-1.1	3	5	-2	-5	-5	3	4.8	-0.3	0.5	1.6	0.31	172	199	161	165
66%	70%	72%	70%	69%	65%	65%	68%	65%	66%	58%	66%	63%	WAGYU GROUP BREEDPLAN JUNE 2023 RUN 2			

REGO NO. SYNFAQ533
DOB 9/10/2019
COLOUR BLACK

SIRE OWNER SYNERGY WAGYU
GRADE FULLBLOOD
BLOOD 100%

GENETIC CONDITIONS B3FU, CHSFU, CL16FU, F1150%, **IARSF**
EXPORT STATUS Australia, USA & Canada
STORAGE LOCATION BEEF BREEDING SERVICES - WACOL
(current)

SIRE OWNER COMMENTS

40 straws available

Synergy TF148 Suzutani 533G ET is an elite pedigreed son of Itoshigenami TF148 and from the Suzutani maternal line.

He boasts an incredible sire stack of TF148 x Michifuku x TF151 x Takazakura (Shikikan's full sister) x Suzutani!

PEDFAJ6109 SHIGEKANENAMI J6109

PEDFA10632 SHIGESHIGENAMI J10632

PEDFAJ774695 SHIGEMITSU J774695 (FB4751)

SIRE IMUFQTF148 ITOSHIGENAMI (IMP USA)

PEDFAJ10756 FUKUMASA J10756

PEDFA661 FUKUYUKI

PEDFAJ456691 YUKIZAKURA J456691

PEDFA201 MONJIRO J11550

WKSFM0164 WORLD K'S MICHIFUKU

PEDFA215 MICHIKO J655635

DAM SYNFM158 SYNERGY SYN MICH SUZI 158D

IMUFLTF151 ITOZURUDOI TF151 (IMP USA)

USAFB11844 STONYRUN ID 151 SUZITO 3

PEDFB6032 SUZUTAKA 2

**LOT 23 SYNERGY MICH SUZUTANI 87Q (AI)****COHORT 2**

GL	BW	200	400	600	MCW	MILK	CWt	EMA	RUMP	RBV	MS	MF	WBI	SRI	FTI	FII
0.7	-1.2	-2	4	-3	7	-7	-3	7.7	1.9	0.3	2	0.36	212	248	203	207
67%	70%	72%	70%	70%	65%	65%	68%	66%	67%	58%	66%	63%	WAGYU GROUP BREEDPLAN JUNE 2023 RUN 2			

REGO NO. SYNFQQ87
DOB 10/11/2019
COLOUR BLACK

SIRE OWNER SYNERGY WAGYU
GRADE FULLBLOOD
BLOOD 100%

GENETIC CONDITIONS B3FU, CHSFU, CL16FU, F11FU, IARSFU
EXPORT STATUS Australia, USA & Canada
STORAGE LOCATION BEEF BREEDING SERVICES - WACOL
(current)

SIRE OWNER COMMENTS

40 straws available

Synergy Mich Suzutani 87Q is a high marbling and carcass trait son of World K's Michifuku from the Suzutani maternal line. He is one of only a handful of Michifuku sons.

He has an impressive sire stack of Michifuku x TF148 x Shigesigetani x TF151 x Takazakura (Shikikan's full sister) x Suzutani.

PEDFAJ10328 YASUMIDOI J10328

PEDFA201 MONJIRO J11550

PEDFA203 HARUMI J1086409

SIRE WKSFM0164 WORLD K'S MICHIFUKU

PEDFA211 TANISHIGE 1526 - KURO KOH

PEDFA215 MICHIKO J655635

PEDFA216 MICHIFUKU J494290

PEDFA10632 SHIGESHIGENAMI J10632

IMUFQTF148 ITOSHIGENAMI (IMP USA)

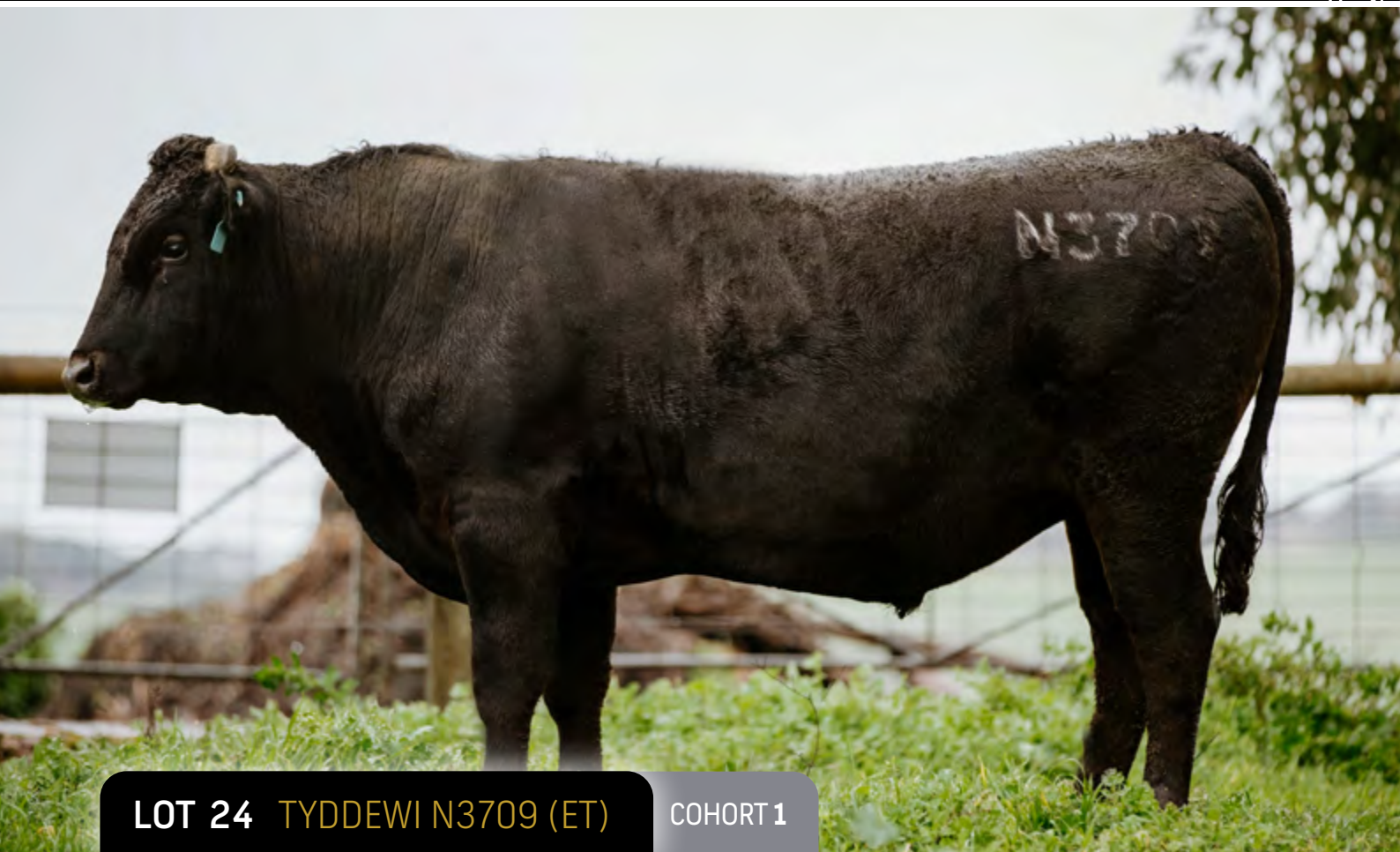
PEDFA661 FUKUYUKI

DAM SYNFN50 SYNERGY 148 SUZU 50E ET

WKSFP1593 WORLD K'S SHIGESHIGETANI 1593

USAFB21531 SYNERGY SHIG SUZITO

USAFB11844 STONYRUN ID 151 SUZITO 3



LOT 24 TYDDEWI N3709 (ET)

COHORT 1



GL	BW	200	400	600	MCW	MILK	CWt	EMA	RUMP	RBV	MS	MF	WBI	SRI	FTI	FII
1.2	0.9	14	16	27	26	1	25	2.8	0.1	0.2	2.1	0.29	205	208	188	175
84%	92%	81%	79%	78%	69%	65%	72%	65%	66%	57%	66%	60%	WAGYU GROUP BREEDPLAN JUNE 2023 RUN 2			

REGO NO. DSWFN3709
DOB 18/9/2017
COLOUR BLACK

SIRE OWNER GRASSLANDS WAGYU
GRADE FULLBLOOD
BLOOD 100%

GENETIC CONDITIONS B3F, CHSF, CL16F, F11C, IARSF
EXPORT STATUS Australia Only
STORAGE LOCATION BEEF BREEDING SERVICES - WACOL
(current)

SIRE OWNER COMMENTS

15 Straws Available

Tyddewi N3709 is a direct son of Mayura Itoshigenami Jnr by Westholme K5236, herself a direct daughter of Westholme Hiramichi Tsuru by a TWA Shikikan dam. N3709 balances Kumanami and Kedaka bloodlines with a backbone of Fujiyoshi.

This bull is used to yield more kilos on the hook from his progeny with minimal sacrifice to marbling.

PEDFA10632 SHIGESHIGENAMI J10632

IMUFQTF148 ITOSHIGENAMI (IMP USA)

PEDFA661 FUKUYUKI

SIRE ADBFA0139 MAYURA ITOSHIGENAMI JNR

WKSFP0100 WORLD K'S SANJIROU

ADBFX0001 MAYURA DAI NI KINNTOU 1

ADBFW0028 MAYURA DAI 2 KINNTOU 7/2

AACFB0545 WESTHOLME NAMIYOSHI 4

AACFF0758 WESTHOLME HIRAMICHI TSURU

WESFZ0084 WESTHOLME HIRA Z0084

DAM AACFK5236 WESTHOLME K5236

TWAFR0007 TWA SHIKIKAN (IMP USA)

AACFD1203 WESTHOLME MIYANISHIKI 2/2

WESFX0484 WESTHOLME TERUMIYA



LOT 25 HAMILTON PARK WAGYU MICHIFUKU 518 (ET)

COHORT 1



GL	BW	200	400	600	MCW	MILK	CWt	EMA	RUMP	RBY	MS	MF	WBI	SRI	FTI	FII
-1.3	-1.9	-7	-4	-3	1	4	8	5	0.9	-0.9	2.8	0.47	186	225	227	234
84%	90%	79%	77%	77%	70%	65%	72%	65%	66%	55%	66%	60%	WAGYU GROUP BREEDPLAN JUNE 2023 RUN 2			

REGO NO. HPWFP0518
DOB 20/6/2018
COLOUR BLACK

SIRE OWNER HAMILTON PARK WAGYU
GRADE FULLBLOOD
BLOOD 100%

GENETIC CONDITIONS B3F, CHSF, CL16FU, F11C, IARSF
EXPORT STATUS Australia Only
STORAGE LOCATION BEEF BREEDING SERVICES - WACOL
(current)

SIRE OWNER COMMENTS

20 straws available

Hamilton Park Wagyu Michifuku 0518 is a new generation genomically enhanced sire, with a pedigree packed with all the golden oldies. He is an early maturing bull flaunting EBV'S in the top 1% for MF and the top 5% for MS – P0518 will not disappoint.

His dam has produced 34 high marbling progeny.

PEDFA201 MONJIRO J11550

WKSFM0164 WORLD K'S MICHIFUKU

PEDFA215 MICHIKO J655635

SIRE SMOFF0126 SUMO CATTLE CO MICHIFUKU F126

IMUFN2294 TF ITOHANA 2 (IMP USA)

SMOFC0152 SUMO CATTLE CO HANA C152

SUMFU2208 SUMO MICHIFUKU U2208

PEDFA10632 SHIGESHIGENAMI J10632

IMUFQTF148 ITOSHIGENAMI (IMP USA)

PEDFA661 FUKUYUKI

DAM PMGFG0002 PEPPERMILL GROVE G002

IMUFN2294 TF ITOHANA 2 (IMP USA)

BYWFW0143 BLACKMORE FUKUTOMI W143

TWAFU0526 TWA SEISHEN


LOT 26 HAWKESBURY SHIGESHIGETANI Q0121 (AI) (ET)

COHORT 1



GL	BW	200	400	600	MCW	MILK	CWt	EMA	RUMP	RBV	MS	MF	WBI	SRI	FTI	FII
-1.4	0.7	16	17	18	14	-6	12	6.9	-3.3	1.5	2.7	0.35	266	288	240	231
83%	89%	87%	82%	79%	70%	64%	73%	65%	66%	56%	66%	60%	WAGYU GROUP BREEDPLAN JUNE 2023 RUN 2			

REGO NO. HWKFQ0121
DOB 15/7/2019
COLOUR BLACK

SIRE OWNER SHADAI WAGYU
GRADE FULLBLOOD
BLOOD 100%

GENETIC CONDITIONS **B3F, CHSF, CL16FU, F11F, IARSF**
EXPORT STATUS Australia Only
STORAGE LOCATION BEEF BREEDING SERVICES - WACOL
(current)

SIRE OWNER COMMENTS

20 straws available

Hawkesbury Shigeshigetani Q0121 offers direct access to the highest indexing female to leave Japan; Kitakeiko Y7.

HWKFQ0121 offers breed-topping carcass traits for a son of WKSFP1593. Q0121's proven dam's most profitable progeny to date have both been sired by WKSFP1593.

This medium framed sire is suitable for heifers, is free of known genetic conditions.

PEDFA201 MONJIRO J11550

WKSFM0139 WORLD K'S HARUKI 2 (FB1614)

PEDFA206 SAKURA 2 J741638

SIRE WKSFP1593 WORLD K'S SHIGESHIGETANI 1593

PEDFA211 TANISHIGE 1526 - KURO KOH

WKSFL0976 WORLD K'S SUZUTANI (FB1617)

PEDFASUZUNAMI SUZUNAMI 472255

PEDFA201 MONJIRO J11550

WKSFM0164 WORLD K'S MICHIFUKU

PEDFA215 MICHIKO J655635

DAM HWKFE0046 HAWKESBURY YUNAFUKU

IMJFAJ2810 KITATERUYASUDO J2810 HONGEN (IMP JAP)

EXLFLV1127 EXCEL MAIKO (IMP USA)

PEDFPJ1719 KITAKEIKO J1719 - Y7



image currently
unavailable

LOT 27 STUD MR NAMI SUZUTANI R325H (AI)

COHORT 1



GL	BW	200	400	600	MCW	MILK	CWt	EMA	RUMP	RBV	MS	MF	WBI	SRI	FTI	F1I
0.5	-1.6	-3	-3	-14	-18	-4	-8	3.5	-1.2	0.3	2.2	0.28	136	170	168	179
83%	89%	79%	77%	76%	69%	65%	71%	66%	66%	58%	66%	62%	WAGYU GROUP BREEDPLAN JUNE 2023 RUN 2			

REGO NO. KSWFR325
DOB 25/3/2020
COLOUR BLACK

SIRE OWNER KENTUCKY STUD WAGYU
GRADE FULLBLOOD
BLOOD 100%

GENETIC CONDITIONS **B3F, CHSF, CL16FU, F11C, IARSF**
EXPORT STATUS Australia Only
STORAGE LOCATION BEEF BREEDING SERVICES - WACOL
(current)

SIRE OWNER COMMENTS

20 straws available

Stud Mr Nami Suzutani 325H is an incredibly well-bred son of Itoshigenami out of a "Brick" solid Suzutani Female. Sporting a sire stack of TF148 Itoshigenami X Shigeshigetani X Itozuru doi TF151 back to his maternal family (Suzutani), the matriarch of the Wagyu breed, there can be little doubt about the quality of carcasses and progeny he will make. His genomic profile from BREEDPLAN shows exactly that! He will change the way USA breeders utilise Fullblood Wagyu semen to change their herds to prime + scores.

This young bull's Genomics come as no surprise as his family has consistently produced carcasses of the highest BMS scores for us. F11 carrier, free of all other known genetic conditions.

PEDFAJ6109 SHIGEKANENAMI J6109

PEDFA10632 SHIGESHIGENAMI J10632

PEDFAJ774695 SHIGEMITSU J774695 (FB4751)

SIRE IMUFQTF148 ITOSHIGENAMI (IMP USA)

PEDFAJ10756 FUKUMASA J10756

PEDFA661 FUKUYUKI

PEDFAJ456691 YUKIZAKURA J456691

WKSFM0139 WORLD K'S HARUKI 2 (FB1614)

WKSFP1593 WORLD K'S SHIGESHIGETANI 1593

WKSFL0976 WORLD K'S SUZUTANI (FB1617)

DAM USAFB21531 SYNERGY SHIG SUZITO

IMUFLT151 ITOZURUDOI TF151 (IMP USA)

USAFB11844 STONYRUN ID 151 SUZITO 3

PEDFB6032 SUZUTAKA 2



image currently
unavailable

LOT 28 STUD MR NAMI SUZUTANI R327H (ET)

COHORT 1



GL	BW	200	400	600	MCW	MILK	CWt	EMA	RUMP	RBV	MS	MF	WBI	SRI	FTI	F1I
-3.0	-3.4	-1	-4	-10	-7	-6	-13	3.2	0.2	0.3	1.0	0.15	107	132	106	115
83%	89%	79%	77%	77%	70%	65%	71%	66%	67%	59%	67%	63%	WAGYU GROUP BREEDPLAN JUNE 2023 RUN 2			

REGO NO. KSWFR327
DOB 27/3/2020
COLOUR BLACK

SIRE OWNER KENTUCKY STUD WAGYU
GRADE FULLBLOOD
BLOOD 100%

GENETIC CONDITIONS **B3F, CHSF, CL16FU, F11F, IARSF**
EXPORT STATUS Australia Only
STORAGE LOCATION BEEF BREEDING SERVICES - WACOL
(current)

SIRE OWNER COMMENTS

20 straws available

Stud Mr Nami Suzutani 327H 327 is a pedigree specimen. He is a direct son of the Great Itoshigenami TF148 who himself sired the number one Bull in the world - Itoshigenami Jr. Itoshigenami Jr semen has previously sold for \$68,000. His maternal grandsire is World K's Shigesigetani, a bull that was thought for generations to be the best, based on his 15K carcasses harvested, 90 % of those grading three full steps above prime. With genomics now available on Shigesigetani, one can see the opinion was spot on. He's not only documented now for the exceptional carcasses he produces, but also a BREEDPLAN genomic wonder. He borders on top index numbers in all important categories, but perhaps most importantly, he displays all these traits with a 90%+ accuracy rating due to his volume of evaluated progeny.. To 327H's pedigree we add Itozuru doi TF151, well known as the greatest all round sire in the breed. KSWFR327's maternal granddam is World K's Suzutani who is well documented as the greatest female in the breed outside of Japan. KSWFR327 is free of known genetic conditions.

PEDFAJ6109 SHIGEKANENAMI J6109

PEDFA10632 SHIGESHIGENAMI J10632

PEDFAJ774695 SHIGEMITSU J774695 (FB4751)

SIRE IMUFQTF148 ITOSHIGENAMI (IMP USA)

PEDFAJ10756 FUKUMASA J10756

PEDFA661 FUKUYUKI

PEDFAJ456691 YUKIZAKURA J456691

WKSFM0139 WORLD K'S HARUKI 2 (FB1614)

WKSFP1593 WORLD K'S SHIGESHIGETANI 1593

WKSFL0976 WORLD K'S SUZUTANI (FB1617)

DAM USAFB21531 SYNERGY SHIG SUZITO

IMUFLTF151 ITOZURUDOI TF151 (IMP USA)

USAFB11844 STONYRUN ID 151 SUZITO 3

PEDFB6032 SUZUTAKA 2


LOT 29 DOOR KEY Q0102 (AI) (ET)
COHORT 1


GL	BW	200	400	600	MCW	MILK	CWt	EMA	RUMP	RBV	MS	MF	WBI	SRI	FTI	FII
1	1.4	11	13	17	19	-2	13	4.6	-0.8	-0.1	3.2	0.43	270	301	263	257
89%	95%	91%	87%	87%	73%	66%	76%	70%	72%	66%	69%	61%	WAGYU GROUP BREEDPLAN JUNE 2023 RUN 2			

REGO NO. LSRFQ0102
DOB 31/7/2019
COLOUR BLACK

SIRE OWNER DOOR KEY
GRADE FULLBLOOD
BLOOD 100%

GENETIC CONDITIONS B3FU, CHSFU, CL16FU, F11FU, IARSF
EXPORT STATUS Australia Only
STORAGE LOCATION BEEF BREEDING SERVICES - WACOL
(current)

SIRE OWNER COMMENTS

10 Straws Available

Door Key Q0102 in his working clothes after backing up 58 cows as a yearling with only 4 empty females recorded from a six-week joining.

Semen sold to Hamilton Park Wagyu for \$550/straw at the AWA 2021 Elite Wagyu Auction.

Q0102 will be used heavily again as an AI sire in Door Key Wagyu's Spring joining program.

PEDFA201 MONJIRO J11550

WKSFM0164 WORLD K'S MICHIFUKU

PEDFA215 MICHIKO J655635

SIRE SMOFF0154 SUMO CATTLE CO MICHIFUKU F154

IMUFR3258 TF TERUTANI 40/1 (IMP USA)

SMOFC0016 SUMO CATTLE CO TANI C016

IMUFR3256 TF HIKOHIME 34/3 (IMP USA)

IMUFQTF148 ITOSHIGENAMI (IMP USA)

LFDFD12558 LONGFORD MR AWESOME

LFDFZ0570 LONGFORD LFDB570

DAM LSRFM0281 DOOR KEY M0281

WKSFM0139 WORLD K'S HARUKI 2 (FB1614)

LSRFJ0409 DOOR KEY J409

LSRFD0211 DOOR KEY F D0211

**LOT 30 MARATHON MICHIFUKU P0011 (ET)**

COHORT 1



GL	BW	200	400	600	MCW	MILK	CWt	EMA	RUMP	RBV	MS	MF	WBI	SRI	FTI	FII
-0.1	6.2	27	57	74	76	-2	69	-1	-1	-0.5	2.1	0.37	313	291	252	208
88%	95%	95%	85%	91%	76%	69%	78%	66%	67%	56%	68%	61%	WAGYU GROUP BREEDPLAN JUNE 2023 RUN 2			

REGO NO. MSMFP0011
DOB 25/11/2018
COLOUR BLACK

SIRE OWNER MARATHON WAGYU
GRADE FULLBLOOD
BLOOD 100%

GENETIC CONDITIONS **B3F, CHSF, CL16FU, F11F, IARSF**
EXPORT STATUS Australia Only
STORAGE LOCATION BEEF BREEDING SERVICES - WACOL
(current)

SIRE OWNER COMMENTS

20 straws available

P0011s sire is Sumo Cattle Co Michifuku F154 who is well known in the industry for his maternal growth traits. P0011s dam, Codenwarra X0097 is a first generation Terutani 40/1 daughter who also brings strong maternal traits to the joining. P0011 is a quiet bull with outstanding carcass traits.

As of April 2023, P0011's progeny averaged 174kg at weaning. The 2022 calving resulted in 119 P0011 progeny, 73 of which were male.

Marathon Wagyu is eagerly waiting to prove out P0011 over the next few years.

PEDFA201 MONJIRO J11550

WKSFM0164 WORLD K'S MICHIFUKU

PEDFA215 MICHIKO J655635

SIRE SMOFF0154 SUMO CATTLE CO MICHIFUKU F154

IMUFR3258 TF TERUTANI 40/1 (IMP USA)

SMOFC0016 SUMO CATTLE CO TANI C016

IMUFR3256 TF HIKOHIME 34/3 (IMP USA)

IMUFJTF40 TERUTANI J2494 TF40 (IMP JAP)

IMUFR3258 TF TERUTANI 40/1 (IMP USA)

PEDFA2453 TF DAI 2 KINNTOU 3

DAM MCKFX0097 CODENWARRA FX0097

WKSFM0139 WORLD K'S HARUKI 2 (FB1614)

SUMFV2073 SUMO RUKI V2073

IMUFR3387 TF HIKOHIME 12/3 (IMP USA)

**LOT 31 TAKEDA FARM KINUYASU DOI (ET)**

COHORT 1



GL	BW	200	400	600	MCW	MILK	CWt	EMA	RUMP	RBV	MS	MF	WBI	SRI	FTI	F1I
2.8	-0.6	-5	-8	-17	-22	-4	-6	2	1.6	-0.3	0.6	0.09	37	63	55	67
76%	87%	76%	73%	72%	61%	55%	64%	55%	56%	43%	56%	49%	WAGYU GROUP BREEDPLAN JUNE 2023 RUN 2			

REGO NO. TFWFM0248
DOB 28/5/2016
COLOUR BLACK

SIRE OWNER WAGYU SEKAI INC.
GRADE FULLBLOOD
BLOOD 100%

GENETIC CONDITIONS B3F, CHSF, CL16C, F11F, IARSFU
EXPORT STATUS Australia Only
STORAGE LOCATION BEEF BREEDING SERVICES - WACOL
(current)

SIRE OWNER COMMENTS

20 straws available

100% Tajima Blood TF Kinuyasu Doi is a result from embryos that had long been forgotten. The sire Kimifuku 3 is sired by the Tajima genetic giant Tanifuku Doi (listed in Kenichi Ono's Top 100) from the well-known maternal line known as "Kikutsuru". The maternal side of Kimifuku 3 is also of Tajima Royalty and well known as the Mitsufuku line. Kimifuku 3 is a combination of the most established Tajima lines, however extremely limited straws of semen were imported on this bull and direct progeny are rare. The dam, Kinu 1 was an original import from Japan in 1995 and one of the very few 100% Tajima females to leave the country. She is sired by Kikuyasu Doi, a line known for good marbling, meat colour, body depth, body length and good maternal abilities. The second dam, Kinu is from the Oku Doi line of Tajima. Semen from a full brother, Kikufuku Doi sold for \$1000 / straw in the EWS.

PEDFAJ472 YASUTANI DOI J472

PEDFAJ1606 TANIFUKU DOI J1606

PEDFAJ978542 KIKUTSURU J978542

SIRE PEDFX456 KIMIFUKU 3

PEDFAJ10787 KIKUTERU DOI J10787

PEDFV456 YUKIFUKU

PEDFT456 MIYUKI

PEDFAJ9285 KIKUNORI DOI J9285

PEDFA301 KIKUYASU DOI 575

PEDFA304 MURAYOSHI J74233

DAM PEDFB2460 TF KINU 1

PEDFA527 SHIROASA J8992

PEDFA513 KINU

PEDFA547 UTA

Launched in 2021, the first joinings for the nationally and internationally recognised AWA-PTP have now been completed. The AWA-PTP program is set to continue for ten years and seven breeding cycles.



“ We’ll be able to test the best breeding for these high performance traits in these sires that are going to come through and see how well their progeny performs ...

Dr Matt McDonagh
Australian Wagyu Association, CEO

Percentile bands for 2021 born Wagyu calves

For benchmarking, the average Wagyu BREEDPLAN EBVs for the 2021 born calves are tabled

	GL	BW	200	400	600	MCW	MILK	SS	CWt	EMA	RUMP	RBY	MS	MF	WBI\$	SRI\$	FTI\$	F1I\$
TOP 1%	-3.1	-2.9	32	53	73	76	8	2	62	8.8	4.3	1.9	2.9	0.45	298	299	260	245
TOP 5%	-2.1	-1.8	25	41	57	59	6	1.2	48	6.7	3	1.4	2.3	0.37	253	255	220	207
TOP 10%	-1.6	-1.1	21	35	49	51	4	0.9	41	5.6	2.4	1.1	2.1	0.33	232	232	199	186
TOP 15%	-1.3	-0.7	19	31	44	45	4	0.6	36	4.9	1.9	0.9	1.9	0.3	217	216	185	173
TOP 20%	-1	-0.4	17	28	39	40	3	0.5	33	4.3	1.5	0.7	1.7	0.28	205	205	174	162
TOP 25%	-0.8	-0.1	16	26	36	37	2	0.3	30	3.8	1.2	0.6	1.6	0.26	196	195	165	154
TOP 30%	-0.7	0.2	14	24	33	33	2	0.2	27	3.4	1	0.5	1.5	0.24	187	187	158	147
TOP 35%	-0.5	0.4	13	22	30	30	1	0.1	25	3	0.7	0.4	1.3	0.22	179	179	151	140
TOP 40%	-0.3	0.6	12	20	27	28	1	0	22	2.7	0.4	0.3	1.2	0.21	172	171	145	133
TOP 45%	-0.2	0.9	11	18	25	25	0	-0.1	20	2.3	0.2	0.2	1.2	0.19	165	164	138	127
TOP 50%	-0.1	1.1	10	17	22	22	0	-0.2	18	2	-0.1	0.1	1.1	0.18	158	157	132	121
TOP 55%	0.1	1.3	9	15	20	20	0	-0.3	16	1.7	-0.3	0	1	0.16	151	150	127	115
TOP 60%	0.2	1.5	8	13	18	17	-1	-0.4	13	1.3	-0.6	-0.1	0.9	0.15	144	144	121	109
TOP 65%	0.4	1.8	7	11	15	14	-1	-0.5	11	1	-0.8	-0.1	0.8	0.13	137	137	115	103
TOP 70%	0.5	2	6	10	13	11	-2	-0.6	9	0.6	-1.1	-0.2	0.7	0.12	130	130	108	96
TOP 75%	0.7	2.3	5	8	10	8	-2	-0.7	6	0.3	-1.4	-0.4	0.6	0.1	122	122	102	89
TOP 80%	0.9	2.6	3	6	7	5	-3	-0.9	4	-0.2	-1.7	-0.5	0.4	0.08	114	114	94	82
TOP 85%	1.1	3	2	3	3	1	-4	-1	0	-0.7	-2.1	-0.6	0.3	0.06	104	104	86	73
TOP 90%	1.3	3.5	0	0	-2	-5	-5	-1.2	-4	-1.4	-2.6	-0.8	0.1	0.03	91	91	75	62
TOP 95%	1.7	4.2	-3	-5	-8	-12	-6	-1.5	-10	-2.3	-3.3	-1	-0.2	-0.01	71	72	59	45
TOP 99%	2.5	5.6	-8	-14	-21	-25	-8	-1.9	-21	-4	-4.7	-1.5	-0.7	-0.11	34	37	27	13
Low Value	4.9	10.8	-21	-35	-48	-65	-14	-3	-43	-8.9	-8.4	-3	-2.1	-0.4	-117	-80	-57	-77

IMPORTANT NOTICE

It is very important that you appreciate when viewing the AWA database that the information contained on the AWA database, including but not limited to pedigree, DNA information, Estimated Breeding Values (EBVs) and Index values, is based on data supplied by members and/or third parties. Whilst every effort is made to ensure the accuracy of the information reported through AWA, AWA officers and employees assume no responsibility for its content, use or interpretation. AWA disclaims all liability (including without limitation, liability in negligence) for all expenses, losses, damages and costs you may incur as a result of the use by you of the data on this AWA database and the information supplied by ABRI and AGBU being inaccurate or incomplete in any way for any reason.

Regarding EBVs and Index values, it is very important to appreciate, and you need to be aware that:

- » EBVs are derived using Wagyu Single-Step BREEDPLAN technology developed independently by the Animal Genetics and Breeding Unit (AGBU), using the information contained within the AWA database.
- » AGBU is a joint venture of NSW Department of Primary Industries and the University of New England, which receives funding for this purpose from Meat and Livestock Australia Limited.
- » AWA relies solely on advice provided by AGBU and ABRI in accepting Wagyu Single-Step BREEDPLAN software.
- » EBVs published in Wagyu Single-Step BREEDPLAN are estimates of genetic potential of individual animals and may not reflect the raw animal phenotype.
- » EBVs can only be directly compared to other EBVs

calculated in the same monthly Wagyu Group BREEDPLAN analysis.

Regarding pedigree and DNA testing results submitted to the AWA, it is very important to appreciate, and you need to be aware that:

- » Pedigree and DNA data submitted and supplied to AWA may have errors in it which cannot be detected without further DNA testing.
- » Technology may have advanced since a particular test was undertaken so that previous inaccuracies which were not detectable are now able to be detected by current testing technology.
- » AWA estimates that less than 1% of the pedigree entries, ownership or breeding details in the AWA Herdbook may have errors or which may be misleading. For this reason, users ought to consider if they need to obtain independent testing of the relevant animal (if possible) to ensure that the data is accurate.

Regarding prefectural content, it is very important to appreciate, and you need to be aware that:

- » Prefectural content is based on the estimation of prefectural origin from Japanese breeding records of 201 foundation sires and 168 foundation dams. As genotype-based parent verification is not used in Japan, and full Japanese registration certificates are not available for all foundation animals, exact prefectural composition for these sires and dams cannot be validated.
- » The calculation of prefectural content for Australian Herdbook animals relies on the accuracy of pedigree records and DNA samples provided by AWA members.
- » The reporting of prefectural content for animals within the AWA Herdbook relies on the calculation provided by ABRI.

If you consider that you do not understand or appreciate the nature and extent of the data provided on this website or the EBVs of a particular animal, then AWA strongly recommends that you seek independent expert advice.

Wagyu BREEDPLAN EBVs

WAGYU BreedObject \$INDEXES

BreedObject \$Indexes, which utilise Wagyu BREEDPLAN EBVs, are now available and allows selection of Wagyu seedstock based on profitability for different commercial production systems. Four Wagyu BreedObject \$Indexes have been developed to date:

Self-replacing Breeding \$Index (SRI)

Wagyu Breeder \$Index (WBI)

Wagyu Fullblood Terminal \$Index (FTI)

Wagyu F1 Terminal \$Index (F1I)

Each of the \$Indexes are targeted specifically to a defined Wagyu production and market scenario and producers should identify and use the index that best suits their purpose. It is not appropriate to compare index values of different \$Indexes as they are based on different production model assumptions. It is not the index with the highest \$ value that you should use, it is the index that best reflects your production system.

BreedObject \$Indexes target economic breeding objectives based on average herd and market conditions and have generally targeted the main markets within the main production systems, combining genetic information within BREEDPLAN into one EBV for each \$Index that considers production costs and realised value.



Self-replacing Breeding Index (SRI)

The Self-replacing Index can be used to select Fullblood bulls that will produce more profitable females when these are retained in Fullblood or Purebred herds, in addition to profitable slaughter progeny.

The SRI estimates the genetic differences between animals in terms of net profitability per cow joined for production of replacement females and slaughter steers to a carcass weight of 435kg at 32 months of age and a 385kg carcass from surplus heifers at 29 months of age. In terms of relative economic importance, the SRI places the following emphasis on these main traits: 41% on marble score (MS); 14% on Residual Feed Intake (RFI) feedlot; 12% on sale liveweight (which will reflect the growth potential and therefore carcass weight of an animal); 9% on meat yield; 6% on dressing percentage and 23.5% placed on other cow and calf traits.

Wagyu Breeder Index (WBI)

The Wagyu Breeder Index estimates the genetic differences between animals in net profitability per cow joined in a commercial Fullblood or Purebred self-replacing herd that has a low-input, grass-based production system. Heifers are retained for breeding and steers and surplus females are sold as feeders for feedlot finishing.

Steers are assumed to be slaughtered at 32 months after 550 days of feedlot finishing targeting 460kg carcasses.

Heifers are retained for breeding and therefore maternal traits are of importance. Marbling is targeted at breed average with optimised growth.

In terms of relative economic importance, the WBI places the following emphasis on these main traits: 37% on marble score (MS); 12% on sale liveweight; 9% on meat yield; 7% on dressing percentage and 13% placed on other cow and calf traits.

Fullblood Terminal Index (FTI)

The Fullblood Terminal Index has an increased weighting on the Marble Score EBV and can be used to select bulls to produce profitable slaughter progeny where none are retained for breeding.

The FTI estimates the genetic differences between animals in terms of net profitability per cow joined based on production of slaughter stock only, with a 435kg carcass from steers at 32 months of age and a 385kg carcass from heifers at 29 months of age. In terms of relative economic importance, the FTI places the following emphasis on these main traits: 64% on MS; 11% on Residual Feed Intake (RFI) feedlot; 9% on sale liveweight; 7% on meat yield; 5% on dressing percentage and 3% placed on other young animal traits and 0% on maternal traits.

F1 Terminal Index (F1I)

The F1 Terminal Index has an increased weighting on the Marble Score EBV and can be used to select bulls to produce profitable F1 slaughter progeny where none are retained for breeding.

The F1 Index estimates the genetic differences between animals in terms of net profitability cow joined based on production of a 420kg carcass from steers and a 387kg carcass from heifers at 28 months of age. In terms of relative economic importance, the F1 Index places the following emphasis on these main traits: 68% on MS; 9% on Residual Feed Intake (RFI) feedlot; 4% on sale liveweight; 6% on meat yield; 4% on dressing percentage and 9% placed on other young animal traits and 0% on maternal traits.

Genetic conditions

GENETIC CONDITIONS IN WAGYU CATTLE

All breeds of cattle, have undesirable genetic conditions. Fortunately, advances in molecular genetics have facilitated the development of DNA tests for the conditions which enable them to be managed. Breed societies are at the forefront of developing strategies to manage undesirable genetic conditions and seedstock members are leading the industry with their uptake of this technology.

KNOWN GENETIC CONDITIONS OF WAGYU:

SPHEROCYSTOSIS (B3) - Cattle that are homozygous (two copies of the recessive allele) have pernicious anaemia (bleeding caused by the abnormal red blood cells). Death normally occurs within the first seven days after birth. Some cases live to adulthood but there is a severe retardation in growth.

CHEDIAK HIGASHI SYNDROME (CHS) - Cattle that are homozygous (two copies of the recessive allele) have a reduced immune response to disease which reduces their ability to resist bacterial infection. Blood is slow to coagulate so often the first indicator is unusual umbilical cord bleeding at calving. Cattle with this syndrome often have an unusually pale coat colour.

CLAUDIN 16 DEFICIENCY (CL16) - Cattle that are homozygous (two copies of the recessive allele) have terminal kidney failure and the onset can occur any time from late adolescence. Cattle are unlikely to live more than six years.

FACTOR XI DEFICIENCY (F11) - Cattle that are homozygous (two copies of the recessive allele) show prolonged bleeding time after castration or dehorning. It is also possible that Carrier x Carrier matings have increased difficulty producing viable fertilised embryos or full term pregnancies and may be repeat (return to cycle) breeders.

NOTE - This is generally a non-lethal recessive condition with affected animals being able to live as normal. This Australian Wagyu population has a high frequency of F11 carriers, which makes it an important genetic condition to manage.

IARS DISORDER - Also known as perinatal weak calf syndrome, the disorder results in death within the last few weeks of gestation or few days of life. A mutation in the IARS gene (isoleucyl-tRNA synthetase) causes a reduction in activity of the enzyme for protein synthesis for a developing embryo and newborns. Calves affected by this disorder exhibit anaemia, depression, weakness, variable body temperature, difficulty nursing, growth retardation, and increased susceptibility to infection.

Carriers of genetic conditions may be useful in Terminal breeding programs where all the progeny are slaughtered and not used for breeding purposes.

For more information about the inheritance and management of genetic conditions visit

website  wagyu.org.au

CODE EXPLANATION

The first two, three or four characters vary with the genetic condition ie. B3, CHS, CL16, F11, F13 or IARS

__F Indicates that the sample submitted for this animal **has been tested** and found to be **FREE** of the causative mutation responsible for the indicated genetic condition. This animal is homozygous free, meaning that it has two copies of the normal variant (or allele) of the gene.
Shown in **GREEN** in the lot listing within the catalogue.

__C Indicates that the sample submitted for this animal **has been tested** and found to be a **CARRIER** of the causative mutation responsible for the indicated genetic condition. This animal is heterozygous for the mutation, meaning that it has one mutant allele and one normal allele. This animal could pass the mutation to approximately half of its progeny.

___% Indicates that, based on pedigree information supplied by the breeder of the animal, the animal **has a chance to be a carrier** of the mutation responsible for the indicated genetic condition but **HAS NOT BEEN TESTED**. The higher the indicated percentage, the larger the chance the animal may be a carrier

__FU Indicates that, based on pedigree information supplied by the breeder of the animal, the animal is **expected to be free** of the mutation responsible for the indicated genetic condition. However, this animal **HAS NOT BEEN TESTED** for the causative mutation and the AWA gives no guarantee as to the animal's "free" status.

__A Indicates that the sample submitted for this animal **has been tested** and found to be **AFFECTED** by the genetic condition. This animal is homozygous for the mutation responsible for the genetic condition and has two copies of the mutant variant of the gene.

DISCLAIMER

The Single-Step Wagyu BREEDPLAN analysis software is a Wagyu-specific multi-trait genetic analysis platform developed by the Animal Genetics and Breeding Unit using genomic data in addition to Best Linear Unbiased Prediction analysis of pedigree and performance data.

Single-Step Wagyu BREEDPLAN is licensed through the Agricultural Business Research Institute. EBVs are generated on a monthly basis to capture new genomic and performance data as it is contributed by AWA members.

EBV figures may change as a result of contribution of genomic and performance data by AWA members.



Suite 6, 146 Marsh Street,
Armidale NSW AUSTRALIA 2350

email office@wagyu.org.au

phone 02 8880 7700

www.wagyu.org.au    

