

Vytelle. Always Progressing



Vytelle advances the RIGHT genetics FASTER





Vytelle Mission and Purpose

To ensure meat and milk are **viable** and **competitive** food choices for future generations.

Vytelle Advances the Right Genetics Faster

Fast Forward Genetic Progress for Sustainable Production

PHENOTYPE DATA CAPTURE



Collect individual animal feed intake, growth and behavior data

Monitor and validate performance

IN VITRO FERTILIZATION



Multiply elite genetics with hormone-free in vitro fertilization (IVF)

Shorten generation intervals

Improve reproductive efficiency

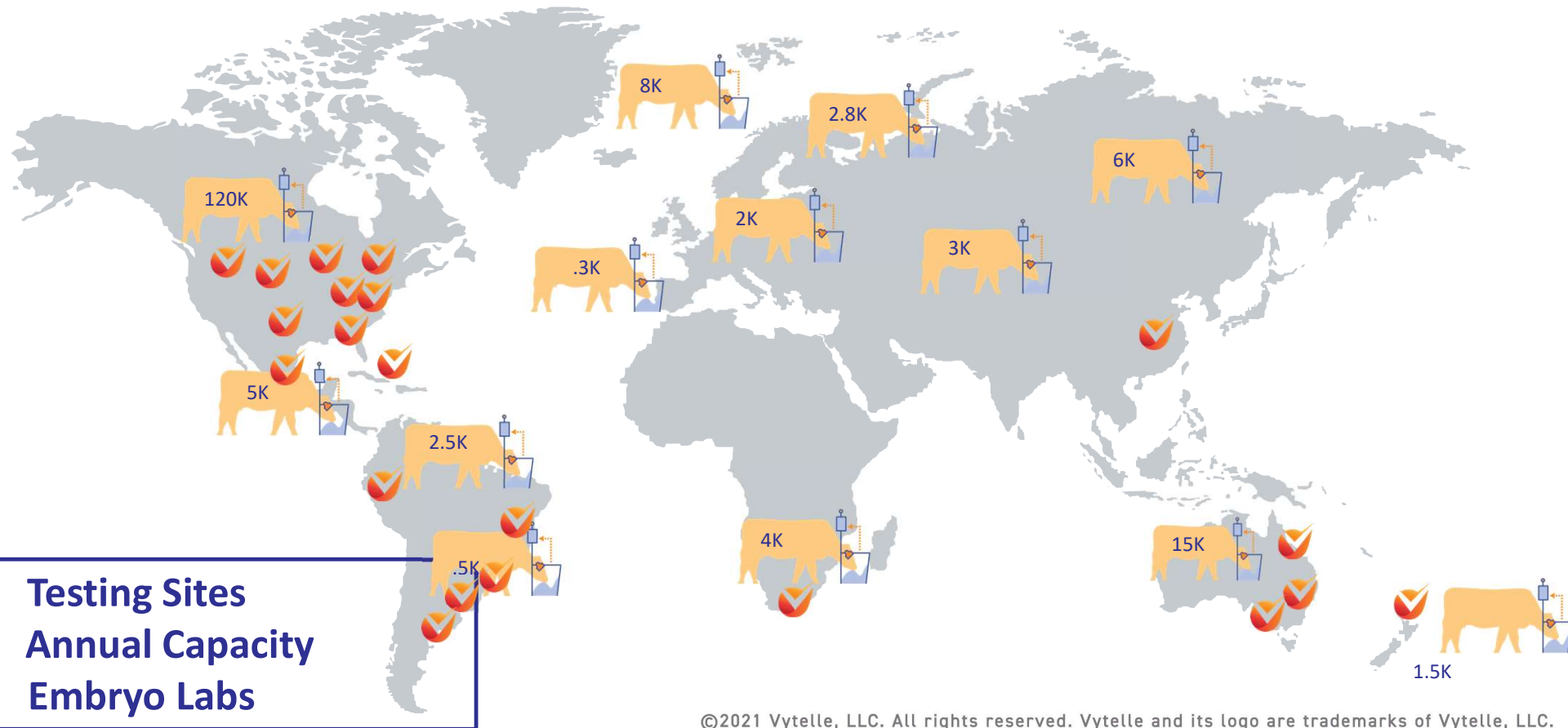
©2021 Vytelle, LLC. All rights reserved. Vytelle and its logo are trademarks of Vytelle, LLC.

Vytelle By The Numbers

- **2018** Business Formed
- **21** Global Vytelle ADVANCE Labs
 - **26** Countries served
- **1** Global Headquarters: Kansas City
 - **1** Global R&D Lab: Texas
 - **660,587** Embryos Made



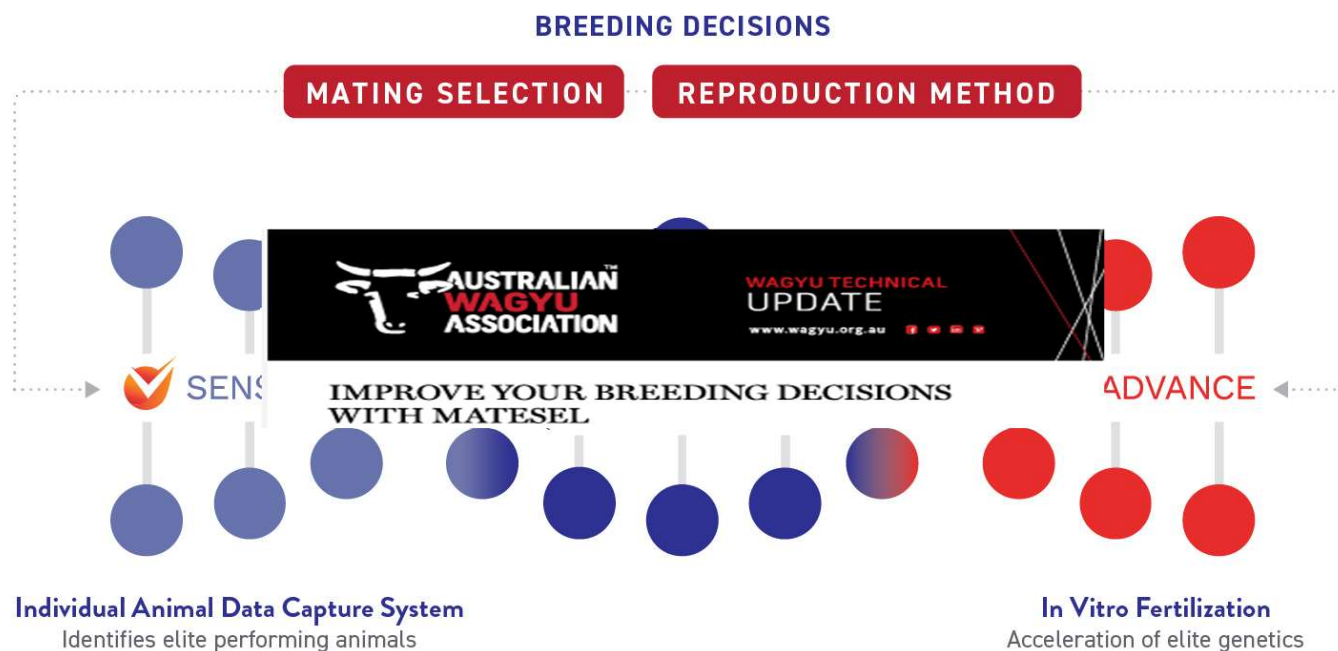
Vytelle serves customers in 26 countries representing 55% of the global cattle population



©2021 Vytelle, LLC. All rights reserved. Vytelle and its logo are trademarks of Vytelle, LLC.

Who to Breed, How to Breed

 **Vytelle ACCELERATES THE RIGHT GENETICS FASTER**



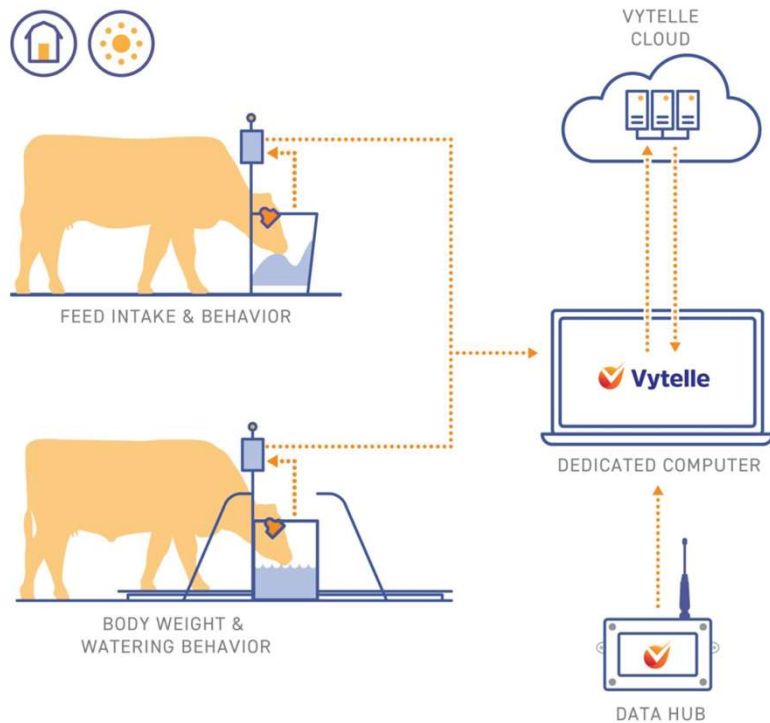


Why Feed Efficiency Matters





How the program works



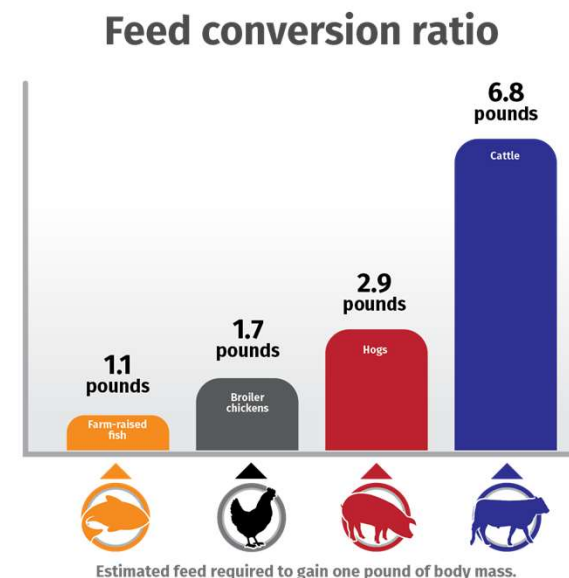
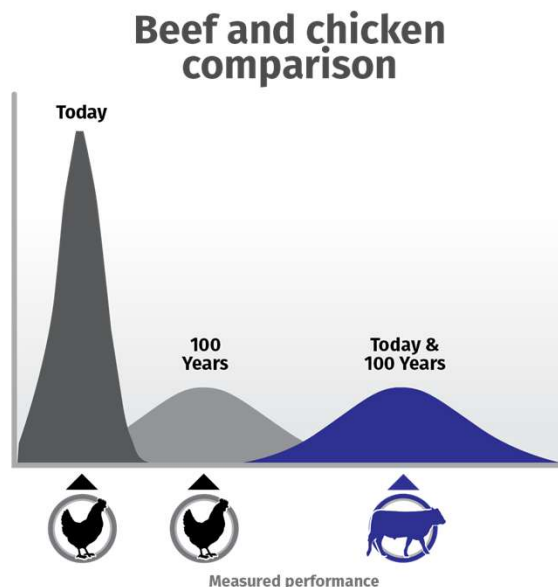
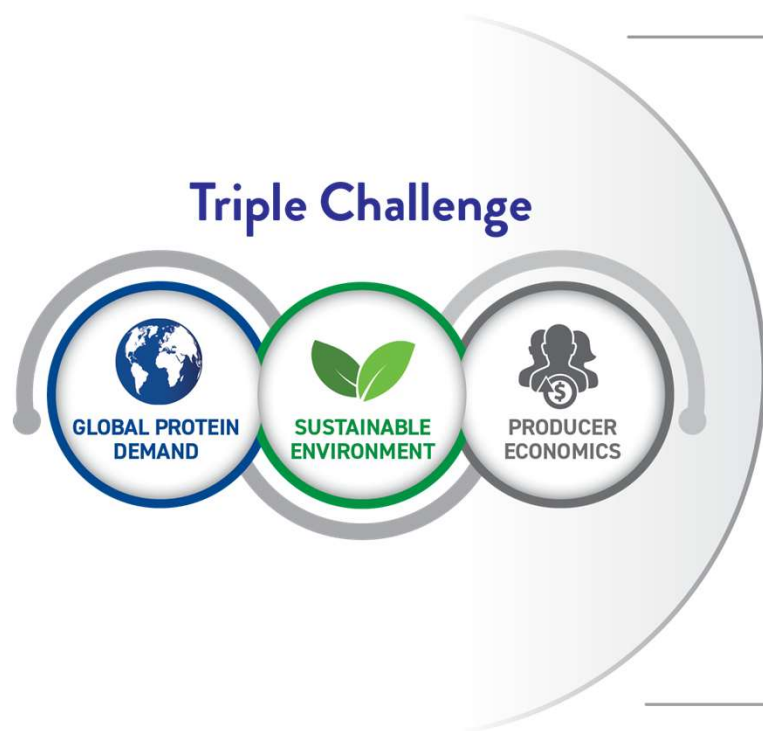
Dashboard Reporting
Daily Alerts
End-of-Monitoring Period Analytics for Decision



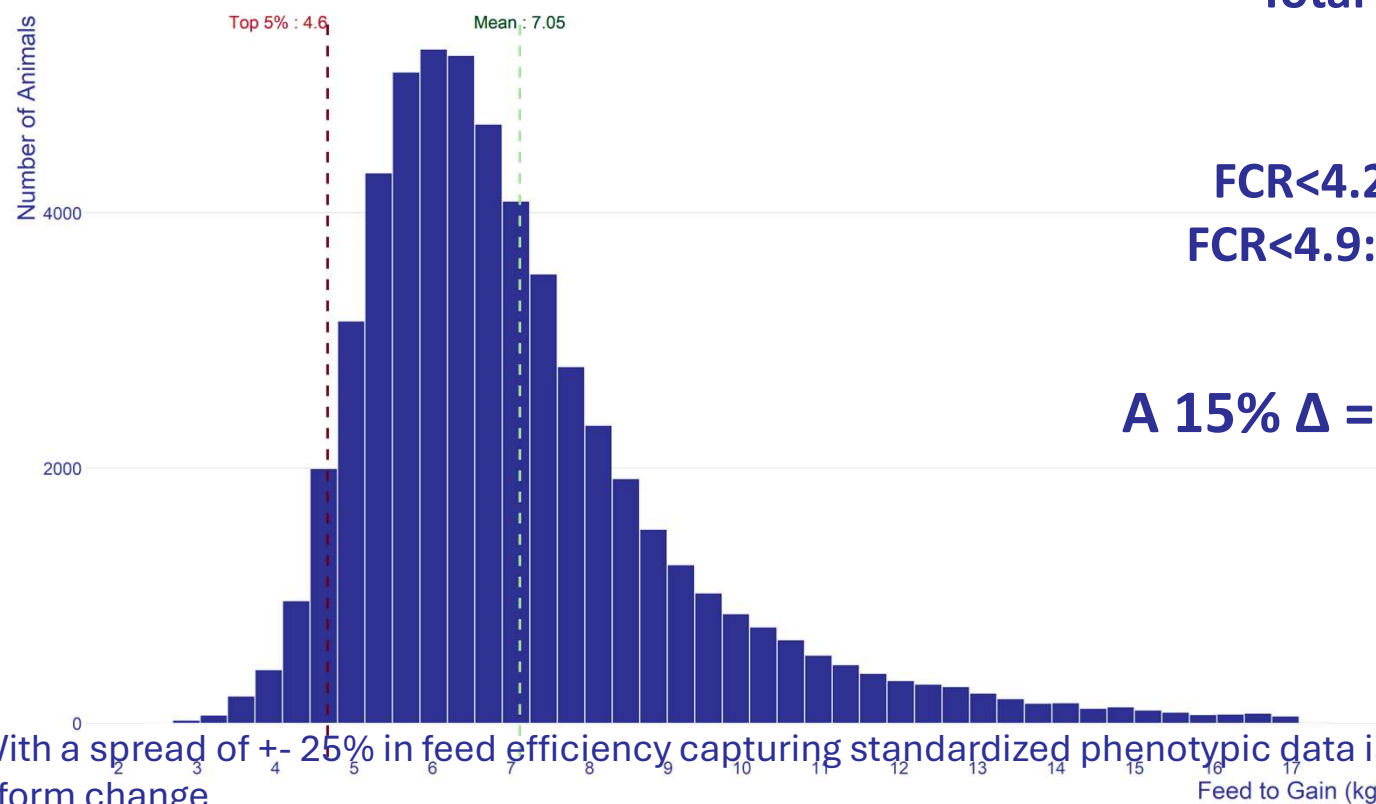
©2021 Vyte

ytelle, LLC.

Genetic Progress is a Proven Solution



Feed Efficiency Opportunity



Total Records: 56,000

Average: 7.05

FCR<4.2: 2% population

FCR<4.9: 10% population

A 15% Δ = FCR of 5.99:1

Wagyu Progeny Test Program

- Vytelle is the official Feed Efficiency Partner to the AWA
- 4 Locations testing in Australia
- The AWA offers a fellowship scholarship that can be applied to having a Vytelle SENSE feed efficiency system to test Wagyu and submit data, learn more here [Wagyu Fellowship](#)
- Ask Vytelle about the AWA Special member pricing
 - Lisa.Rumsfeld@vytelle.com

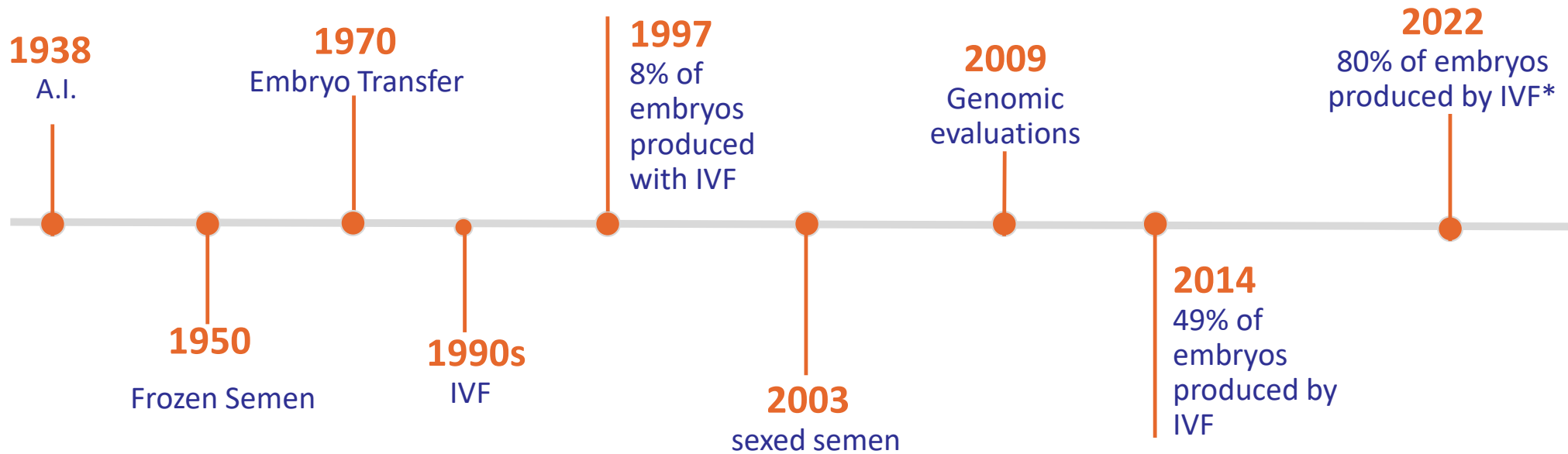




Sustainable Genetics Faster With IVF



Genetic Progress through Technology

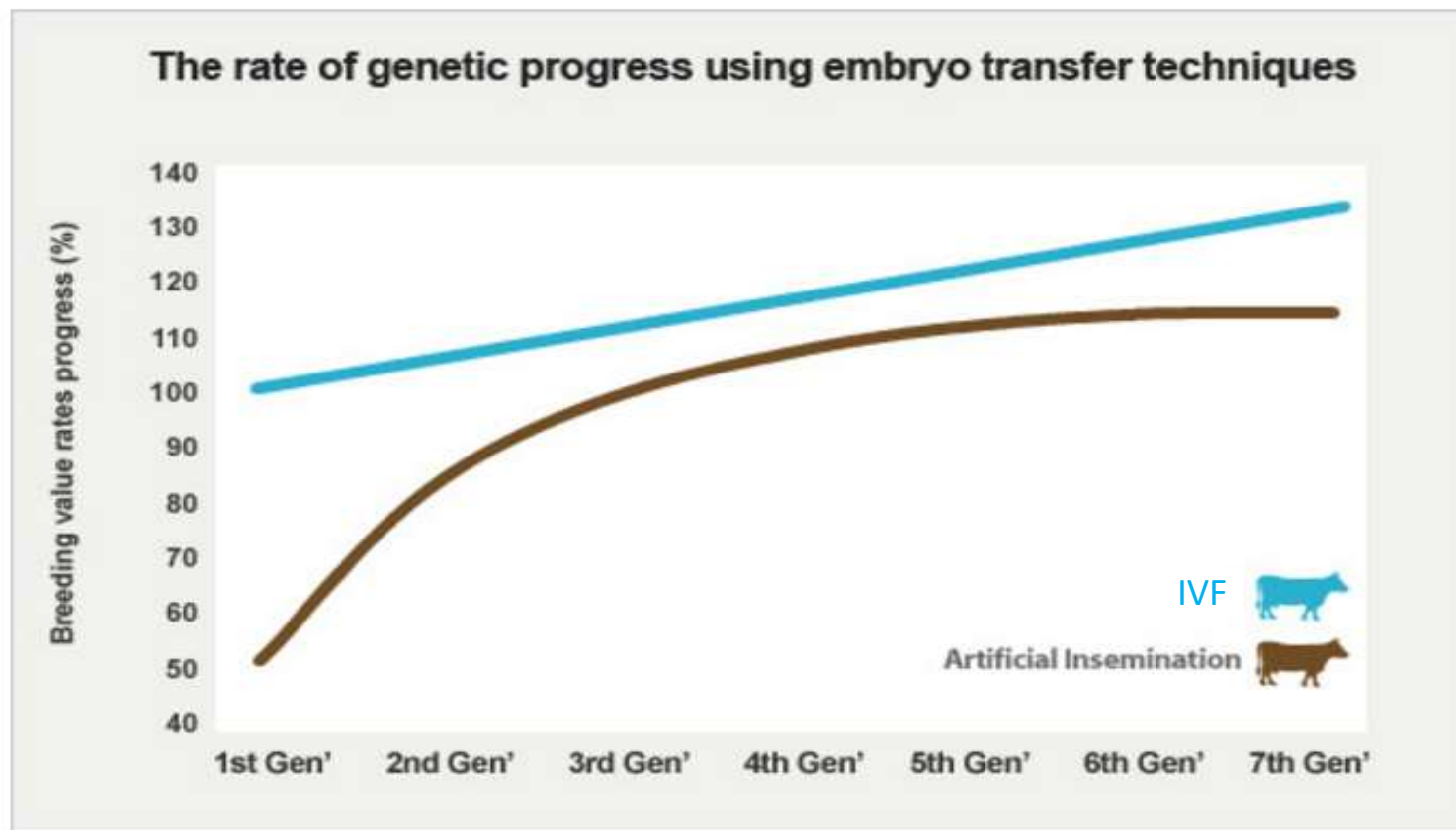


* IETS Data

©2021 Vytelle, LLC. All rights reserved. Vytelle and its logo are trademarks of Vytelle, LLC.

Reproductive Technologies Comparison

A.I Vs IVF



re trademarks of Vytelle, LLC.

Reproductive Technologies Comparison (IVD Vs IVF)

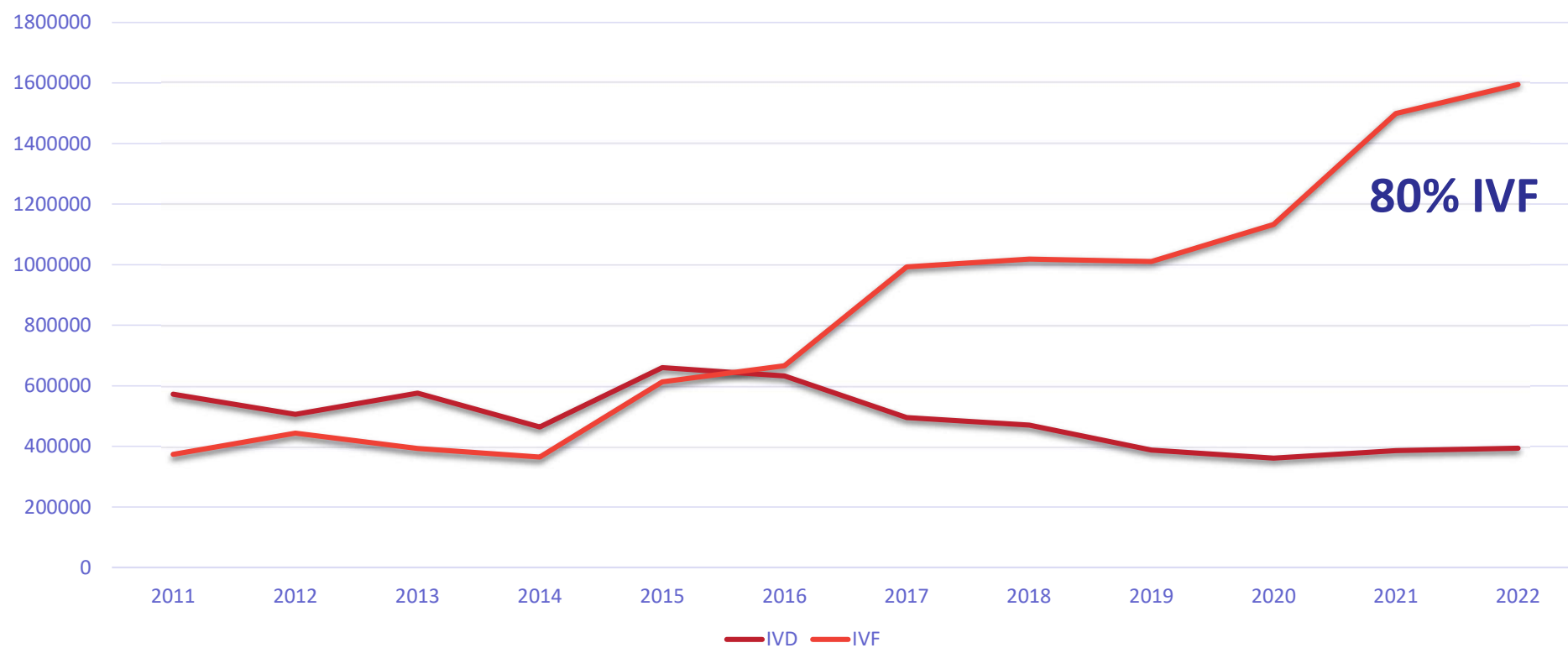


MORE LIVE CALVES		
	CONVENTIONAL FLUSHING	VYTELLE IVF
TIME BETWEEN COLLECTIONS	35 days	14 days
LENGTH OF SEASON	120 days	120 days
COLLECTIONS PER SEASON	3.0	8.0
EMBRYOS PER COLLECTION	6.0	5.0
EMBRYOS PER SEASON	18	40
PREGNANCY RATE	55%	50%
TOTAL CALVES PER SEASON	10	20

IVF Trends Globally- *MOET* vs *IVF*



World IVD vs IVF*
2022 = 1.9M Total

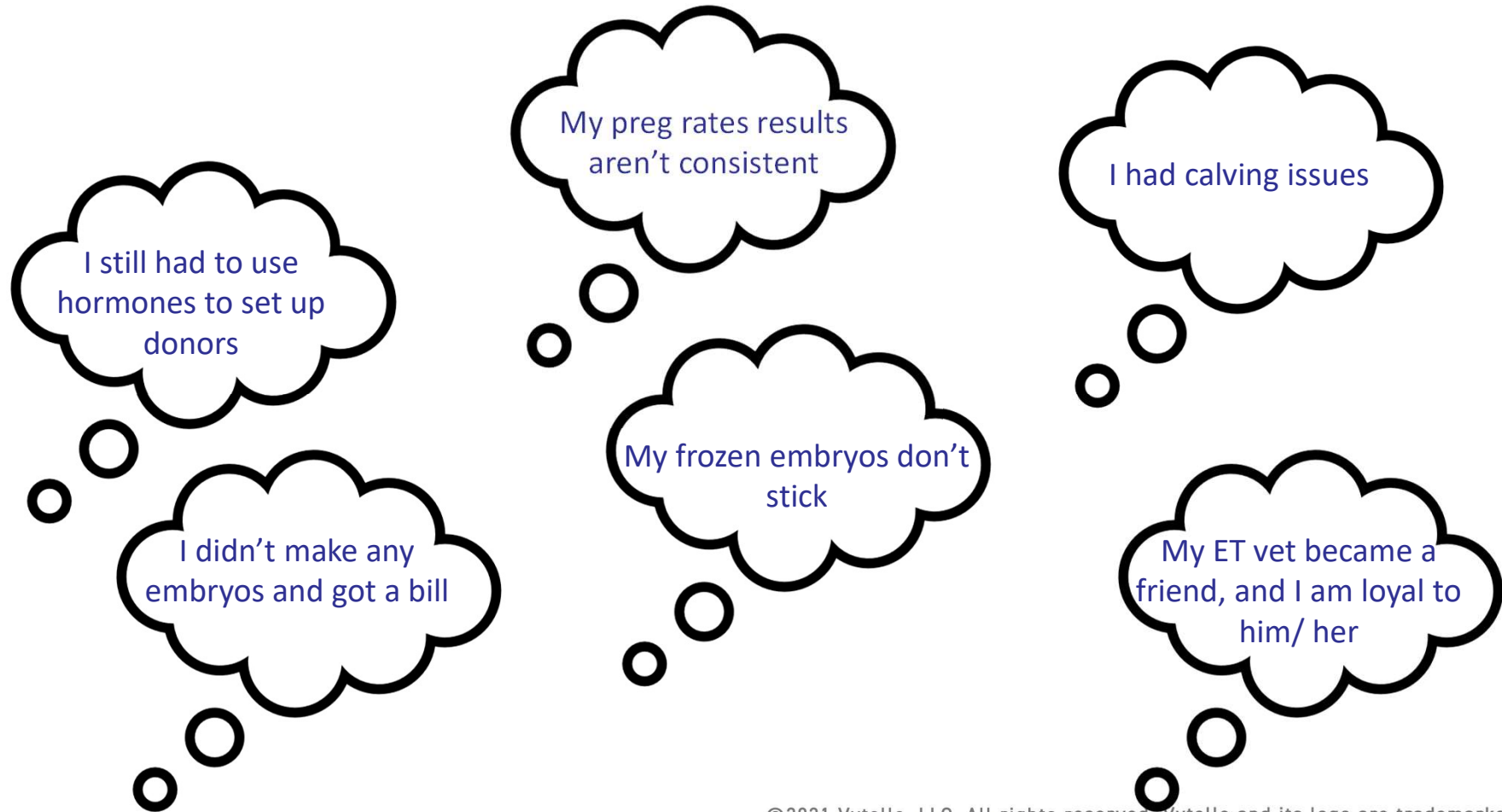


Fonte: IETS – Data Retrieval Committee Report

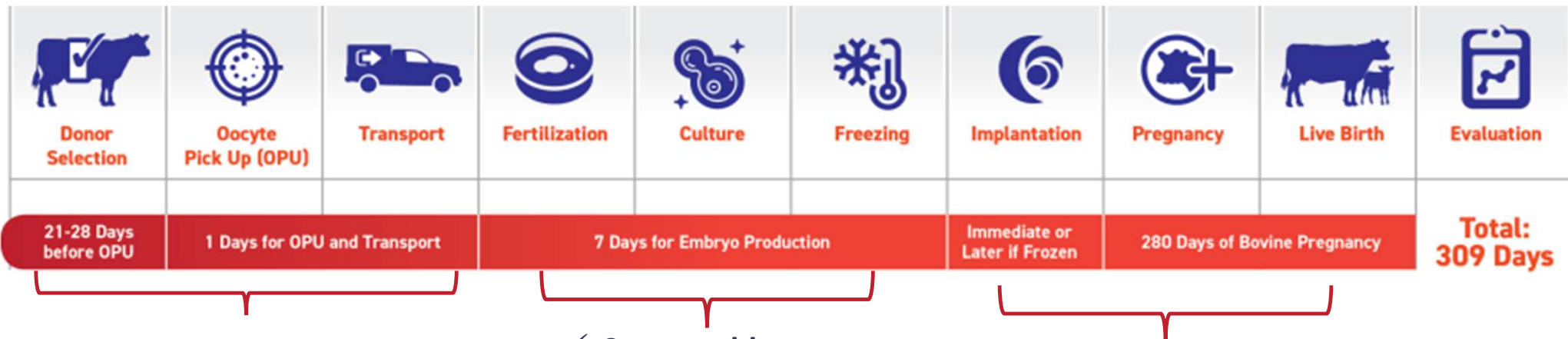
* IETS Data

©2021 Vytelle, LLC. All rights reserved. Vytelle and its logo are trademarks of Vytelle, LLC.

What people has experienced in the last 20 years



COMPLETE PROCESS

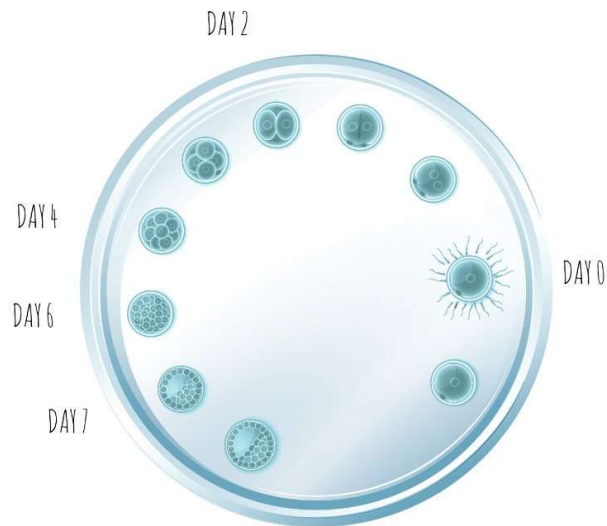
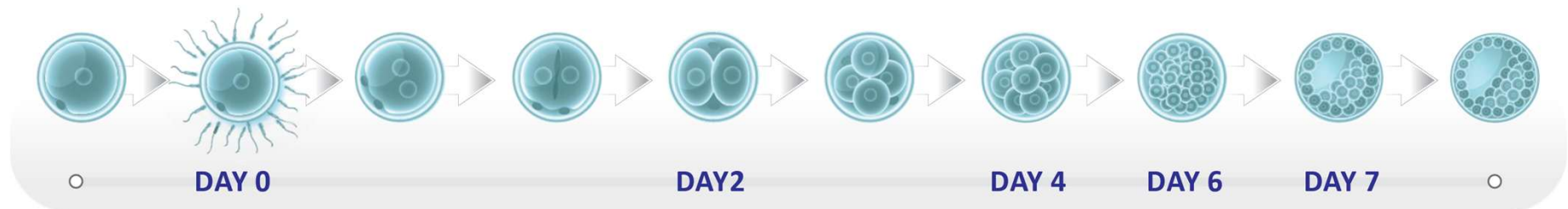


- ✓ Age
- ✓ Nutrition and water
- ✓ Previous 60 days
- ✓ Weather
- ✓ General Health
 - Body score
 - Vaccine

- ✓ Consumables
- ✓ SOP:
- ✓ Semen
 - Mating
 - Type of semen
 - Processing
- ✓ IVF media
 - Fert Standard
 - Fert Support

Partners & Customers Control

Embryo Production



Ovum Pick Up

We are collecting oocytes on day -1 in the IVF process. They will arrive at the lab on day 0.

Laboratory Fertilization

Once the eggs are back at our lab, they are carefully fertilized using chosen sires according to each customer's needs.



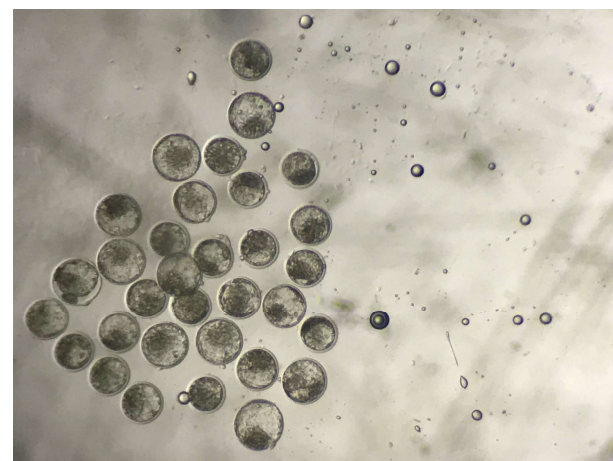
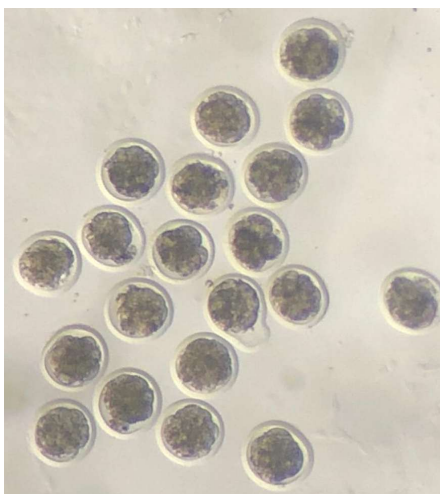
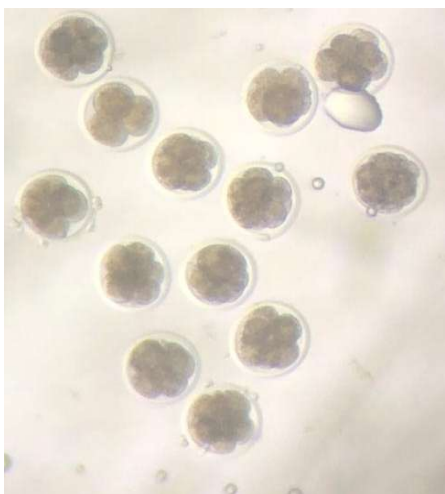
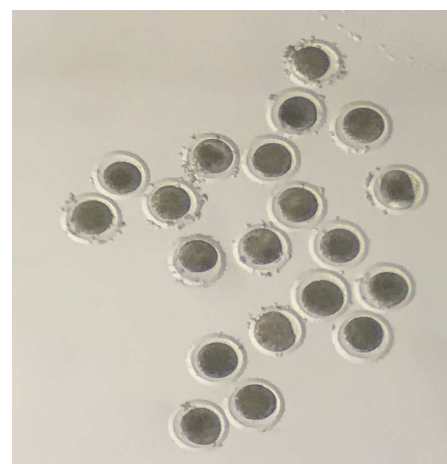
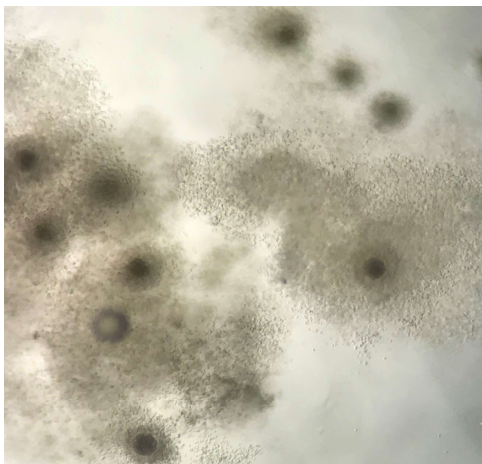
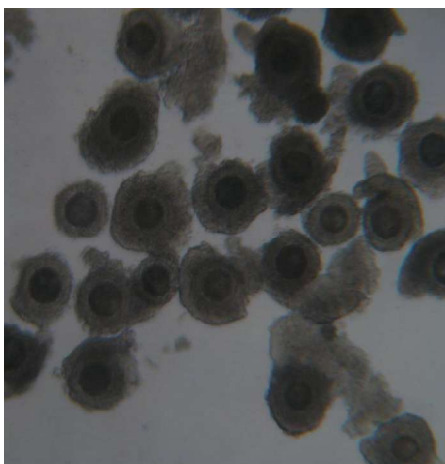
7-day process from egg to embryo



Fresh or frozen embryos based on customer's needs



What real structures looks like



The Game Changer = DT Frozen Embryos

Vytelle uses the Direct Thaw (DT) method—it's as simple as 1, 2, 3.



Easy Logistics

ACCESSIBLE



Trade Secret Media

RELIABLE



Demonstrated Results

PREDICTABLE

Recipient Selection & Management

- Selecting Recipients
 - Regular estrous cycles prior to synchronization.
 - Pre-breeding vaccinations 30 to 45 days prior to embryo transfer.
 - Positive plane of nutrition 30 days prior to and 45 days post embryo transfer.
 - Minimize transportation before and after embryo transfer to decrease stress.
- Synchronization & utilization
- Pregnancy Check



RECIPIENT COW SELECTION

Vytelle™

Tips to Selecting the BEST Recipient Cows

- 3 to 7 years of age or pubertal heifers
- 45 to 60 days postpartum
- Body condition score of 5.5 (beef) or 3 (dairy)
- Sound udder, feet and legs
- No prior calving difficulty
- Positive plane of nutrition & mineral program

Learn more at vytelle.com



The Vytelle Difference

- **Global Experience**
 - SOPS & Process
- **Data Insights**
 - On demand to inform mating decisions
- **Outcome based pricing**
 - Only pay for Grade One embryos produced
- **Hormone Free IVF**
 - No Donor Preparation required
 - Donors can be Pregnant or Empty
 - Donors stay in production
- **Vytelle's propriety media**
 - Cutting-edge in-house media
 - R&D focus
- **No Fetal Calf Serum**
 - Less chance of oversized calves
- **Accessible OPU options**
 - A location near you
- **Direct Thaw Frozen Embryos**
 - High success rates
 - Simple Logistics & Implant

Thank You

Dr Bruno Sanches, VP Vytelle ADVANCE Operations
Bruno.Sanches@vytelle.com

